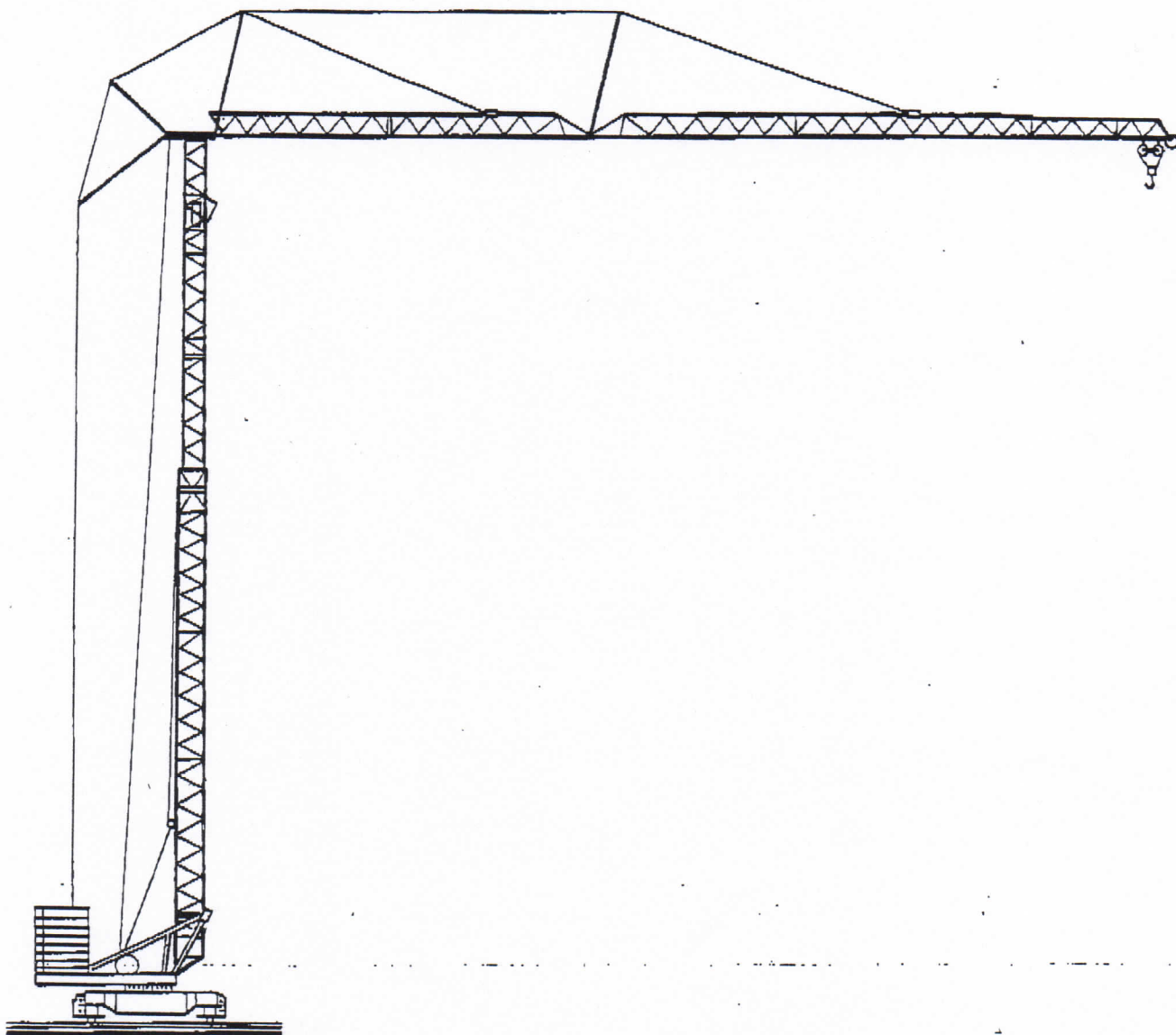


GMR 218B



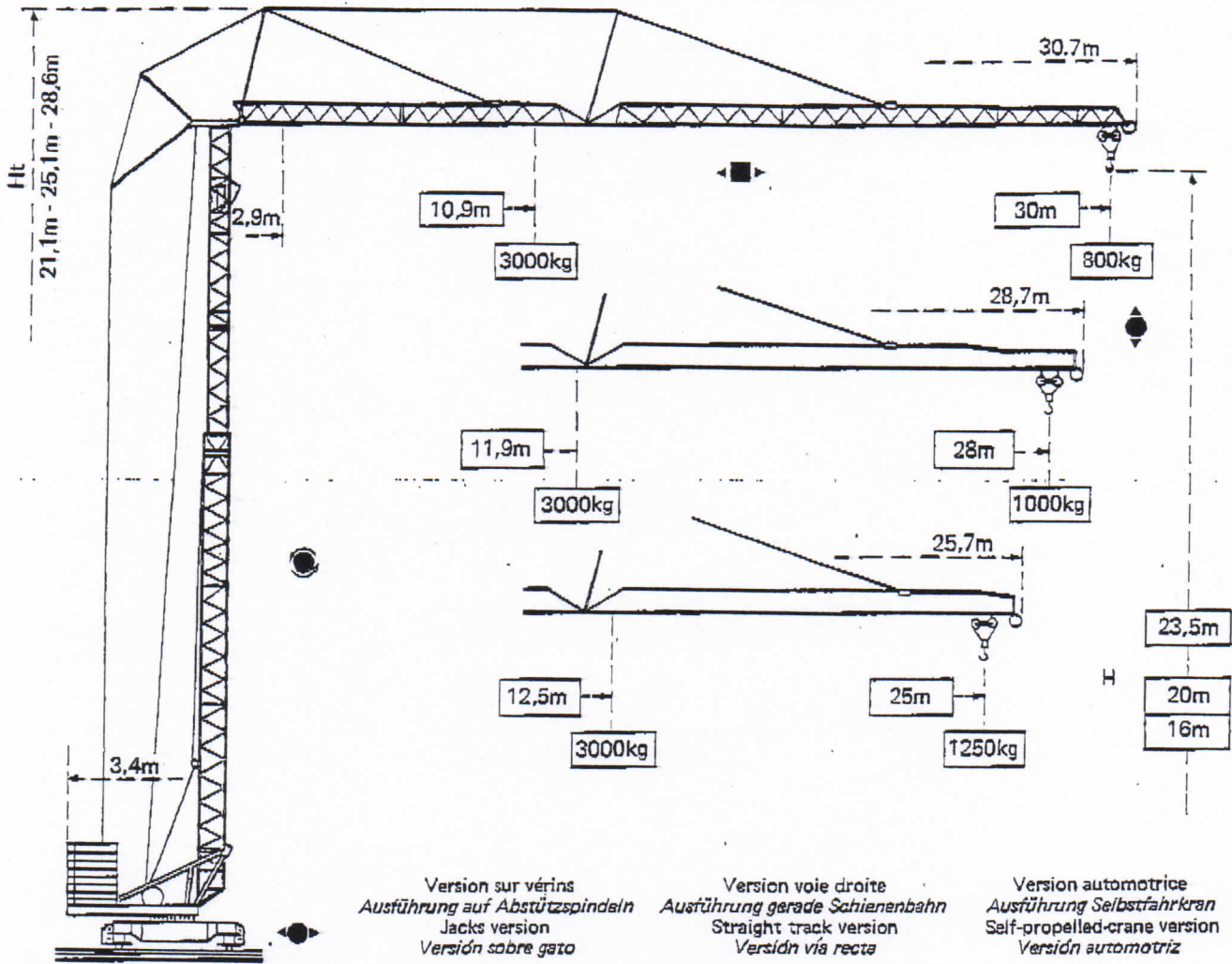
GMR 218B

Potain

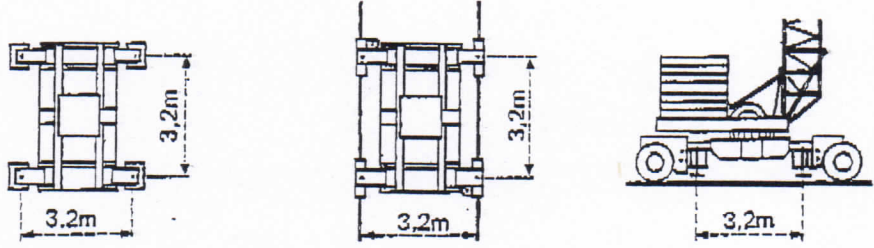


Potain GMR 218B

Cotes Abmessungen Dimensions Dimensiones



F1



F1 = Réactions Eckdrücke Reactions Reacciones

F1	● 184 kN	■ 123 kN
	12.3 t	

- En service
- Hors service

A vide sans lest ni train de transport, avec flèche et hauteur maximum.

- In Betrieb
- Ausser Betrieb

Ohne Last, Ballast und Transportachse, mit Maximalausleger und Maximalhöhe.

- In service
- Out of service

Without load, ballast or transport axles, with maximum jib and maximum height.

- En servicio
- Fuera de servicio

Sin carga, sin lastre, ni tren de transporte, flecha y altura maximas.

Courbes de charges Lastkurven Load curves Curvas de cargas

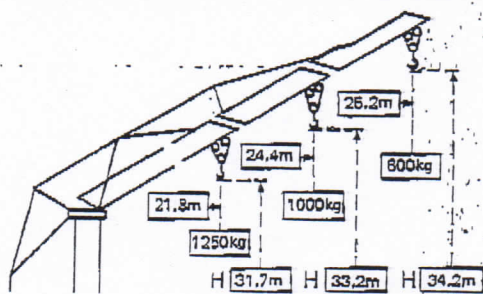


2,9	→	10,9	12	14	16	18	20	22	24	26	28	30	m
30m	⊗	3000	2670	2190	1850	1590	1390	1220	1090	980	880	800	kg

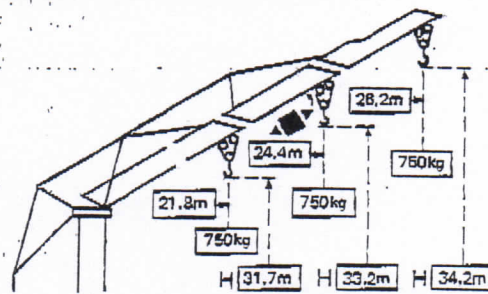
2,9	→	11,9	12	14	16	18	20	22	24	26	28	m
28m	⊗	3000	2970	2450	2070	1780	1560	1380	1230	1100	1000	kg

2,9	→	12,5	13	15	17	19	21	23	25	m
25m	⊗	3000	2860	2390	2040	1780	1570	1390	1250	kg

Flèche relevée Ausleger in Steilstellung Raised jib Flecha izada



Chariot bloqué (version standard)
 Verriegelte Laufkatze (Standardausführung)
 Trolley locked (standard crane)
 Carro bloqueado (versión standard)

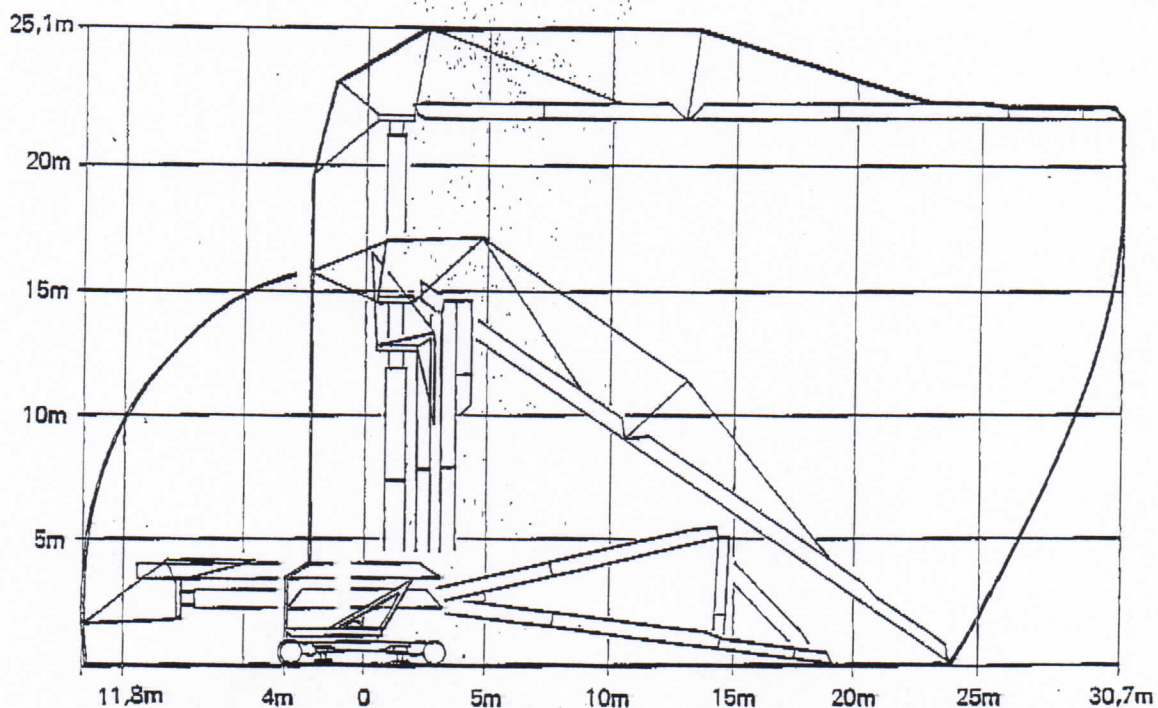


Chariot distributeur (option usine)
 Verfahrbare Laufkatze (Sonderausführung ab Werk)
 Traversing trolley (plant option)
 Carro distribuidor (opción de fábrica)












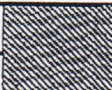

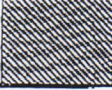



RC 31

37m/min
 ch-PS-hp
 3kW

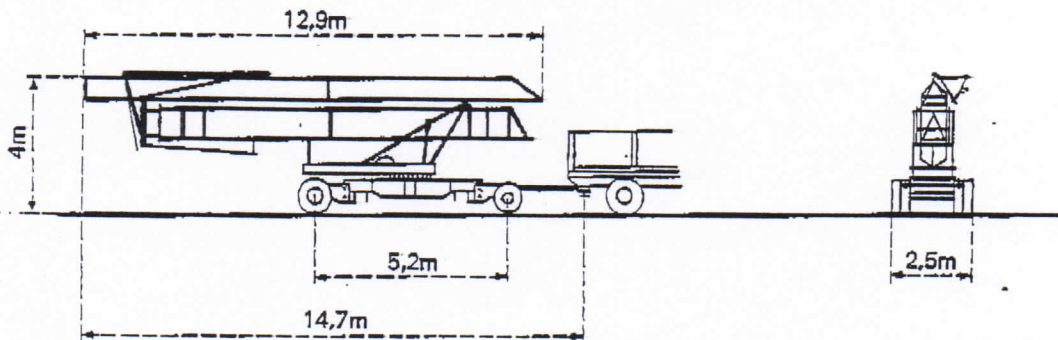
Montage Montage Erection Montaje



Mécanismes Antriebe Mechanisms Mecanismos

				m/min.	kg	ch-PS hp	kW
Levage Heben Hoisting Elevación	 PC15A 			6	1500	3,4	2,5
				25	1500	15	11
				50	1000		
				3	3000	3,4	2,5
				12,5	3000	15	11
				25	2000		
Distribution - <i>Katzfahren</i> Trolleying - <i>Distribución</i>		DV 31	31,8		4	2,9	
		2 D2 V2	14 - 42				
Orientation - <i>Schwenken</i> Slewing - <i>Orientación</i>		RCO 20	0,3 - 1 tr/min U/min-rpm		3	2,2	
Translation - <i>Kranfahren</i> Travelling - <i>Traslación</i>		TVD 323	31		2 x 3	2 x 2,2	
Puissance électrique nécessaire Anschlusswert Necessary electric power Potencia eléctrica necesaria		Réseau - <i>Netzstrom</i> - Mains supply - <i>Red</i>			20 kVA		
		Groupe électrogène - <i>Stromaggregat</i> Generator set - <i>Grupo electrogeno</i>			Nous consulter <i>Auf Anfrage</i> Consult us <i>Consultarnos</i>		

Transport Transport Transport Transporte



Version tractée derrière camion
 Ausführung als LKW-Anhänger
 Lorry towed version
 Versión remolcable detrás de un camión

DIN 15018 H1 B3

 **Potain**

18' de Charbonnières B.P 173 - F 69130 ECULLY
 Tél. 833.81.81 Télax 330 179
 EXPORT, 89 Av. du Pdt Roosevelt - CHEVILLY - LARUE
 F 94150 RUNGIS - Tél. (1) 687.22.23 - Télax 270001
 POTAIN GmbH - D 8082 MÖRFELDEN - WALLDORF
 Nordendstr. 79-87 - Postfach 420 - Tel. (6 105) 5091 - Telex 4 185745
 POTAIN SWISS - CH 5700 - IKEN WILDEGG
 Tel. 64.53.19.917

Modifications réservées. Änderungen vorbehalten. Subject to modification. Modificaciones reservadas.

Ref. 8036 EXZ 2

Printed in France