









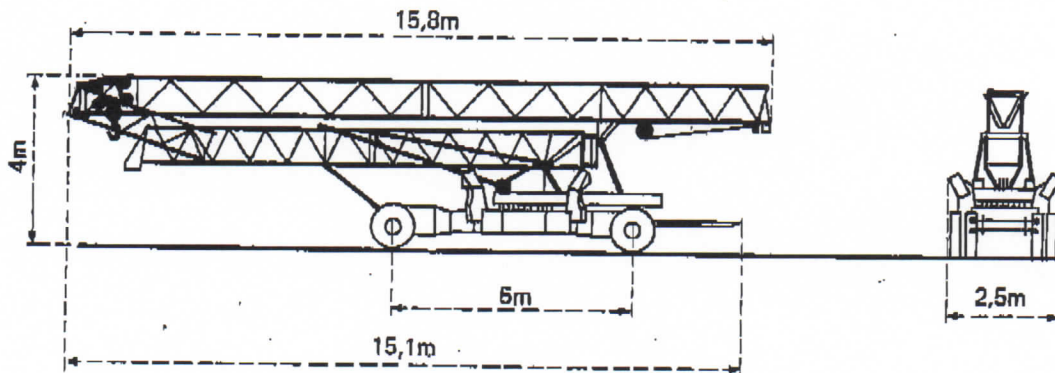
50Hz	60Hz	kg	m/mn	kW	380V-50Hz=20KVA	
15 TDPC10	1	bd	4	3.7	② = 2D1V2	
			8		35 m/mn	
	2	bd	3000	12.5	11	② = 2D2V2
			1500	25	11	RCV 20
	3	bd	2000	25	11	0 → 1 tr/mn
			1000	50		TVD 121
					25 m/mn	
					2 × 1kW	

SUBJECT TO MODIFICATIONS

Mécanismes Antriebe Méchanisms Mecanismos

			m/min.	kg	ch-PS hp	kW
Levage Heben Hoisting Elevación	 15TD PCB		5	3000	3,5	2,7
			22,5	3000	15	11
			45	1000		
Distribution - <i>Katzfahren</i> Trolleying - <i>Distribución</i>		6DV5	32		5,4	4
Orientation - <i>Schwenken</i> Slewing - <i>Orientación</i>		RCO 20	0,3-1 tr/min U/min-rpm		3	2,2
Translation - <i>Kranfahren</i> Travelling - <i>Traslación</i>		TVD 123	25		2 x 3,5	2 x 2,6
Puissance électrique nécessaire Anschlusswert Necessary electric power Potencia eléctrica necesaria	380 V 60 HZ 	Réseau - <i>Netzstrom</i> Mains supply - <i>Red</i>		20 kVA		
		Groupe électrogène Stromaggregat Generator set Grupo electrogeno		Nous consulter Auf Anfrage Consult us Consultarnos		

Transport Transport Transporte



Version tractée derrière camion
 Ausführung als LKW-Anhänger
 Lorry towed version
 Versión remolcable detrás de un camión

DIN 15018 H1 B3

POTAIN 

18, rue de Charbonnières B.P 173 - 69132 ECULLY Cedex
 Tél. (7) 833.81.81 - Télex 330 179
 DIRECTION DES ACTIVITES INTERNATIONALES
 207, rue de Bercy - 75012 PARIS
 Tél. (1) 347.30.77 - Télex 215 483
 POTAIN GmbH - D 6082 MÖRFELDEN - WALLDORF
 Nordendstr. 79-87 - Postfach 420 - Tel. (19.49) 6105 704.0 - Telex 4.185746
 POTAIN SUISSE S.A. - CH 6115 MÖRIKEN WILDEGG
 Tel. 84.53.19.91 - Telex 88294

Ref. 8244 HAJ 1

Modifications réservées - Änderungen vorbehalten - Subject to modification - Modificaciones reservadas

Printed in France