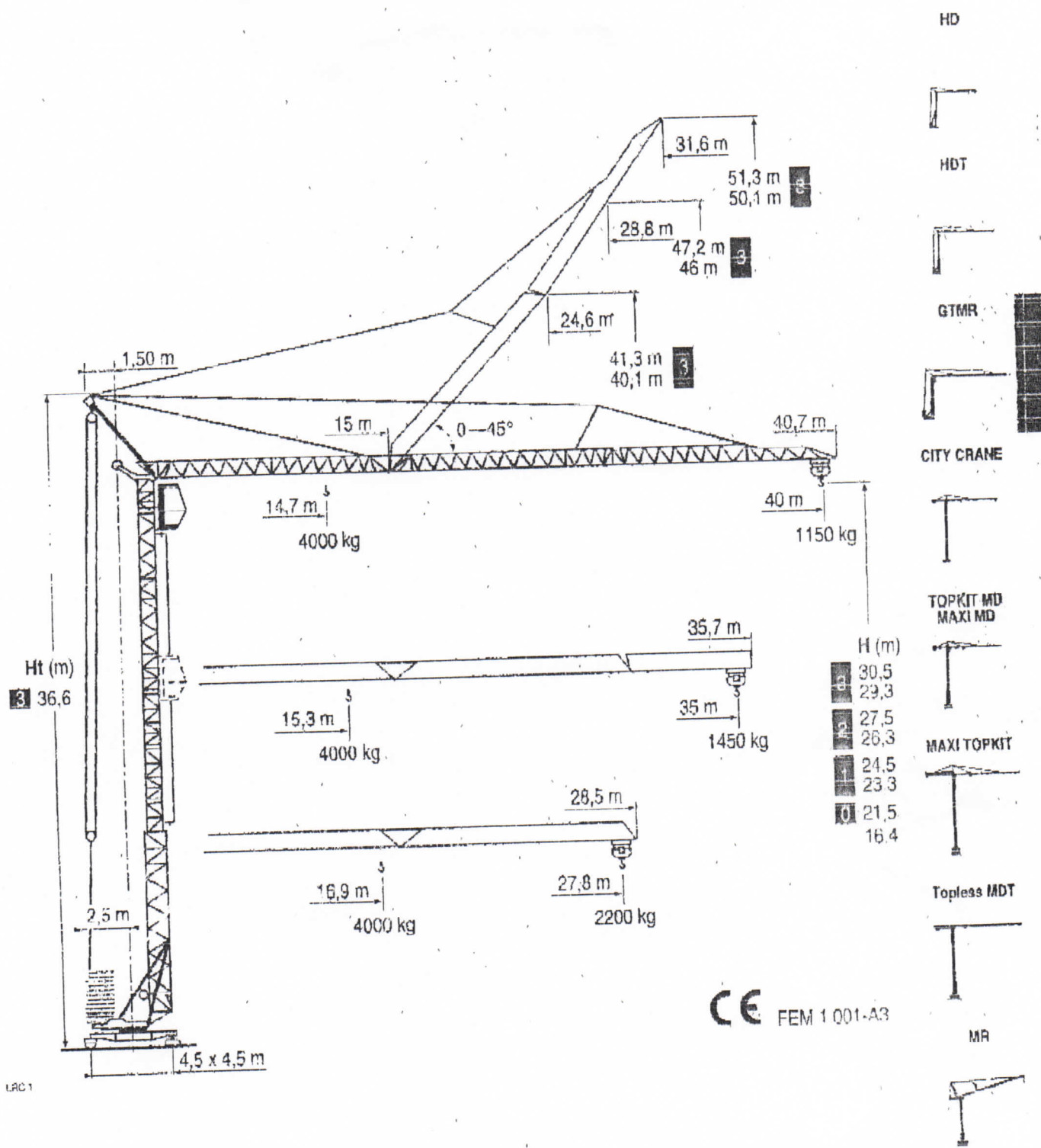


# GTMR 336 B

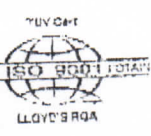


Ht (m)  
3 36.6

H (m)
3 30.5
2 29.3
2 27.5
1 26.3
1 24.5
0 23.3
0 21.5
0 16.4

CE FEM 1 001-A3

LAC1



# POTAIN

**Lastkurven**

**Curvas de cargas**

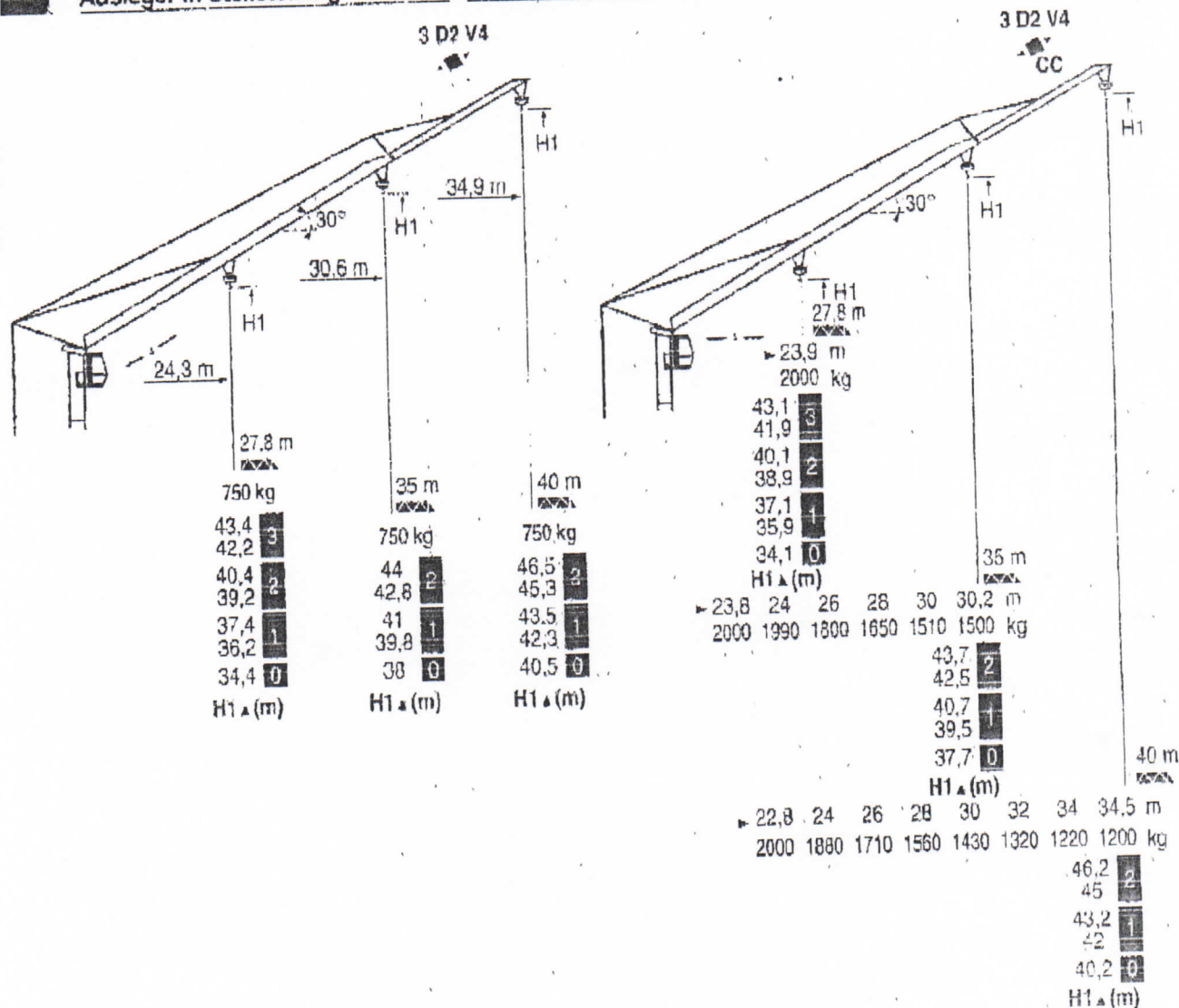
**负荷曲线**

40 m	2,8	14,7	16	18	20	22	24	26	26,3	28	30	32	34	36	38	40 m	
		4000	3600	3110	2740	2440	2190	1980	-	1810	1660	1530	1420	1320	1230	1150 kg	
										2000	1860	1710	1580	1470	1370	1280	1200 kg
35 m	2,8	15,3	16	18	20	22	24	26	27,6	28	30	32	34	35 m			
		4000	3800	3290	2890	2570	2310	2100	-	1920	1760	1620	1500	1450 kg			
										2000	1970	1810	1670	1550	1500 kg		
27,8 m	2,8	16,9	18	20	22	24	26	27,8 m									
		4000	3720	3270	2920	2630	2390	2200 kg									
								2000 kg									

**Flèche relevée**  
**Ausleger in Steilstellung**

**Luffing jib**  
**Flecha izada**

**Braccio impennato**  
**起升吊臂**



LRC 1

Chariot distributeur  
Chariot distributeur  
e: courbes de charges

Verfahrbare Laufkatze  
Verfahrbare Laufkatze  
und Lastkurven

Traversing trolley  
Traversing trolley  
and load diagrams

Carro distribuidor  
Carro distribuidor  
y curvas de cargas

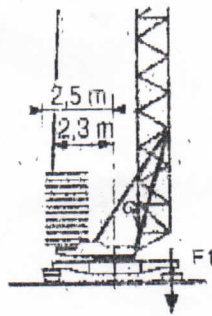
Carrellino distributore  
Carrellino distributore  
e curve di carico

变幅小车  
变幅滑车和  
负荷曲线

**Eckdrücke**

**Reacciones**

**反力**



F1 ●26,4 t ■ 21 t

▲ 15,2 t

LAC 1

● Réactions en service	● Reactions in service	● Reazioni in servizio
■ Réactions hors service	■ Reactions out of service	■ Reazioni fuori servizio
▲ A vide sans lest (ni train de transport) avec flèche et hauteur maximum.	▲ Without load, ballast (or transport axes), with maximum jib and maximum height.	▲ A vuoto, senza zavorra (né assali di trasporto) con braccio massimo e altezza massima.
● Reaktionskräfte in Betrieb	● Reacciones en servicio	● 工作状态下的反应
■ Reaktionskräfte außer Betrieb	■ Reacciones fuera de servicio	■ 非工作状态下的反应
▲ Ohne Last, Ballast (und Transportachse), mit Maximalausleger und Maximalhöhe.	▲ Sin carga, sin lastre, (ni tren de transporte), flecha y altura máxima.	▲ 空载无压重也无运输车有吊臂和最大高度

**Mécanismes  
Antriebe**

**Mechanisms  
Mecanismos**

**Meccanismi  
机构**

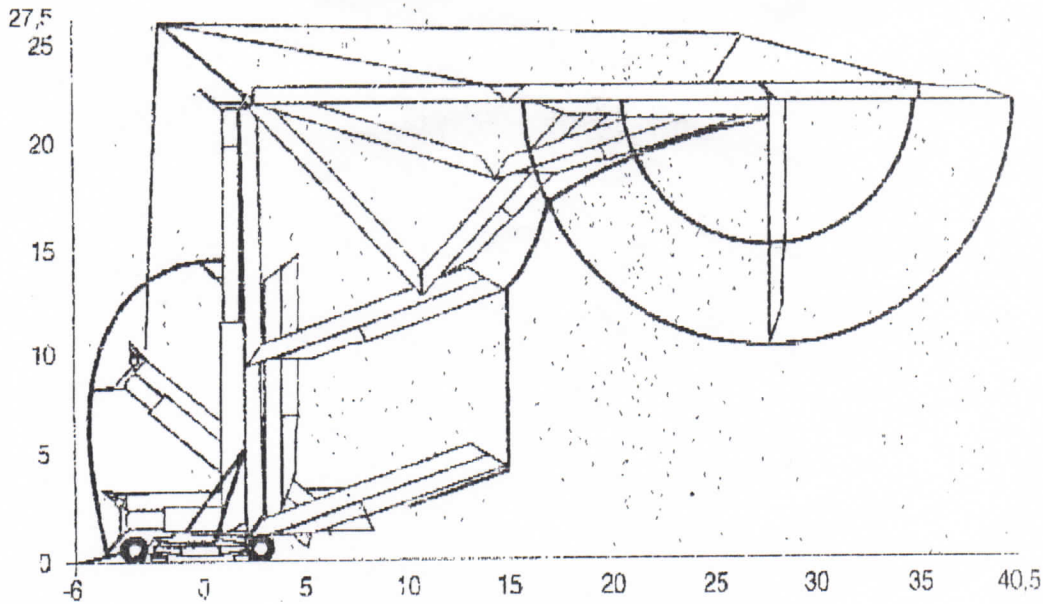
								ch - PS hp	kW	
▲	20 TDPC 10	m/min	8	25	50	4	12,5	25	20	15
		kg	2000	2000	1300	4000	4000	2600		
▲	20 LVF 10	m/min	5	25	50	2,5	12,5	25	20	15
		kg	2000	2000	1300	4000	4000	2600		
◀ ▶	3 D2 V4	m/min	22 - 44						4	3
⊙	RCV 32	tr/min U/min rpm	0 → 0,8						4	3
	TVD 122	m/min	25						2 x 2	2 x 1,5
 R ≥ 8 m	TB 122	m/min	25						2 x 2	2 x 1,5
CEI 38	IEC 38	KVA						84/534 - 87/405		
400 V (+6% -10%) 50 Hz		25 KVA								

LAC 1

● Levage	● Hoisting	● Sollevamento
■ Distribution	■ Trolleying	■ Distribuzione
⊙ Orientation	⊙ Slewing	⊙ Rotazione
● Translation	● Travelling	● Traslazione
Conforme aux directives CEE 84/534 et 87/405 sur le niveau acoustique	In compliance with the EEC 84/534 and 87/405 instructions on noise level	Conforme alle direttive CEE 84/534 e 87/405 sul livello acustico
● Heben	● Elevación	● 起升
■ Katzfahren	■ Distribución	■ 变幅
⊙ Schwenken	⊙ Orientación	⊙ 回转
● Kranfahren	● Traslación	● 行走
Gemäss EWG-Richtlinien 84/534 und 87/405 für den Schall-Leistungspegel	Conforme con las directivas CEE 84/534 y 87/405 sobre el nivel acustico	符合 CEE 84/534 - CEE 87/405 声功率级规定

**GTMR 336 B**

**POTAIN**



LRC 1

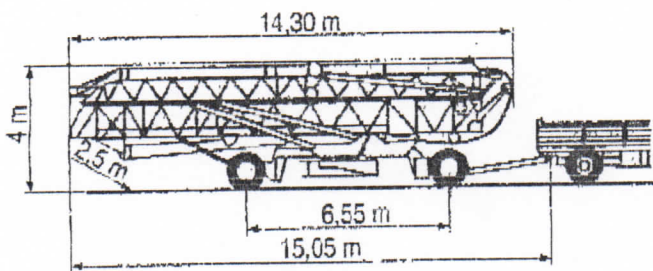
Transport  
Transport



Transport  
Transporte

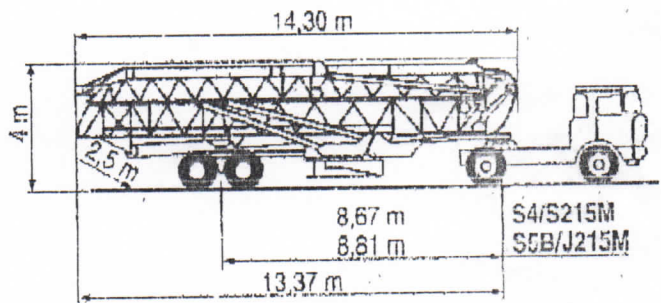


Trasporto  
运输



15A/25A

DJ126M/S215M CJ125M/J215M



S4/S215M

S5B/J215M

LRC 1

# POTAIN

GRUPE EGRIS INDUSTRIES

18 Rue de Charbonnières, B.P. 173  
 F-69182 ECULLY Cedex  
 Tél. (33)04.72.18.20.20  
 Fax (33)04.72.18.20.00  
 http://www.potain.com  
 E-mail: markt@potain.fr

## GTMR 336 B

Copyright/Reproduction interdite © POTAIN 1999

Deutschland  
 POTAIN GmbH Tel: 06 105.704.0

Italia  
 POTAIN S.p.A Tel: 039 65.631

Singapore  
 POTAIN PTE LTD Tel: (00.65) 227.1550

Réf. 1999.04 LRC 1

Modifications réservées. Subject to modification. Änderungen vorbehalten. Modificaciones reservadas. 04/99

Printed in France

Réalisation SCD-PE