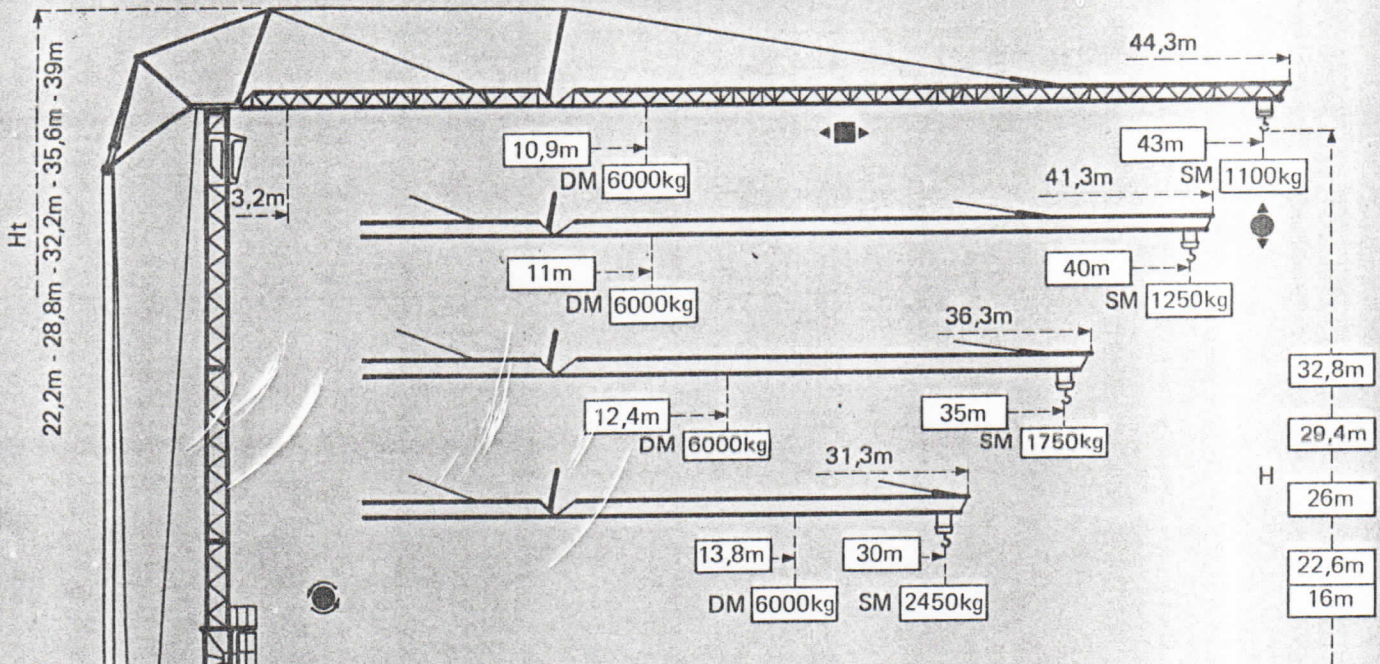


**GTMR 350B**

**POTAIN** 

# POTAIN GTMR 350B

Cotes Abmessungen Dimensions Dimensiones

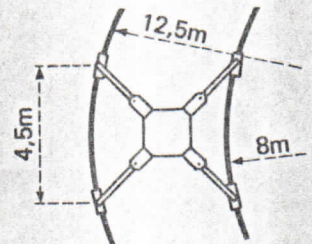
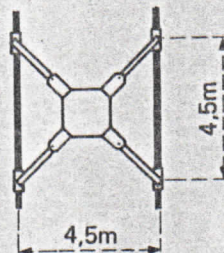
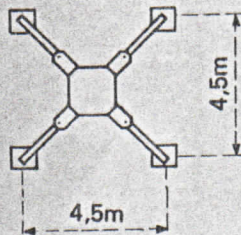


Version sur vérins  
 Ausführung auf Abstützspindeln  
 Jacks version  
 Versión sobre gatos

Version voie droite  
 Ausführung gerade Schienenbahn  
 Straight track version  
 Versión vía recta

Version voie courbe  
 Ausführung Kurvengleis  
 Curved track version  
 Versión vía curva

F1



F1= Réactions Eckdrücke Reacciones Reacciones

F1	● 302 kN	■ 253 kN
	24,9 t	

- En service
- Hors service

A vide sans lest ni train de transport, avec flèche et hauteur maximum.

- In Betrieb
- Ausser Betrieb

Ohne Last, Ballast und Transportachse, mit Maximalausleger und Maximalhöhe.

- In service
- Out of service

Without load, ballast or transport axles, with maximum jib and maximum height.

- En servicio
- Fuera de servicio

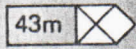
Sin carga, sin lastre, ni tren de transporte, flecha y altura maximas.

# Courbes de charges Lastkurven Load curves Curvas de cargas



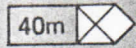
Flèche Ausleger Jib Flecha

3,2	→	10,9	11	13	15	17	19	21	23	25	27	29	31	33	35	37	39	41	43	m
W/W		6000	5890	4710	3890	3290	2840	2480	2190	1950	1750	1580	1430	1300	1190	1090	1000	920	850	kg



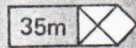
43m	→	19,7	21	23	25	27	29	31	33	35	37	39	41	43	m
W/W		3000	2770	2470	2230	2020	1850	1690	1560	1450	1350	1260	1170	1100	kg

3,2	→	11	13	15	17	19	21	23	25	27	29	31	33	35	37	39	40	m
W/W		6000	4850	4010	3390	2930	2560	2260	2020	1810	1630	1480	1350	1240	1130	1040	1000	kg



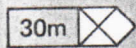
40m	→	20	21	23	25	27	29	31	33	35	37	39	40	m
W/W		3000	2840	2540	2290	2080	1900	1740	1610	1490	1390	1290	1250	kg

3,2	→	12,4	13	15	17	19	21	23	25	27	29	31	33	35	m
W/W		6000	5650	4680	3980	3440	3020	2680	2400	2160	1960	1780	1630	1500	kg



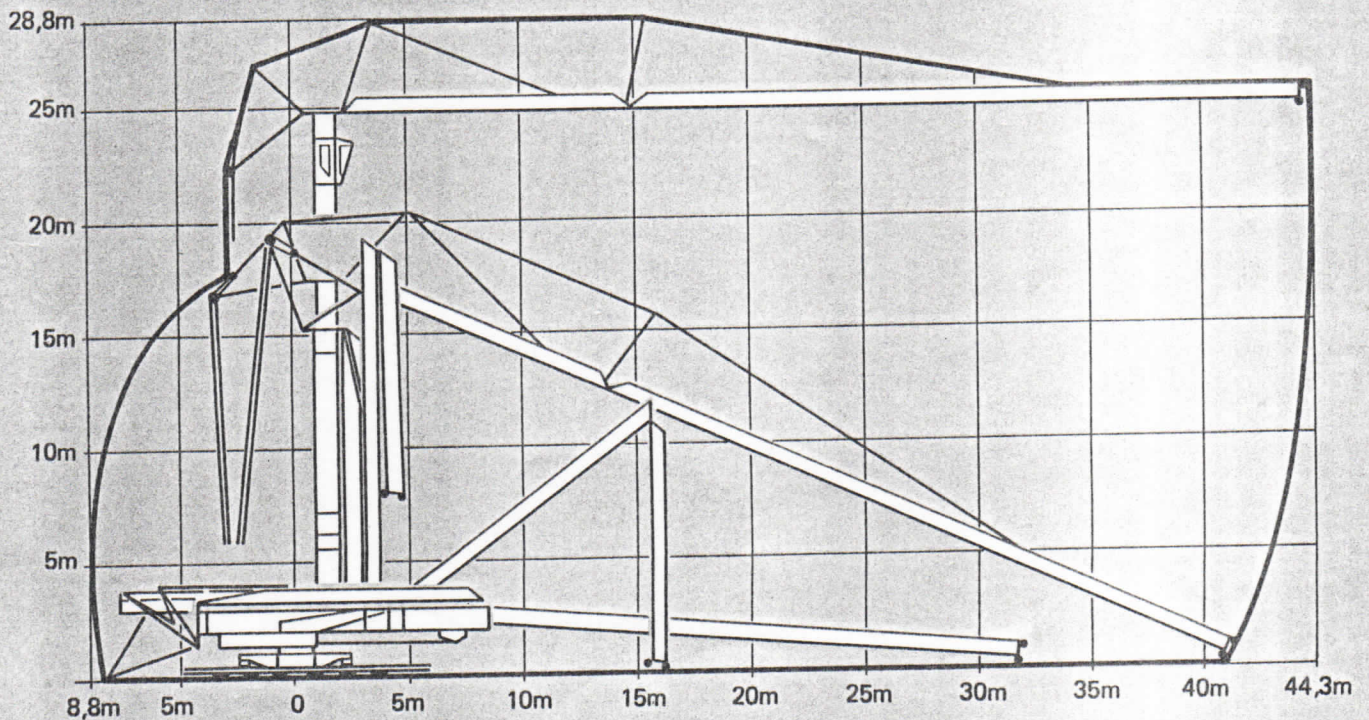
35m	→	22,6	23	25	27	29	31	33	35	m
W/W		3000	2950	2660	2420	2210	2040	1890	1750	kg

3,2	→	13,8	15	17	19	21	23	25	27	29	30	m
W/W		6000	5400	4600	3990	3510	3120	2800	2530	2300	2200	kg
















30m	→	25,4	27	29	30	m
W/W		3000	2790	2550	2450	kg

## Montage Montage Erection Montaje

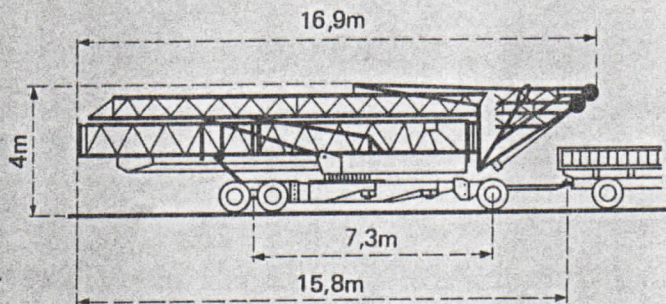


Mécanismes Antriebe Mechanisms Mecanismos

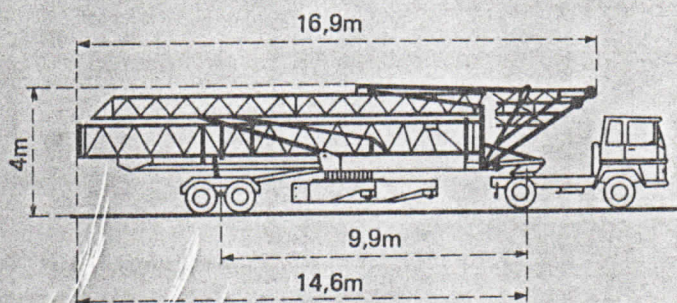
				m/min	kg	ch-PS hp	kW
Levage Heben Hoisting Elevación	25PC15 			5,5	3000	4,5	3,3
				30	3000	25	18
				60	1500		
				2,7	6000	4,5	3,3
				15	6000	25	18
				30	3000		
Distribution - Katzfahren Trolleying - Distribución		RCC 52	15 30 45		6,5	4,8	
Orientation - Schwenken Slewing - Orientación		RCO 51	0,14-0,4-0,9 tr/min U/min-rpm		6,5	4,8	
Translation - Kranfahren Travelling - Traslación		TVD 323	30		2x3	2x2,2	
		RT 123 C1			2x3	2x2,2	
Puissance électrique nécessaire Anschlusswert Necessary electric power Potencia eléctrica necesaria	380 V 50 HZ 	Réseau - Netzstrom - Mains supply - Red				40 kVA	
		Groupe électrogène - Stromaggregat Generator set - Grupo electrógeno				Nous consulter Auf Anfrage Consult us Consultarnos	

Transport Transport Transport Transporte

Version tractée derrière camion  
 Ausführung als LKW-Anhänger  
 Lorry towed version  
 Versión remolcable detrás de un camión



Version semi-portée  
 Ausführung als Sattelaufliager  
 Tractor towed version  
 Versión en semi-remolque



DIN 15018 H1 B3

Modifications réservées - Änderungen vorbehalten - Subject to modification - Modificaciones reservadas

Printed in France

# POTAIN

18, rue de Charbonnières B.P 173 - F 69130 ECULLY  
 Tél. (7) 833.81.81 - Télax 330 179  
 EXPORT 207, rue de Bercy - Tour MATTEI - 75012 PARIS  
 Tél. (1) 347.30.77 - Télax 215 483  
 POTAIN GmbH - D 6082 MÖRFELDEN - WALLDORF  
 Nordendstr. 79-87 - Postfach 420 - Tel. (6 105) 5091 - Telex 4 185745  
 POTAIN SUISSE S.A. - CH 5115 MÖRIKEN WILDEGG  
 Tel. 64.53.19.91 - Telex 68294

Réf. 8152 HCQ 2