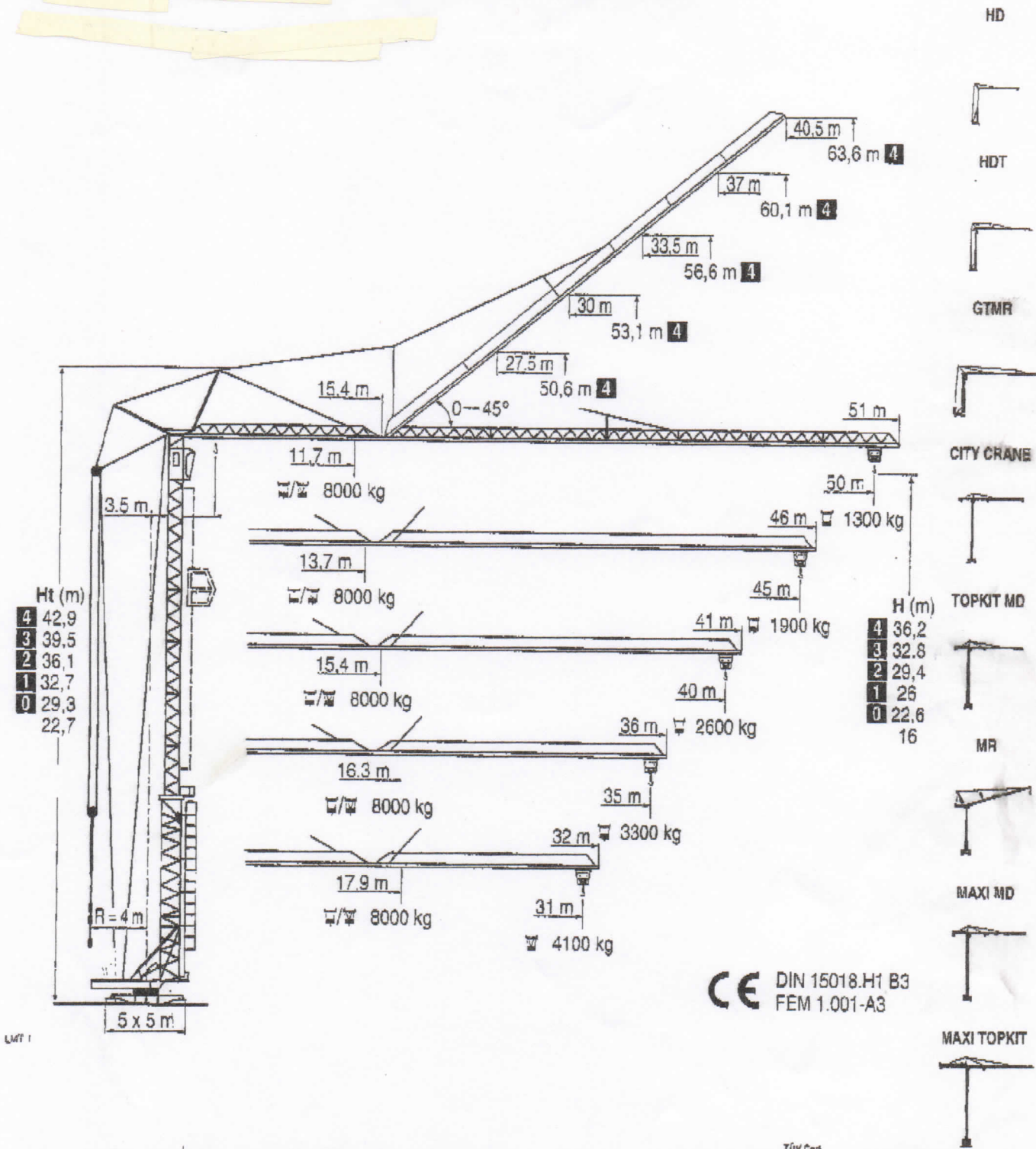
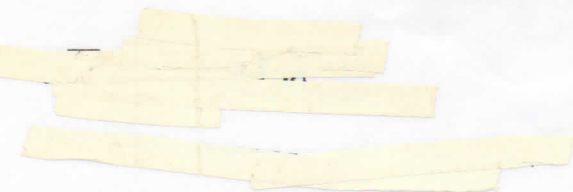
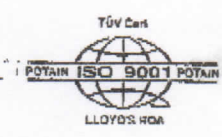


# GTMR 386 A



- HD
- HDT
- GTMR
- CITY CRANE
- TOPKIT MD
- MR
- MAXI MD
- MAXI TOPKIT

**CE** DIN 15018.H1 B3  
FEM 1.001-A3



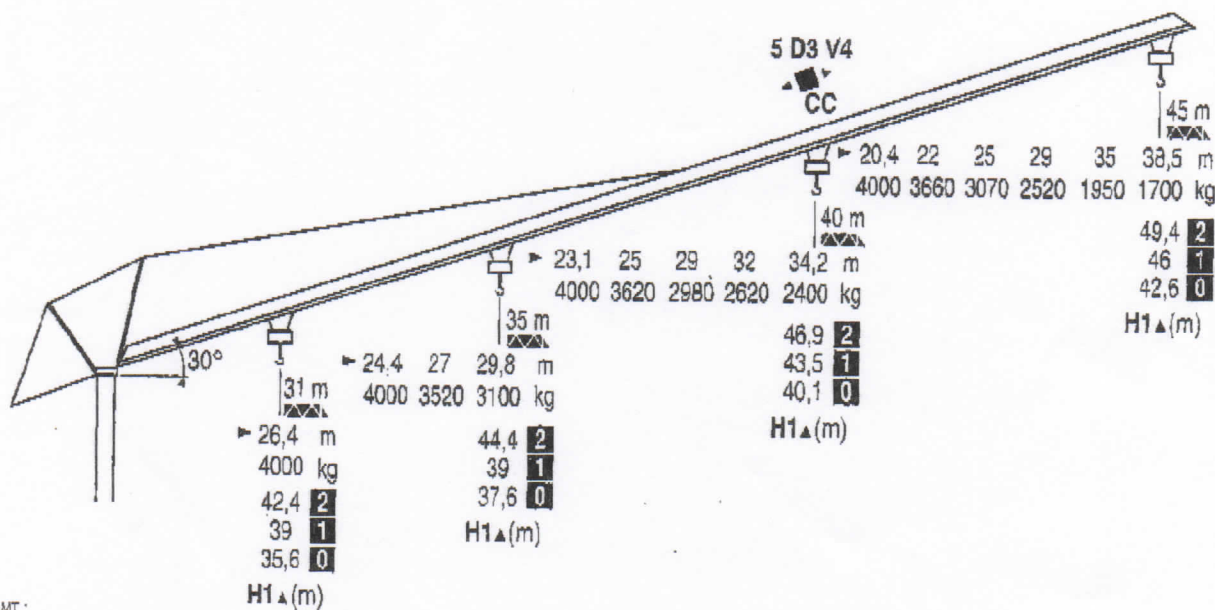
# POTAIN

50 m	3,5	▶	11,7	15	17	19	20,8	21	23	25	27	29	31	33	35	37	38	40	42	45	48	50 m
▴/▾			8000	5780	4920	4260	-	3740	3300	2980	2690	2440	2230	2050	1890	1740	1680	1550	1450	1300	1180	1100 kg
□								4000	3940	3530	3180	2890	2640	2430	2250	2090	1940	1880	1750	1650	1500	1380 1300 kg
45 m	3,5	▶	13,7	17	19	21	23	24,6	25	27	29	31	33	35	37	38	40	42	45 m			
▴/▾			8000	6070	5280	4650	4150	-	3730	3380	3080	2830	2600	2410	2230	2150	2010	1880	1700 kg			
□									4000	-	3580	3280	3030	2800	2610	2430	2350	2210	2080	1900 kg		
40 m	3,5	▶	15,4	17	19	21	23	25	27	28	29	31	33	35	37	40 m						
▴/▾			8000	7070	6160	5440	4860	4380	3980	-	3640	3340	3090	2860	2660	2440 kg						
□											4000	-	3540	3290	3060	2860	2600 kg					
35 m	3,5	▶	16,3	19	21	23	25	27	29	29,8	31	33	35 m									
▴/▾			8000	6630	5860	5240	4730	4300	3930	-	3620	3340	3100 kg									
□											4000	3820	3540	3300 kg								
31 m	3,5	▶	17,9	19	21	23	25	27	29	31 m												
▴/▾			8000	7460	6600	5910	5340	4860	4450	4100 kg												
□											4000 kg											

Flèche relevée  
Ausleger in Steilstellung

Luffing jib  
Flеча изадa

Braccio impennato  
起升吊臂



CC Chariot distributeur et courbes de charges

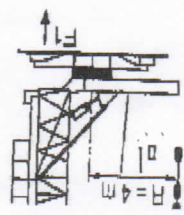
Traversing trolley and load diagrams

Carrellino distributore e curve di carico

CC Verfahrbare Laufkatze und Lastkurven

Carro distribuidor y curvas de cargas

变副滑车和负荷曲线



F1 • 45t • 38t  
 ▲ 31t

LMT 1

Reactions en service  
 Reactions hors service  
 A vide sans lest ni train de transport  
 avec flèche et hauteur maximum

Reaktionsskätte in Betrieb  
 Reaktionsskätte außer Betrieb  
 Ohne Last, Ballast und Transportachse,  
 mit Maximalausleger und Maximalhöhe.

Reactions in service  
 Reactions out of service  
 Without load, ballast or transport axles,  
 with maximum jib and maximum height.

Reacciones en servicio  
 Reacciones fuera de servicio  
 Sin carga, sin lastre, ni tren de  
 transporte, flecha y altura máxima.

Reazioni in servizio  
 Reazioni fuori servizio  
 A vuoto, senza zavorra ne assali di trasporto  
 con braccio massimo e altezza massima

工作状态下的反应  
 非工作状态下的反应  
 空载无压重也无运输车  
 有吊臂和最大高度

Mécanismes Antriebe Mechanisms Meccanismi 机构

CEI 38		IEC 38		400 V (+6% -10%) 50 Hz		50 kVA		84/534 - 87/405	
R ≥ 8 m H ≥ 32,8 m	m/min	RCV 62	rpm	0 → 0,8		25		2 x 4	2 x 3
				15 - 30 - 58				8	5,9
5 D3 V4	m/min	RCV 62	rpm	15 - 30 - 58		25		5,5	4
								33	24
33 LVF 20	kg	33 LVF 20	m/min	4000	4000	4000	4000	33	24
				5,4	31	62	2,7	15,5	31
33 PC 20	kg	33 PC 20	m/min	4000	4000	4000	4000	33	24
				5,4	30	60	2,7	15	30
ch - PS		KW		hp		KW		hp	

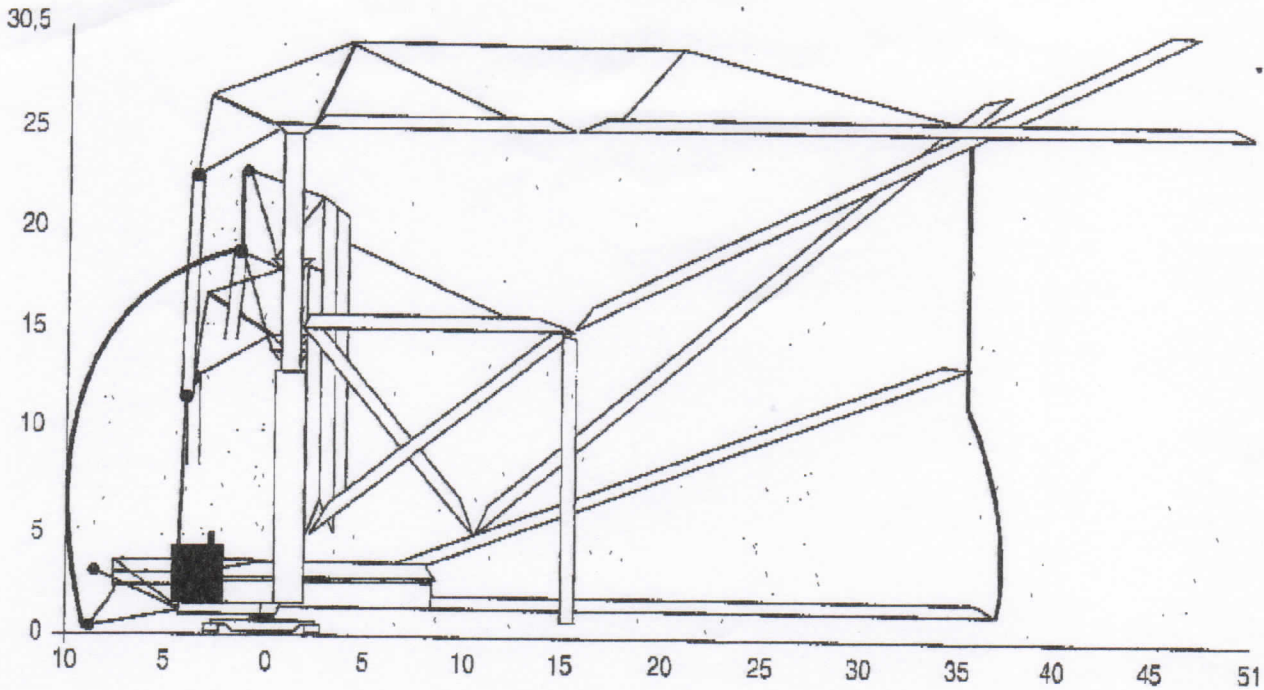
Levage Distribution Orientation Translation Conforms aux directives CEE 84/534 et 87/405 sur le niveau acoustique Gemäss EVG-Richtlinien 84/534 und 87/405 Ur den Schall-Leistungspegel

Hoisting Trolleying Slewing Travelling In compliance with the EEC 84/534 and 87/405 Instructions on noise level

Sollivamento Distribuzione Rotazione Traslazione Conforms alla direttive CEE 84/534 e 87/405 sul livello acustico

Elevacion Distribucion Orientacion Traslacion Conforme con las directivas CEE 84/534 y 87/405 sobre el nivel acustico

POTAIN



LMT 1

Transport  
Version semi-portée

Transport  
Ausführung als Sattelaufleger

Transport  
Tractor towed version

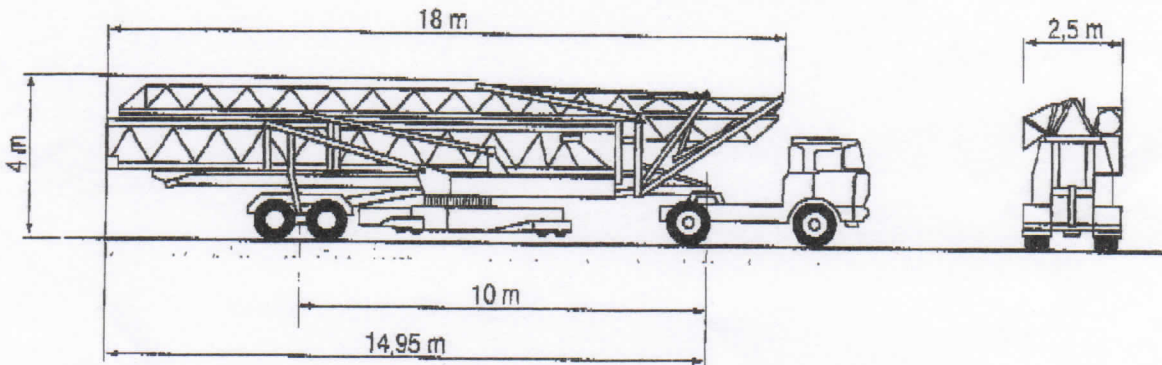
Transporte  
Versión en semi-remolque

Trasporto  
Versione semi rimorchio

运输  
半拖挂

S4/S215M

S5B/J215M



LMT 1

**POTAIN**

GRUPE LEGRIS INDUSTRIES

18, Rue de Charbonnières, B.P. 173-F  
89132 ECULLY Cedex  
Tél. (33)04.72.20.20.20  
Fax (33)04.72.20.20.00  
<http://www.potain.fr>  
E-mail . mkt@potain.fr

GTMR 386 A

Copyright.Reproduction interdite © FOTAIN 1997

Deutschland  
POTAIN GmbH Tel. 06.105.704.0  
Italia  
POTAIN S.p.A. Tel : 038.65.331  
China  
Zhangjiagang POTAIN Tel: 520. 877.1451

Réf. 1997.44 LMT 1

Modificazioni riservate / Modifications réservées / Änderungen vorbehalten / Subject to modification / 修改权保留

Printed in France

Réalisation SCHIPE