

CITY CRANE D12-10A DIN



Mats - Maste - Masts - Mástil - Torre



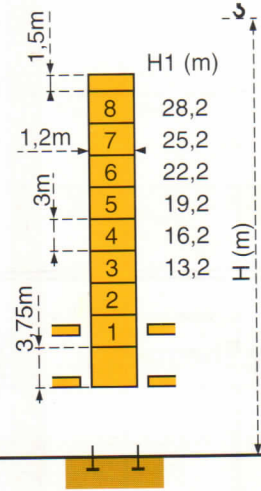
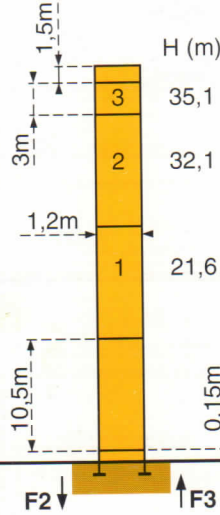
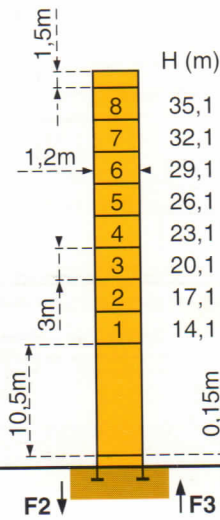
□ 1,2m

Flèche - Ausleger - Jib
 Flecha - Braccio
 25m → 43m

PA 264

PA 275

BA 25A



F2	● 54t	■ 67t
F3	● 40t	■ 53t

F2	● 54t	■ 67t
F3	● 40t	■ 53t

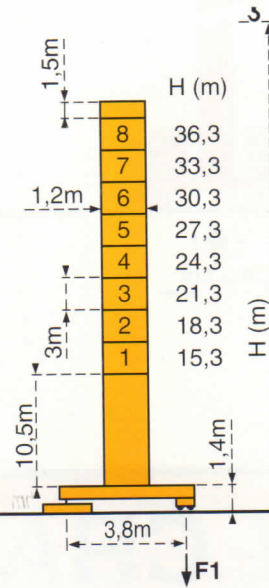
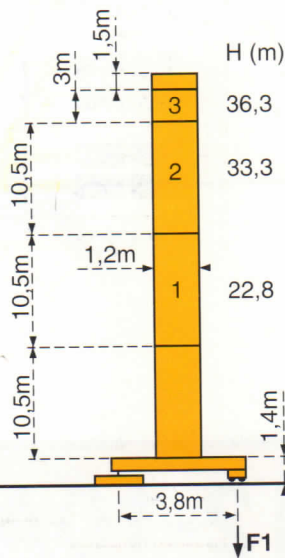
Voir ci-contre
 Siehe nebenstehend
 See opposite
 Ver pagina opuesta
 Vedi pagina accanto

⊕	19,5t
---	-------

⊕	19,5t
---	-------

ZF 275

ZF 264



F1	● 37t	■ 41t
----	-------	-------

F1	● 37t	■ 41t
----	-------	-------

⊕	25t
---	-----

⊕	25t
---	-----

F = Réactions - Eckdrücke - Reactions - Reacciones - Reazioni

Courbes de charges - Lastkurven - Load diagrams - Curvas de cargas - Curve di carico

 Flèche Ausleger Jib Flecha Braccio

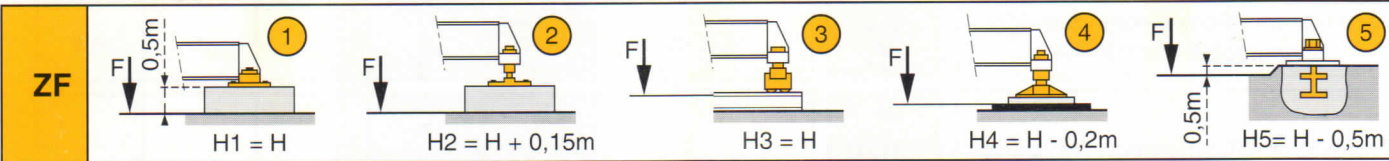
43 m	19,9	22	25	27	30	32	35	37	40	41	43	m
	2,5	2,22	1,9	1,73	1,52	1,4	1,25	1,16	1,04	1,01	0,95	t

40 m	20,6	22	25	27	30	32	35	37	40	m
	2,5	2,31	1,98	1,81	1,59	1,46	1,31	1,21	1,1	t

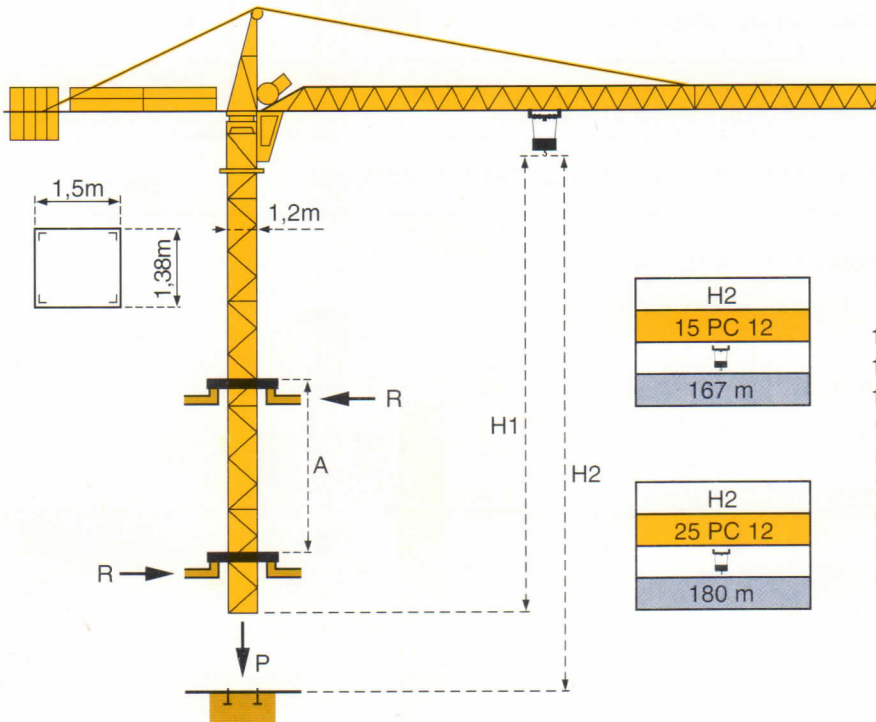
35 m	21,7	25	27	30	32	35	m
	2,5	2,11	1,92	1,69	1,56	1,4	t

30 m	22,7	25	27	30	m
	2,5	2,24	2,04	1,8	t

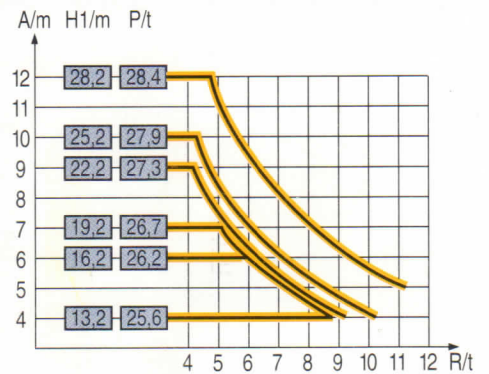
25 m	22,8	25	m
	2,5	2,25	t



**Télescopage sur dalles - Kletterkrane im Gebäude - Climbing crane
Telescopage gruas trepadoras - Gru in cavedio**

















BA 25A



A Distance entre cadres	A Abstand zwischen den Rahmen	A Distance between collars	A Distancia entra marcos	A Distanza fra i telai
H1 Hauteur grue	H1 Kranhöhe	H1 Crane height	H1 Altura grúa	H1 Altezza gru
P Poids de la grue (en service)	P Krangewicht (in Betrieb)	P Crane weight (in service)	P Peso de la grúa (en servicio)	P Peso della gru (in servizio)
R Réaction horizontale	R Horizontalkräfte	R Horizontal reaction	R Reaccion horizontal	R Reazione orizzontale

● En service	● In Betrieb	● In service	● En servicio	● In servizio
■ Hors service	■ Ausser Betrieb	■ Out of service	■ Fuera de servicio	■ Fuori servizio
⊗ A vide sans lest avec flèche et hauteur maximum.	⊗ Ohne Last und Ballast mit Maximalausleger und Maximalhöhe.	⊗ Without load and ballast with longest jib and maximum height.	⊗ Sin carga, sin lastre con flecha y altura máximas.	⊗ A vuoto senza zavorra e con braccio massimo e altezza massima.

Mécanismes - Antriebe - Mechanisms - Mecanismos - Meccanismi

					m/min	t		ch -PS hp	kW
Levage Heben Hoisting Elevación Sollevamento	15 PC 12 			7	2,5	335 m		15	11
				21	2,5				
				42	1,25				
	25 PC 12 			6	2,5	360 m		25	18,4
				35	2,5				
				70	1,25				
Distribution - Katzfahren - Trolleying Distribución - Distribuzione		3 D1 V5		36				3	2,2
		3 D2 V5 -1		21 - 42				3	2,2
Orientation - Schwenken - Slewing Orientación - Rotazione		RCV 40		0 → 0,8 tr/min U/min-rpm				6	4,5
Translation - Kranfahren - Travelling Traslación - Traslazione	ZF 	TVD 324 C1		26				2 x 4	2 x 2,9
Réseau - Netzstrom - Mains supply - Red - Rete elettrica								380V - 50Hz	
Puissance électrique nécessaire - Anschlusswert - Necessary electric power Potencia eléctrica necesaria - Potenza elettrica necessaria								15 PC : 25 KVA 25 PC : 35 KVA	
Groupe électrogène - Stromaggregat - Generator set - Grupo electrogeno - Gruppo elettrogeno								*	

*Nous consulter - Auf Anfrage - Consult us - Consultamos - Consultateci

Conforme à la directive CEE 84/534 sur le niveau acoustique - Gemäss EWG-Richtlinie 84/534 Schall- Leistungspegel
 In compliance with the EEC 84/534 Instruction on noise level - Conforme con la direttiva CEE 84/534 sobre el nivel acustico
 Conforme colla direttiva CEE 84/534 sul livello acustico

DIN 15018 H1 B3

Copyright.Reproduction interdite © POTAIN 1992

POTAIN

GROUPE LEGRIS INDUSTRIES

18.Rue de Charbonnières, B.P. 173-F 69132 ECULLY Cedex
 Tél. 72.20.20.20 - Télex 375 213 - Fax 72.20.20.00
 POTAIN GmbH Deutschland Tel : 06.105.704.0
 POTAIN U.K. Great Britain Tel : 0895.44.52.61
 Simma POTAIN Italia Tel : 02.97.96.71
 POTAIN Portugal Portugal Tel : 02.968.08.89

CITY CRANE D12-10A DIN Réf. 1992.47 LFW 1