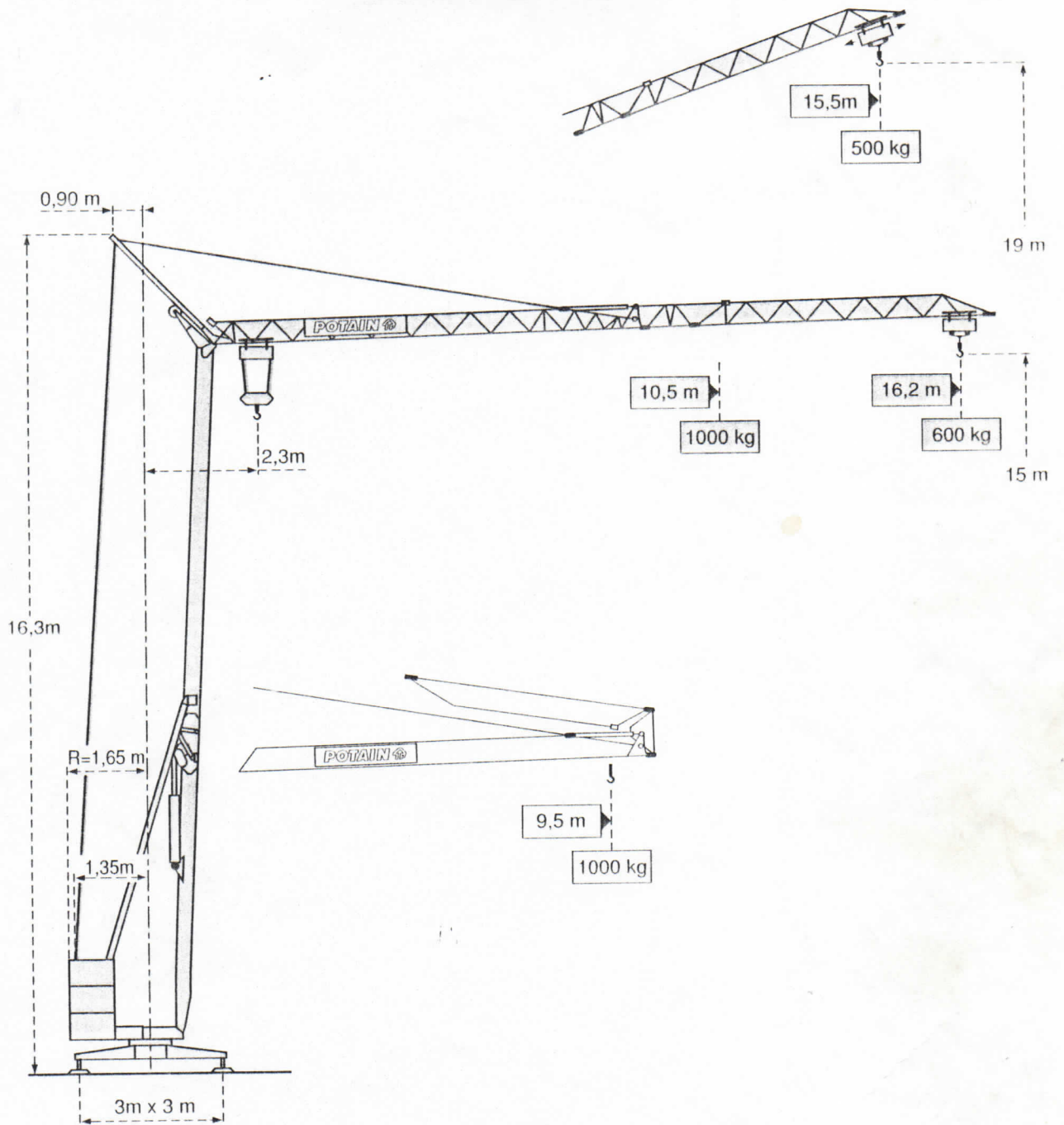


GMR HD 10 A



GMR HD 10 A

POTAIN ®

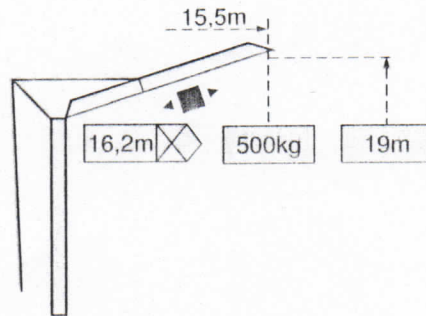
Courbes de charges - Lastkurven - Load diagrams - Curvas de cargas - Curve di carico




2,3 →	9,5 m
 16,2 m	1000 kg

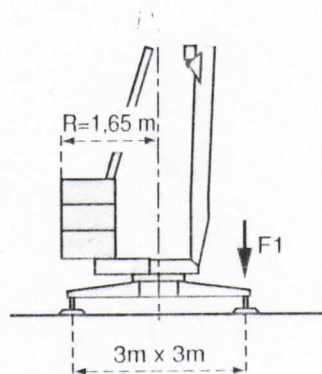
10,5	11	12	13	14	15	16	16,2 m
1000	950	855	780	715	660	610	600 kg


Flèche relevée - Ausleger in Steilstellung - Luffing jib - Flecha izada - Braccio impennato



 Chariot distributeur *Verfahrbare laufkatze* Traversing trolley *Carro distribuidor* Carrellino distributore

Réaction - Eckdrücke - Reactions - Reacciones - Reazioni



F1	● 6,5t	■
	3,8t	


● En service
■ Hors service


● In Betrieb
■ Ausser Betrieb


● In service
■ Out of service


● En servicio
■ Fuera de servicio


● In servizio
■ Fuori servizio

 A vide sans lest ni train de transport avec flèche et hauteur maximum.

 Ohne Last, Ballast und Transportachse, mit Maximalausleger und Maximalhöhe.

 Without load, ballast or transport axles, with maximum jib and maximum height.

 Sin carga, sin lastre, ni tren de transporte, flecha y altura máxima.

 A vuoto, senza zavorra ne assali di trasporto con braccio massimo e altezza massima.

Mécanismes - Antriebe - Mechanisms - Mecanismos - Meccanismi

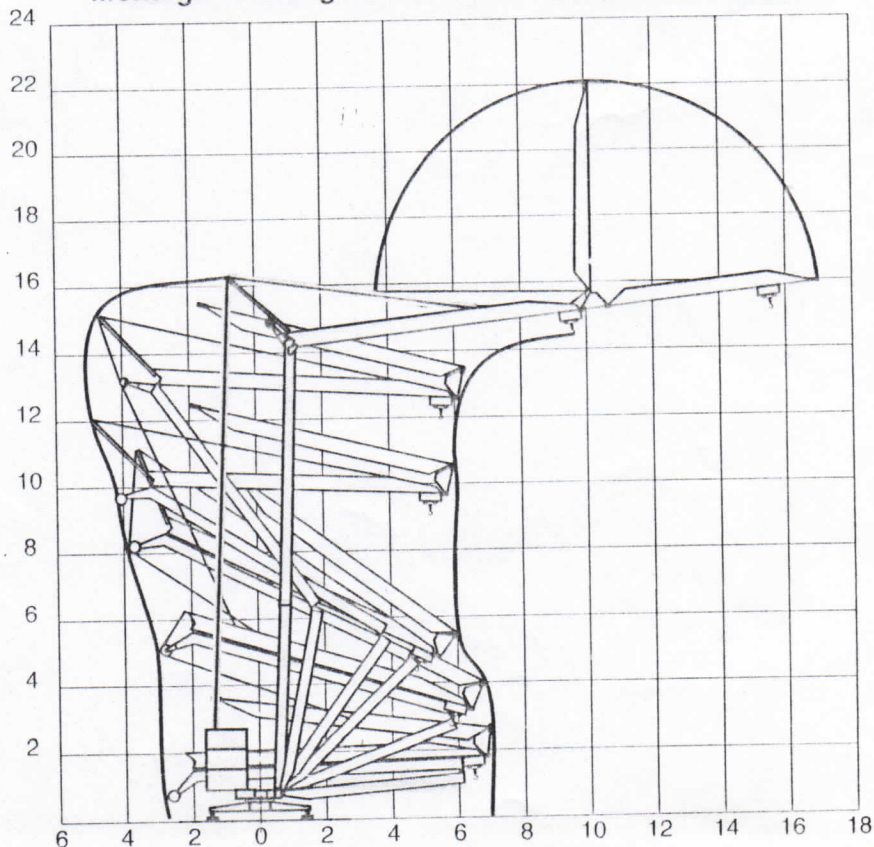
				m/mn	kg	ch -PS hp	kW
Levage <i>Heben</i> Hoisting <i>Elevación</i> Sollevamento	5L2V5	380V		↑ 17 ↓ 34	1000 600	5	3,7
Levage <i>Heben</i> Hoisting <i>Elevación</i> Sollevamento (220V/380V)	6LVF5	220V (1)		↑ 3,5	1000	4	3
				↑ 12	1000		
				↑ 20	600		
		380V		↓ 3,5	1000	6	4,4
				↓ 20	1000		
				↓ 34	600		
Levage <i>Heben</i> Hoisting <i>Elevación</i> Sollevamento	3L2V5	220V (1)		↑ 11 ↓ 22	1000 600	2,2	1,6
Distribution - <i>Katzfahren</i> - Trolleying <i>Distribución</i> - Distribuzione		1 DC1 V2		20		1,5	1,1
Orientation - <i>Schwenken</i> - Slewing <i>Orientación</i> - Rotazione		RVF 20		0,3 → 1 tr/mh - U/min - rpm		1	0,6
Réseau - <i>Netzstrom</i> - Mains supply - <i>Red</i> - Rete elettrica						(1) 220V 50 Hz 380V 50 Hz	
Puissance électrique nécessaire - <i>Anschlusswert</i> - Necessary electric power <i>Potencia eléctrica necesaria</i> - Potenza elettrica necessaria						(1) 220V : 4,6 kVA 380V : 7,5 kVA	
Groupe électrogène - <i>Stromaggregat</i> - Generator set - <i>Grupo electrogeno</i> - Gruppo elettrogeno						*	

(1) 220V 50 Hz Monophasé - *Einphasige* - Single phase - *Monofasica* - Monofase.

*Nous consulter - *Auf Anfrage* - Consult us - *Consultarnos* - Consultateci

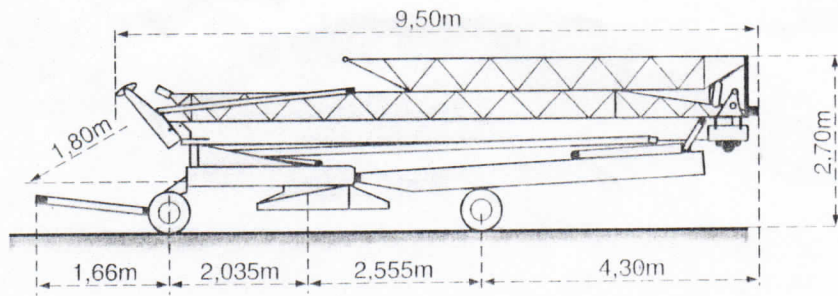
Conforme à la directive CEE 84/534 sur le niveau acoustique - *Gemäss EWG-Richtlinie 84/534 Schall- Leistungspegel*
In compliance with the EEC 84/534 Instruction on noise level - *Conforme con la direttiva CEE 84/534 sobre el nivel acustico*
Conforme colla direttiva CEE 84/534 sul livello acustico

Montage - Montage - Erection - Montaje - Montaggio



Transport - *Transport* - Transport - *Transporte* - Trasporto

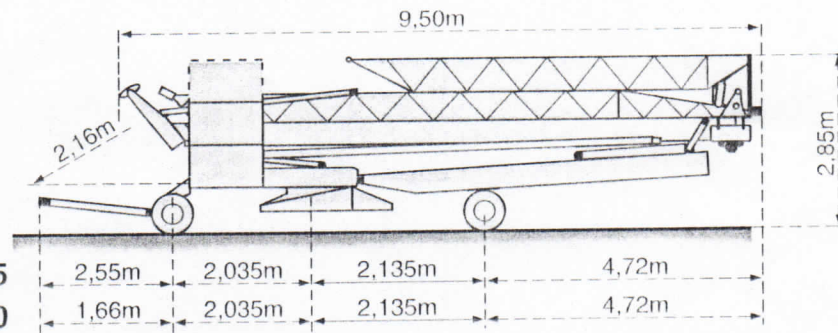
DS30 S30[●]



● Chantier
Baustelle
Site
Obra
Cantiere

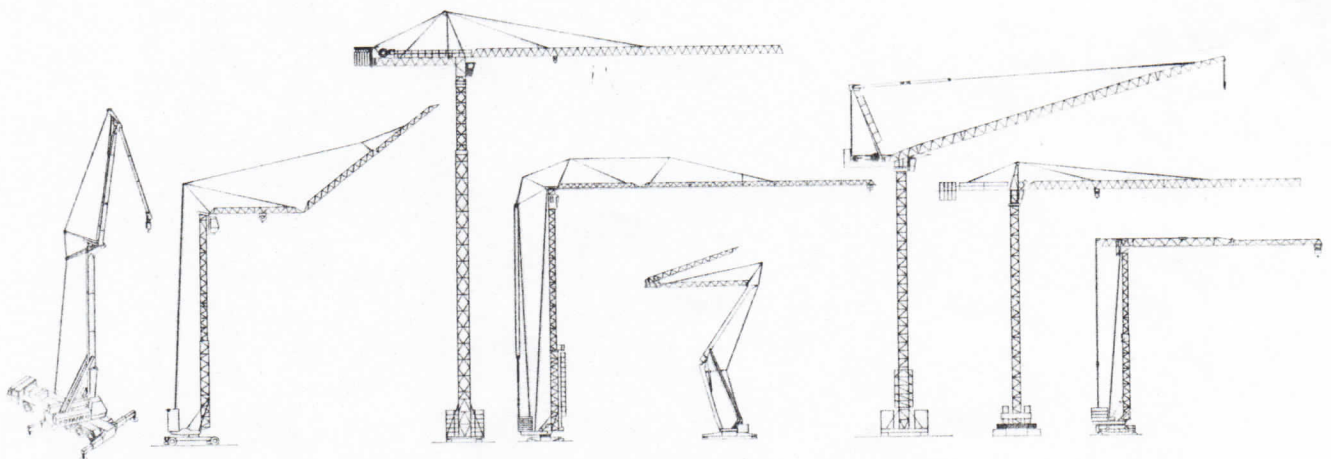
DS65 S65

DS51 S70[●]



DS65 S65
DS51 S70

CE NF E 52081 - 82
DIN 15018.H1 B3



Document pour usage commercial uniquement - *Benutzung dieser Unterlagen nur für Verkaufszwecke* - Document for commercial use only -
Documento para uso comercial unicamente - Documento per uso commerciale solamente

Copyright.Reproduction interdite © POTAIN 1994

POTAIN TP[®]
GROUPE LEGRIS INDUSTRIES

18, Rue de Charbonnières, B.P. 173-F 69132 ECULLY Cedex
Tél. 72.20.20.20 - Télex 375 213 - Fax 72.20.20.00

POTAIN GmbH Deutschland Tel : 06.105.704.0
POTAIN U.K. Great Britain Tel : 0895.44.52.61
Simma POTAIN Italia Tel : 02.97.96.71
POTAIN Portugal Portugal Tel : 02.968.08.89

GMR HD 10 A

Réf. 1994.10 LHG 1