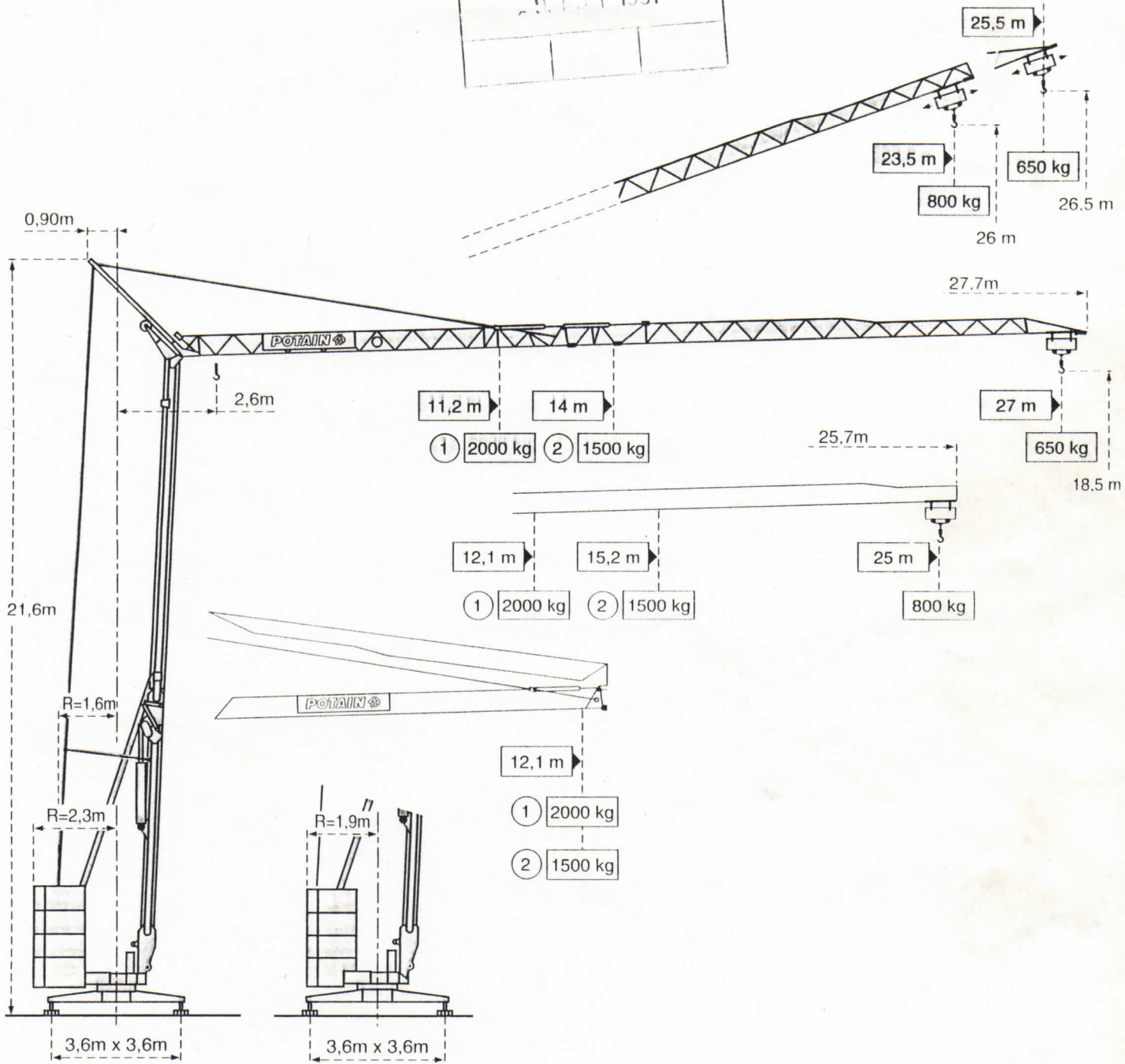


HD 21 B

Rutenbeck-Köln  
9. Mai 1997



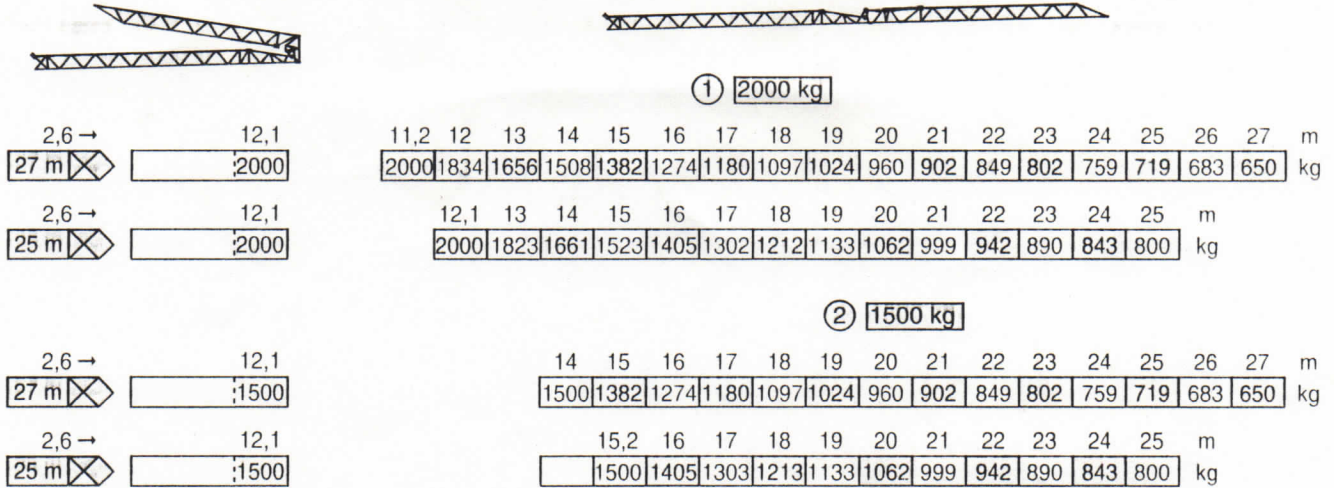
HD 21 B

LHU 8

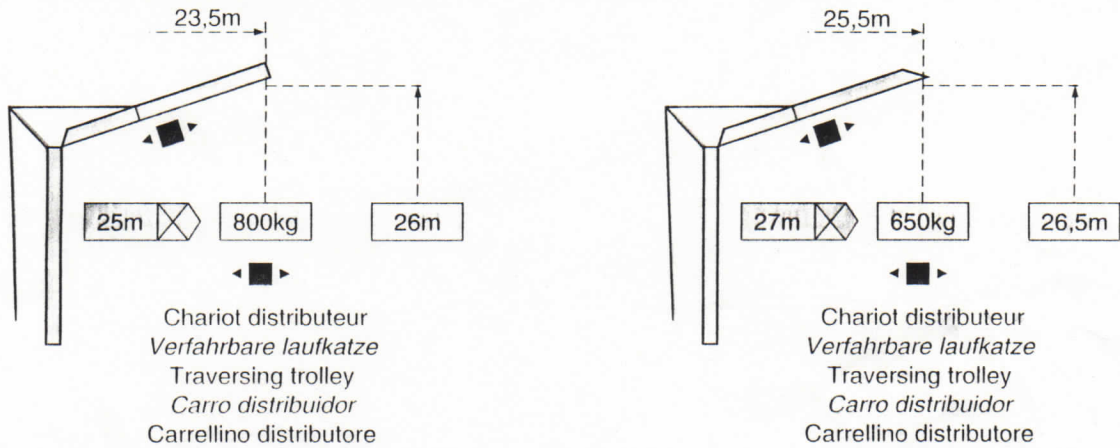
**POTAIN** 



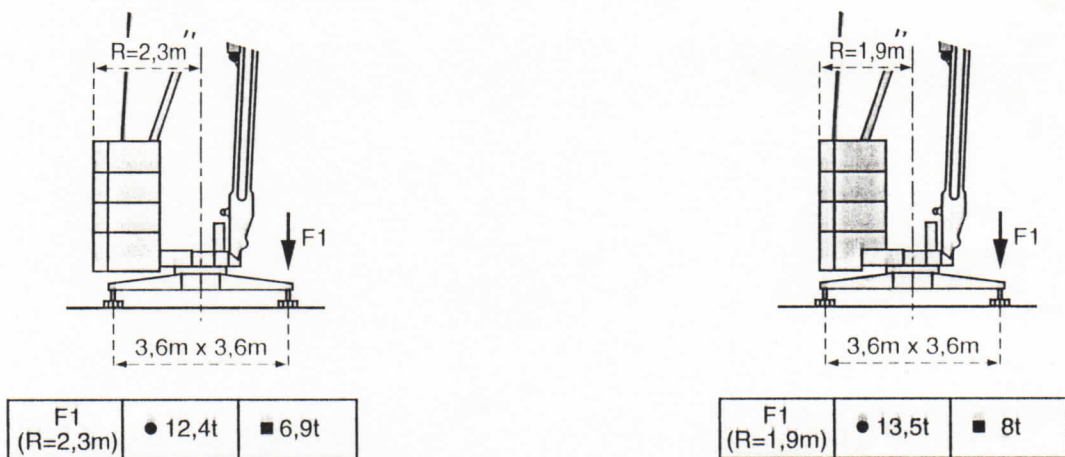
**Courbes de charges - Lastkurven - Load diagrams - Curvas de cargas - Curve di carico**




**Flèche relevée - Ausleger in Steilstellung - Luffing jib - Flecha izada - Braccio impennato**



**Réaction - Eckdrücke - Reactions - Reacciones - Reazioni**



	8,1t
---	------


● En service  
■ Hors service


● In Betrieb  
■ Ausser Betrieb


● In service  
■ Out of service


● En servicio  
■ Fuera de servicio


● In servizio  
■ Fuori servizio

 A vide sans lest ni train de transport avec flèche et hauteur maximum.











 Ohne Last, Ballast und Transportachse, mit Maximalausleger und Maximalhöhe.

 Without load, ballast or transport axles, with maximum jib and maximum height.

 Sin carga, sin lastre, ni tren de transporte, flecha y altura máxima.

 A vuoto, senza zavorra ne assali di trasporto con braccio massimo e altezza massima.

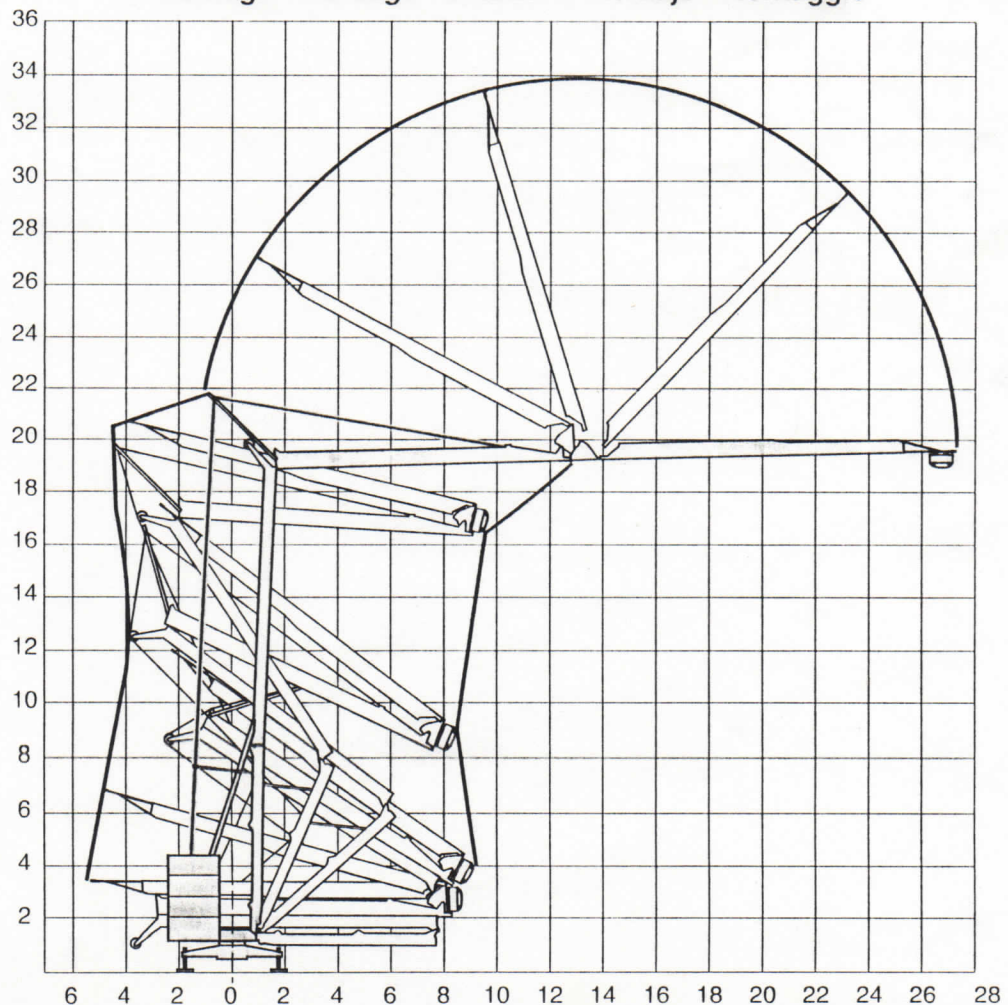
## Mécanismes - Antriebe - Mechanisms - Mecanismos - Meccanismi

				m/min	Kg	ch -PS hp	kW
Levage Heben Hoisting Elevación Sollevamento	①  2000kg	9 PC 10   	6,6	2000	8,2	6	
			20	2000			
			40	1000			
	②  1500kg	6 PC 7   	9,5	1500	6	4,4	
			19	1500			
			38	750			
Distribution - <i>Katzfahren</i> - Trolleying Distribución - Distribuzione		2 D2 V4	18 - 36		2	1,5	
Orientation - <i>Schwenken</i> - Slewing Orientación - Rotazione		RVF 30	0 → 0,9 tr/min - U/min - rpm		1,5	1,1	
Réseau - <i>Netzstrom</i> - Mains supply - <i>Red</i> - Rete elettrica					CEI 38 IEC 38	400V(+6%-10%) 50 Hz	
Puissance électrique nécessaire - <i>Anschlusswert</i> - Necessary electric power Potencia eléctrica necesaria - Potenza elettrica necessaria					① = 12 kVA ② = 10 kVA		
Groupe électrogène - <i>Stromaggregat</i> - Generator set - <i>Grupo electrogeno</i> - Gruppo elettrogeno					•		

\*Nous consulter - *Auf Anfrage* - Consult us - *Consultarnos* - Consultateci

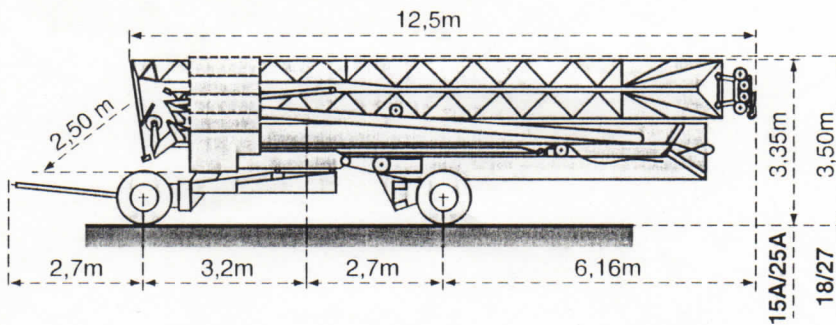
Conforme aux directives CEE 84/534 et 87/405 sur le niveau acoustique - *Gemäss EWG-Richtlinien 84/534 und 87/405 für den Schall- Leistungspegel*  
 In compliance with the EEC 84/534 and 87/405 Instructions on noise level - *Conforme con las directivas CEE 84/534 y 87/405 sobre el nivel acustico*  
 Conforme alle direttive CEE 84/534 e 87/405 sul livello acustico

## Montage - Montage - Erection - Montaje - Montaggio

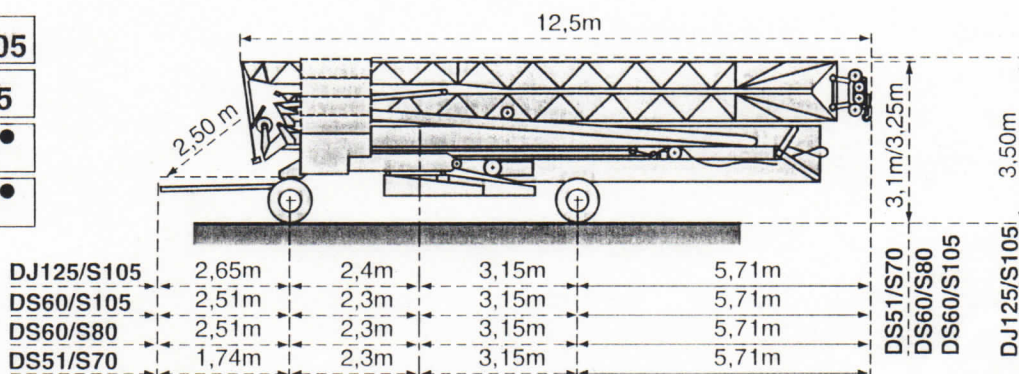


Transport - Transport - Transport - Transporte - Trasporto

18/27  
15A/25A



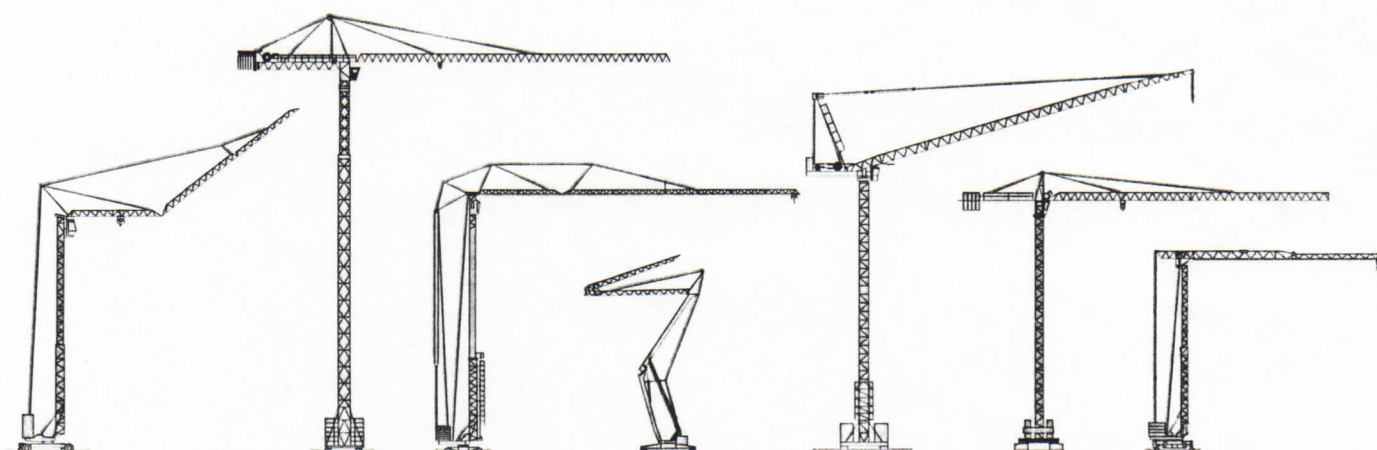
DJ125/S105  
DS60/S105  
DS60/S80  
DS51/S70



● Chantier  
Baustelle  
Site  
Obra  
Cantiere



NF E 52081 - 82  
DIN 15018.H1 B3



Copyright.Reproduction interdite © POTAIN 1994

**POTAIN** <sup>®</sup>  
GROUPE LEGRIS INDUSTRIES

18.Rue de Charbonnières, B.P. 173-F 69132 ECULLY Cedex  
Tél. (33)04.72.20.20.20 - Fax (33)04.72.20.20.00  
<http://www.potain.fr> - E-mail : [mkt@potain.fr](mailto:mkt@potain.fr)

POTAIN GmbH Deutschland Tel : 06.105.704.0  
SIMMAPOTAIN Italia Tel : 039.65.631  
Zhangjiagang POTAIN China Tel : 520.877.1451

HD 21 B

Réf. 1994.27 LHU 8

Modifiche riservate / Modifications reservadas / Subject to modification / Modificaciones reservadas / Modifiche riservate / Modifications vorbehalten / Änderungen vorbehalten / Modifications reserves / Printed in France / Réalisation SODIPE