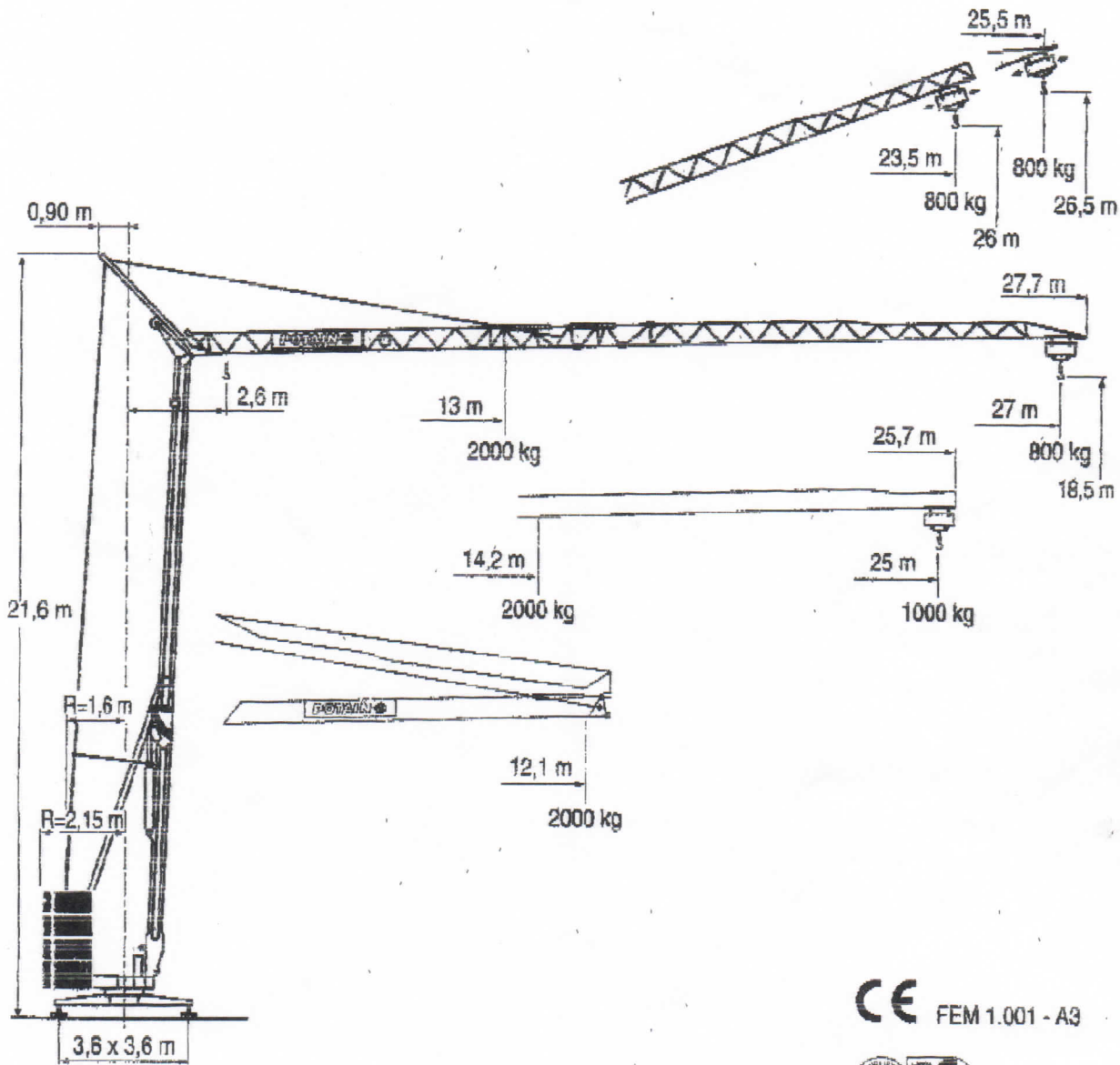


HD 25



HD

HDT

GTMR

CITY CRANE

TOPKIT MD

MR

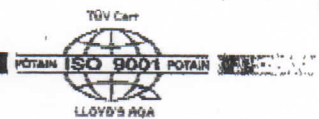
MAXI MD

MAXI TOPKIT

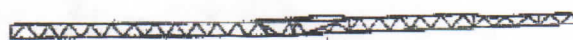
CE FEM 1.001 - A3



LOW 1



POTAIN



27 m	2,6 m	12,1	13	14	15	16	17	18	19	20	21	22	23	24	25	26	27 m	
		2000	2000	1820	1670	1540	1430	1330	1245	1165	1100	1035	980	930	880	840	800	kg
25 m	2,6 m	12,1	14,2	15	16	17	18	19	20	21	22	23	24	25 m				
		2000	2000	1875	1730	1610	1500	1405	1315	1240	1170	1110	1050	1000	kg			

LOW 1

Fleche relevée

F

Luffing jib

GB

Braccio impennato

I

Ausleger in Steilstellung

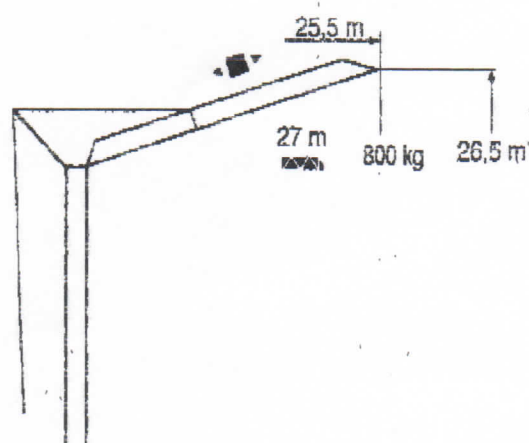
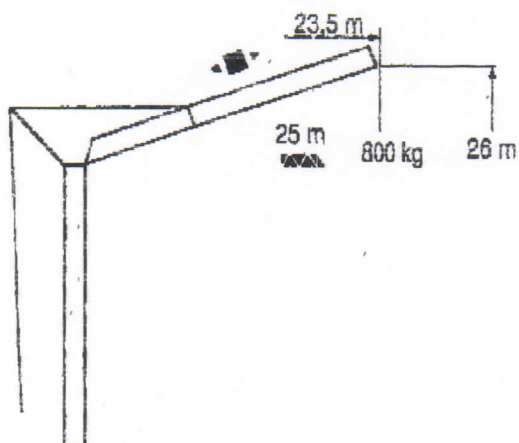
D

Flecha izada

E

起升吊臂

C



LOW 1

Chariot distributeur

F

Traversing trolley

GB

Carrellino distributore

I

Verfahrbare Laufkatze

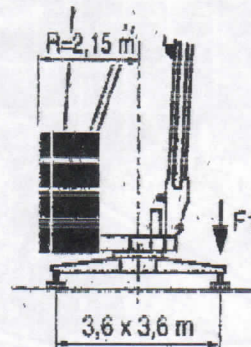
D

Carro distribuidor

E

变幅小车

C



F1 = 15,4 t = 7,4 t

▲ 8,2 t

LOW 1

● Réactions en service	Ⓕ Reactions in service	ⒼⒺ Reazioni in servizio	Ⓘ
■ Réactions hors service	Reactions out of service	Reazioni fuori servizio	
▲ A vide sans lest ni train de transport avec flèche et hauteur maximum	Without load, ballast or transport axles, with maximum jib and maximum height.	A vuoto, senza zavorra né assali di trasporto con braccio massimo e altezza massima	
● Reaktionskräfte in Betrieb	Ⓕ Reacciones en servicio	ⒼⒺ 工作状态下的反应	Ⓒ
■ Reaktionskräfte außer Betrieb	Reacciones fuera de servicio	非工作状态下的反应	
▲ Ohne Last, Ballast und Transportachse, mit Maximalausleger und Maximalhöhe.	Sin carga, sin lastre, ni tren de transporte, flecha y altura máxima.	空载无压载也无运输车有吊臂和最大高度	

Mécanismes

Mechanisms

ⒼⒺ Meccanismi

Ⓘ

Antriebe

Ⓕ Mecanismos

ⒼⒺ 机构

Ⓒ

				ch - PS hp	kW
▲ 9 RC 10	m/min	6,6	20	8,2	6
	kg	2000	2000		
▲ 9 LP 10	m/min	4	20	10,3	7,5
	kg	2000	2000		
▲ 2 D2 V4	m/min		18 - 36	2	1,5
● RVE 30	tr/min U/min rpm		0 → 0,9	1,5	1,1

CEI 38	IEC 38	KVA	84/534 - 87/405
400 V(+6% -10%) 50 Hz		12 kVA	

LOW 1

● Levage	Ⓕ Hoisting	ⒼⒺ Sollevamento	Ⓘ
■ Distribution	Trolleying	Distribuzione	
● Orientation	Slewing	Rotazione	
▲ Conforme aux directives CEE 84/534 et 87/405 sur le niveau acoustique	In compliance with the EEC 84/534 and 87/405 instructions on noise level	Conforme alle direttive CEE 84/534 e 87/405 sul livello acustico	
● Heben	Ⓕ Elevación	ⒼⒺ 提升	Ⓒ
■ Katzfahren	Distribución	变幅	
● Schwenker	Orientación	回转	
▲ Gemäss EWG-Richtlinien 84/534 und 87/405 für den Schall-Leistungspegel	Conforme con las directivas CEE 84/534 y 87/405 sobre el nivel acustico	符合 CEE 84/534 - CEE 87/405 声功率规定	