

GMR HD 26 A



Courbes de charges - Lastkurven - Load diagrams - Curvas de cargas - Curve di carico



2,8 →	11,8	12	13	14
28 m	3000	2920	2640	2400
2,8 →	11,8	12	13	14
26 m	3000	2920	2640	2400

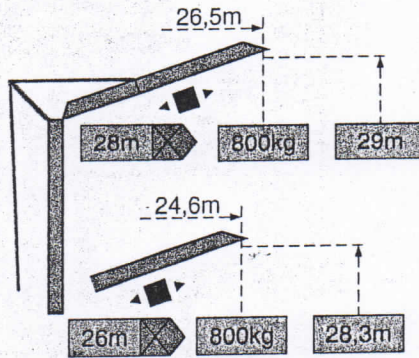
2,8 →	14
28 m	2000
2,8 →	14
26 m	2000



3000kg															
10,2	11	12	13	14	15	16	17	18	19	20	22	24	26	28	m
3000	2710	2420	2180	1980	1815	1670	1545	1435	1340	1250	1105	985	885	800	kg
11	12	13	14	15	16	17	18	19	20	22	24	26	m		
3000	2695	2430	2210	2025	1870	1730	1610	1500	1405	1245	1110	1000	kg		

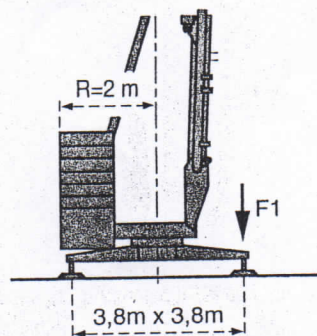
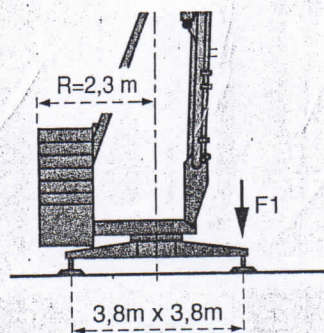
2000kg											
14,1	15	16	17	18	19	20	22	24	26	28	m
2000	1850	1710	1580	1475	1380	1295	1150	1030	935	850	kg
14,8	15	16	17	18	19	20	22	24	26	m	
2000	1970	1820	1690	1575	1475	1385	1230	1105	1000	kg	

Flèche relevée - Ausleger in Steilstellung - Luffing jib - Flecha izada - Braccio impennato



◀ ▶ Chariot distributeur Verfahrbare Laufkatze Traversing trolley Carro distribuidor Carrellino distributore

Réaction - Eckdrücke - Reactions - Reacciones - Reazioni



F1	● 18.3t	■ 12t
⊕	9.7t	

● En service
■ Hors service

● In Betrieb
■ Ausser Betrieb

● In service
■ Out of service

● En servicio
■ Fuera de servicio

● In servizio
■ Fuori servizio

⊕ A vide sans lest ni train de transport avec flèche et hauteur maximum.















⊕ Ohne Last, Ballast und Transportachse, mit Maximalausleger und Maximalhöhe.

⊕ Without load, ballast or transport axles, with maximum jib and maximum height.

⊕ Sin carga, sin lastre, ni tren de transporte, flecha y altura máxima.

⊕ A vuoto, senza zavorra ne assali di trasporto con braccio massimo e altezza massima.

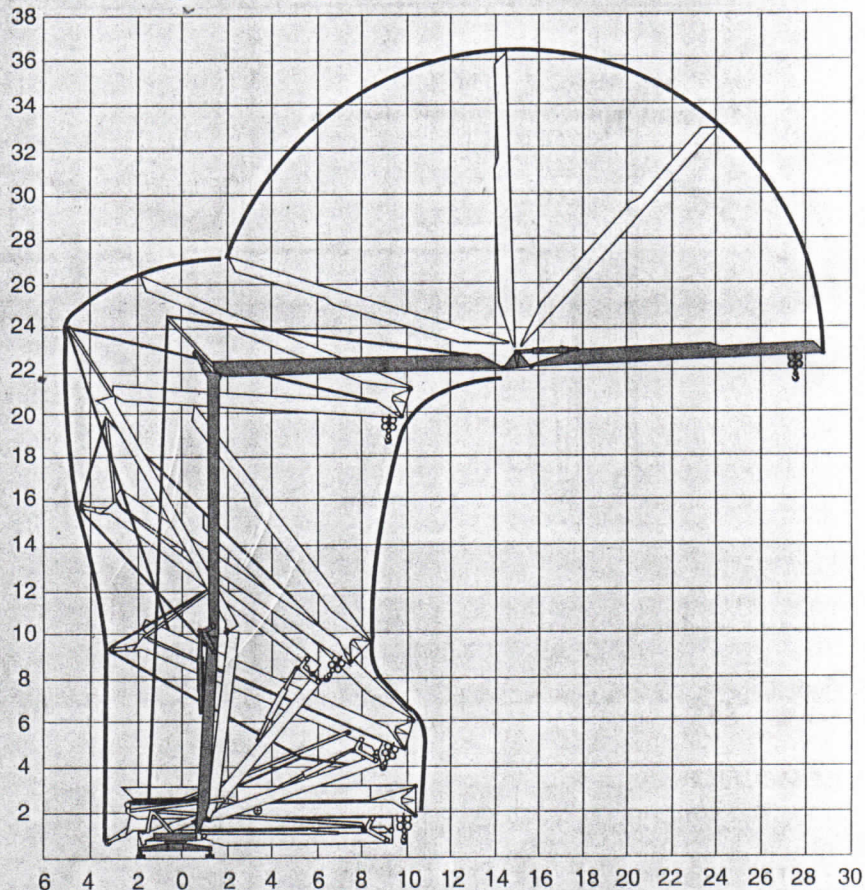
Mécanismes - Antriebe - Mechanisms - Mecanismos - Meccanismi

				m/min	kg	ch -PS hp	kW	
Levage Heben Hoisting Elevación Sollevamento	15 RPC 10			9	1500	15	11	
				27	1500			
				54	1000			
				4,5	3000			
				13,5	3000			
				27	2000			
	9 PC 10			6,6	2000	8,2	6	
				20	2000			
				40	1000			
	Distribution - <i>Katzfahren</i> - Trolleying Distribución - Distribuzione		2 D2 V4	18 - 36			2	1,5
	Orientation - <i>Schwenken</i> - Slewing Orientación - Rotazione		RCV 20	0 → 1 tr/min - U/min - rpm				2,2
	Réseau - <i>Netzstrom</i> - Mains supply - <i>Red</i> - Rete elettrica						380V.50Hz	
Puissance électrique nécessaire - <i>Anschlusswert</i> - Necessary electric power Potencia eléctrica necesaria - Potenza elettrica necessaria						9PC:14 kVA 15RPC:20 kVA		
Groupe électrogène - <i>Stromaggregat</i> - Generator set - <i>Grupo electrogeno</i> - Gruppo elettrogeno						*		

*Nous consulter - *Auf Anfrage* - Consult us - *Consultarnos* - Consultateci

Conforme à la directive CEE 84/534 sur le niveau acoustique - *Gemäss EWG-Richtlinie 84/534 Schall- Leistungspegel*
 In compliance with the EEC 84/534 Instruction on noise level - *Conforme con la direttiva CEE 84/534 sobre el nivel acustico*
 Conforme colla direttiva CEE 84/534 sul livello acustico

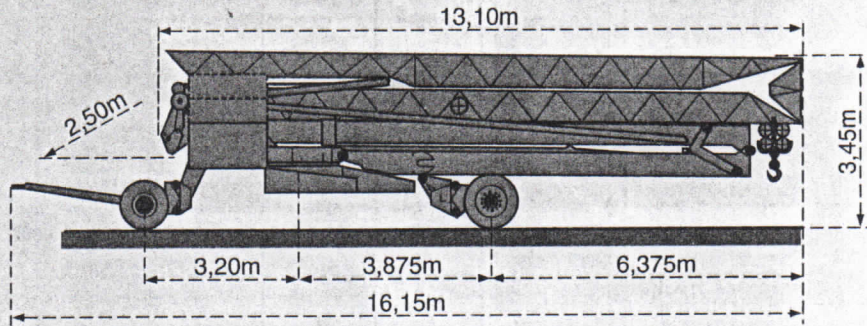
Montage - *Montage* - Erection - *Montaje* - *Montaggio*



Transport - Transport - Transport - Transporte - Trasporto

15A/25A

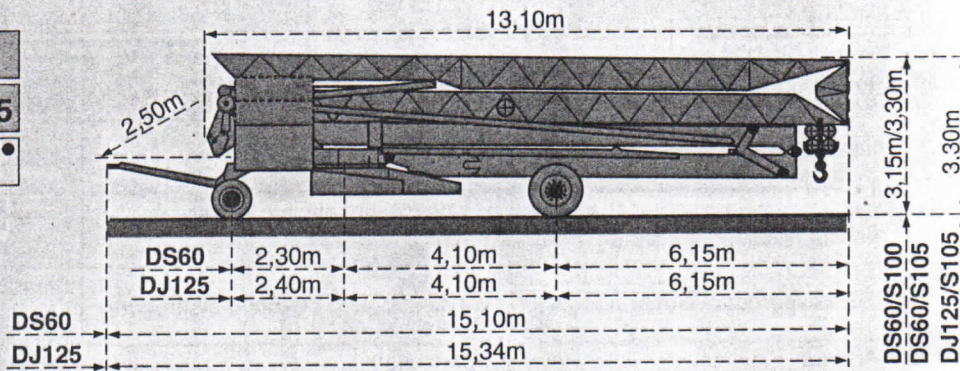
18/27



DS60/S105

DJ125/S105

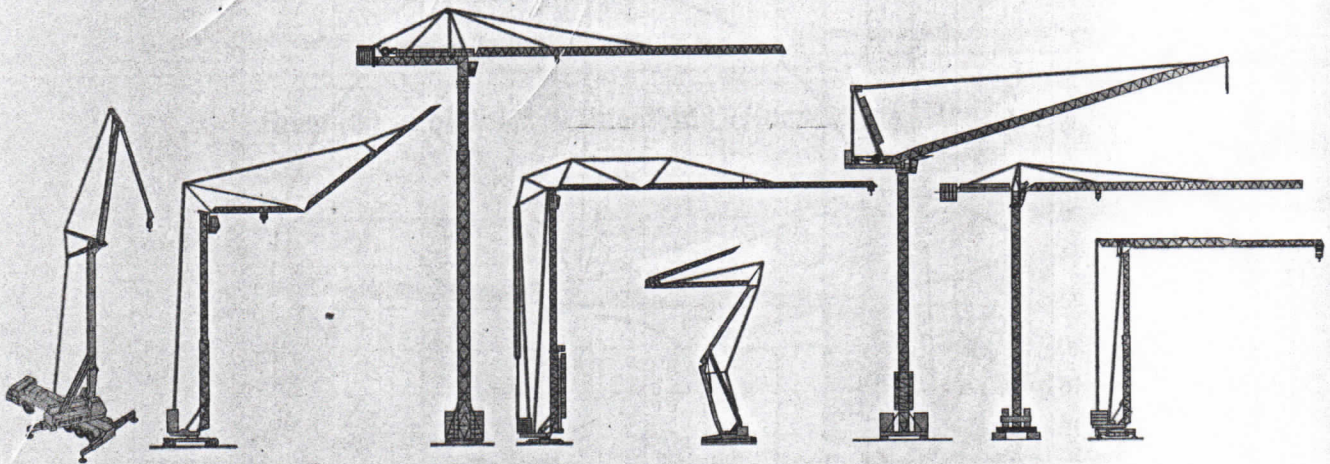
DS60/S100



● Chantier
Baustelle
Site
Obra
Cantiere



NF E 52081 - 82
DIN 15018.H1 B3



Document pour usage commercial uniquement - Benutzung dieser Unterlagen nur für Verkaufszwecke - Document for commercial use only -
Documento para uso comercial unicamente - Documento per uso commerciale solamente

Copyright.Reproduction interdite © POTAIN 1994

POTAIN

GRUPE LEGRIS INDUSTRIES

18.Rue de Charbonnières, B.P. 173-F 69132 ECULLY Cedex
Tél. 72.20.20.20 - Télex 375 213 - Fax 72.20.20.00

POTAIN GmbH	Deutschland	Tel : 06.105.704.0
POTAIN U.K.	Great Britain	Tel : 0895.44.52.61
Simma POTAIN	Italia	Tel : 02.97.96.71
POTAIN Portugal	Portugal	Tel : 02.968.08.89

GMR HD 26 A

Réf. 1994.01 LGX 1

Modifiche riservate

Modificaciones reservadas

Subject to modification

Änderungen vorbehalten

Modifications réservées

Printed in France

Réalisation SODIPE