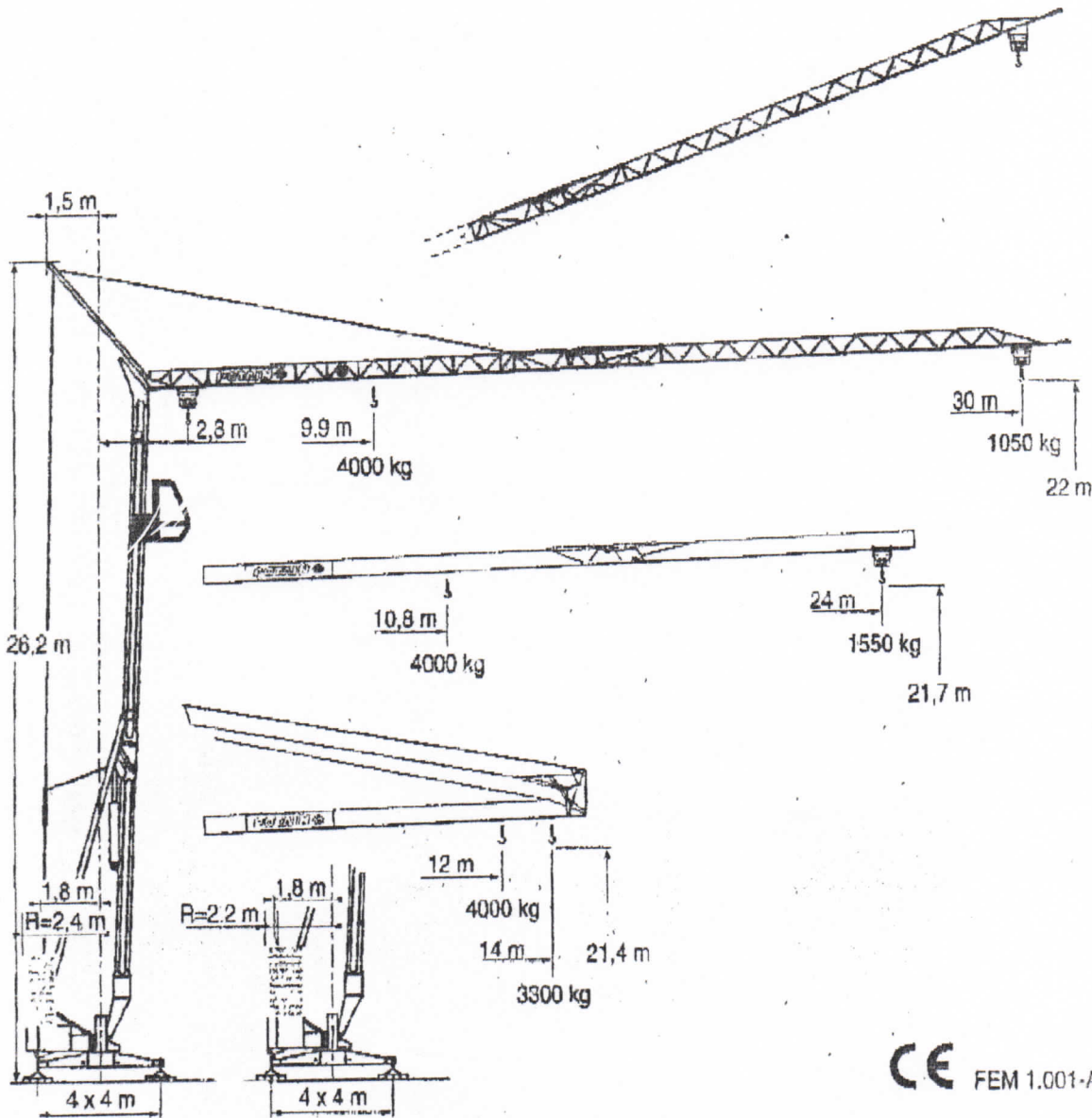


HD 32 B



LRA2

- HD
- HDT
- GTMR
- CITY CRANE
- TOPKIT MD
MAXI MD
- MAXI TOPKIT
- Topless MDT
- MR

CE FEM 1.001-A3

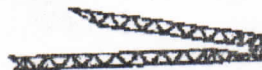


POTAIN TP

Courbes de charges
Lastkurven

Load diagrams
Curvas de cargas

Curve di carico
负荷曲线

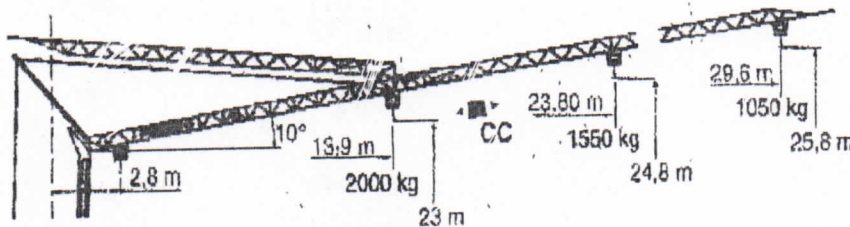


30 m	2,8	12	14	9,9	10	11	12	13	15	17	17,6	19	20	22	24	26	28	30	m
		4000	3300	4000	3960	3510	3140	2840	2380	2040	-	1780	1670	1480	1330	1200	1090	1000	kg
											2000	1830	1720	1530	1380	1250	1140	1050	kg
24 m	2,8	12	14	10,8	11	12	13	15	17	18	19,4	20	22	24					m
		4000	3300	4000	3920	3510	3180	2670	2290	2140	-	1880	1670	1500					kg
											2000	1930	1720	1550					kg

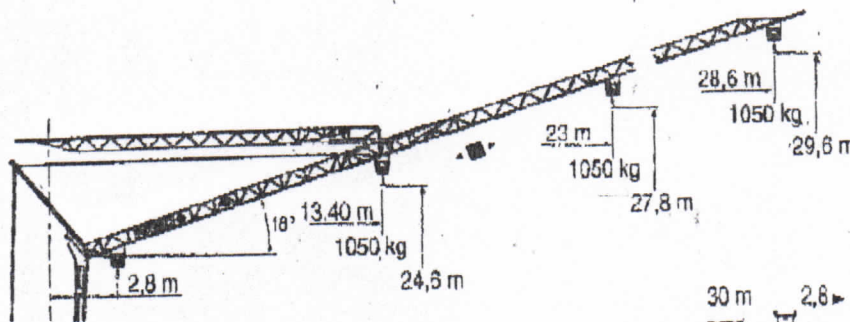
Flèche relevée
Ausleger in Steilstellung

Luffing jib
Flecha izada

Braccio impennato
起升吊臂



30 m	2,8	17,1	17,4	18	20	22	25	27	29,6	m	
		2000	-	1870	1640	1480	1240	1130	1000	kg	
				2000	1920	1690	1510	1290	1180	1050	kg
24 m	2,8			18,8	19,2	20	22	23,8		m	
				2000	-	1880	1650	1500		kg	
				2000	1910	1700	1550			kg	



30 m	2,8								28,6	m
									1000	kg
									1050	kg
24 m	2,8								23	m
									1000	kg
									1050	kg

Chariot distributeur
Chariot distributeur et courbes de charges

Traversing trolley
Traversing trolley and load diagrams

Carrellino distributore
Carrellino distributore e curve di carico

Verfahrbare Laufkatze
Verfahrbare Laufkatze und Lastkurven

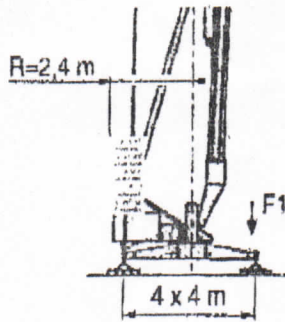
Carro distribuidor
Carro distribuidor y curvas de cargas

变幅小车
变副滑车和负荷曲线

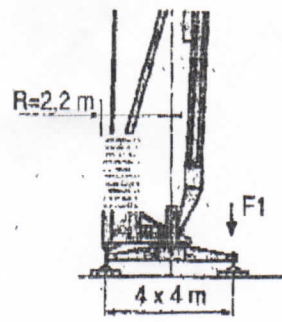
Réactions
Eckdrücke

Reactions
Reacciones

Reazioni
反力



F1 = 21,2 t = 13,9 t
▲ 11,1 t



F1 = 21,6 t = 14,3 t
▲ 11,1 t

LPA 1

- Réactions en service
- Réactions hors service
- ▲ A vide sans lest (ni train de transport) avec flèche et hauteur maximum
- Reaktionskräfte in Betrieb
- Reaktionskräfte außer Betrieb
- ▲ Ohne Last, Ballast (und Transportachse), mit Maximalausleger und Maximalhöhe.

- Reactions in service
- Reactions out of service
- ▲ Without load, ballast (or transport axles), with maximum jib and maximum height.
- Reacciones en servicio
- Reacciones fuera de servicio
- ▲ Sin carga, sin lastre, (ni tren de transporte), flecha y altura máxima.

- Reazioni in servizio
- Reazioni fuori servizio
- ▲ A vuoto, senza zavorra (ne assali di trasporto) con braccio massimo e altezza massima
- 工作状态下的反应
- 非工作状态下的反应
- ▲ 空载无压重也无运输车有吊臂最大高度

Mécanismes
Antriebe

Mechanisms
Mecanismos

Meccanismi
机构

		🗑️				🗑️				ch - PS hp	kW	
▲	15 LVF 10	m/min	5	27	43	53	2,5	13,5	21,5	28,5	15	11
		kg	2000	2000	1250	1050	4000	4000	2500	2000		
▲	15 RPC 10 A	m/min	9	27	54		4,5	13,5	27		15	11
		kg	2000	2000	1050		4000	4000	2000			
◀ ▶	3 D2 V5/2	m/min	21 - 42								2,7	2
🌀	RVF 30	tr/min U/min rpm	0 → 0,2 → 0,8								1,5	1,1

CEI 38	🔌	IEC 38	kVA	🎧
400 V (+6% -10%) 50 Hz		20 kVA		84/534 - 87/405

LRA 1

- 🌀 Levage
- ◀ ▶ Distribution
- 🌀 Orientation
- 🎧 Conforme aux directives CEE 84/534 et 87/405 sur le niveau acoustique

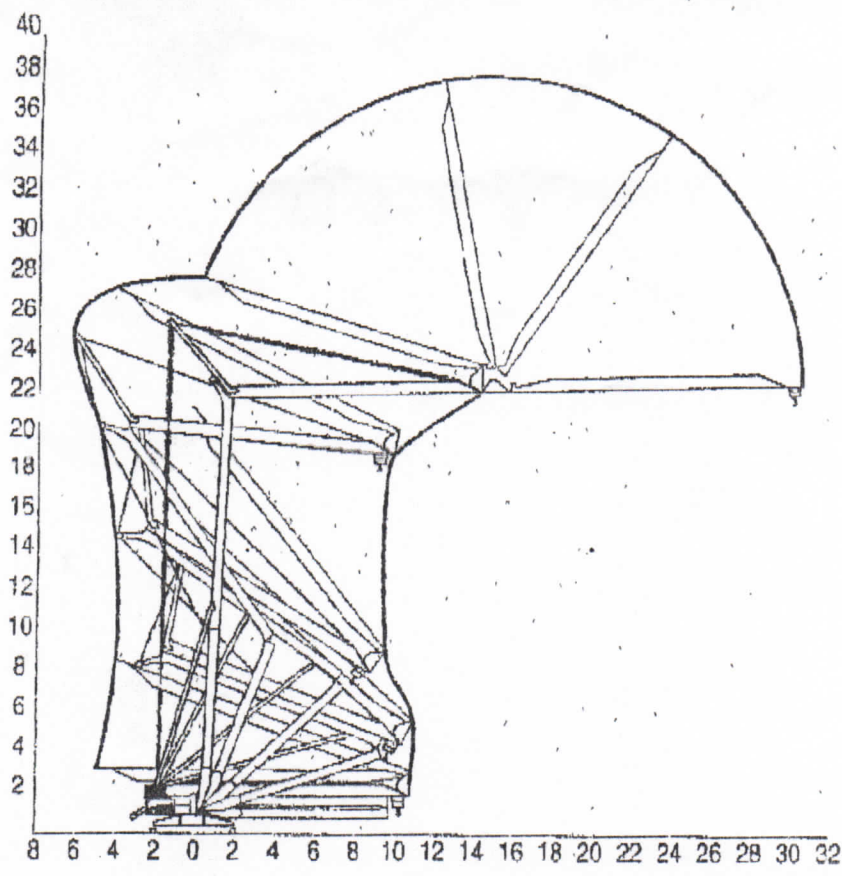
- 🌀 Hoisting
- ◀ ▶ Trolleying
- 🌀 Slewing
- In compliance with the EEC 84/534 and 87/405 instructions on noise level

- 🌀 Sollevamento
- ◀ ▶ Distribuzione
- 🌀 Rotazione
- Conforme alle direttive CEE 84/534 e 87/405 sul livello acustico

- Heben
- ◀ ▶ Katzfahren
- 🌀 Schwenken
- 🎧 Gemäss EWG-Richtlinien 84/534 und 87/405 für der Schall-Leistungspegel

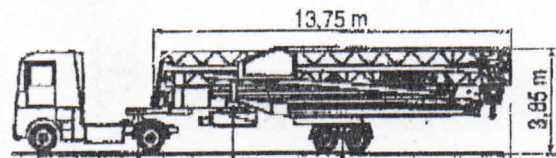
- Elevación
- ◀ ▶ Distribución
- 🌀 Orientación
- Conforme con las directivas CEE 84/534 y 87/405 sobre el nivel acustico

- 起升
- ◀ ▶ 变幅
- 🌀 回转
- 符合 CEE 84/534 - CEE 87/405 声功率规定

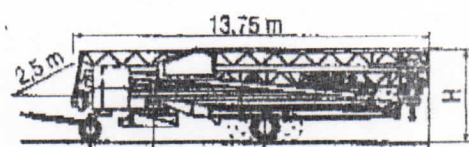


LRA1

Transport **Transport** **Trasporto**
Transport **Transporte** **运输**



SL122/J215M	3,4 m	4,21 m	6,06 m
SL121/S215M	3,4 m	4,21 m	6,06 m



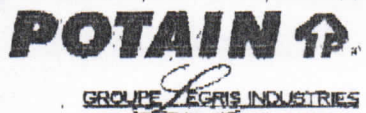
DS60/S105	2,4 m	4,1 m	6,17 m	3,30/3,45 m
DS80/J100	2,4 m	4,1 m	6,17 m	3,30/3,45 m
DJ126M/S105	2,5 m	4,52 m	5,75 m	3,45 m
DJ126M/S215M	3,3 m	4,21 m	6,06 m	3,9 m
CJ125M/J215M	3,3 m	4,21 m	6,06 m	3,9 m

SL122/J215M **SL121/S215M** **CJ125M/J215M** **DJ126M/S215M** **DJ126M/S105**
DS60/S105 **DS80/J100** ○

LRA1

○ Chantier Site Cantiere
 ○ Baustelle Obra 工地运输

Réf. 1999 04 LRA 1



18, Rue de Charbonnières, B.P. 173
 F-69132 ECULLY Cedex
 Tél. (33)04.72.18.20.20
 Fax (33)04.72.18.20.00
 http://www.potain.com
 E-mail: mkt@potain.fr

HD 32 B

Copyright. Reproduction interdite (©) POTAIN 1999

Deutschland
 POTAIN GmbH Tel: 06.105.704.0
Italia
 POTAIN S.p.A. Tel: 039.65.631
Singapore
 POTAIN PTE LTD Tel: (00.65) 227.1550

Modifiche di serie Modifikationen Modifications series 系列改装
 Änderungen vorbehalten Subject to modification

Rechaînage SOCIIFE