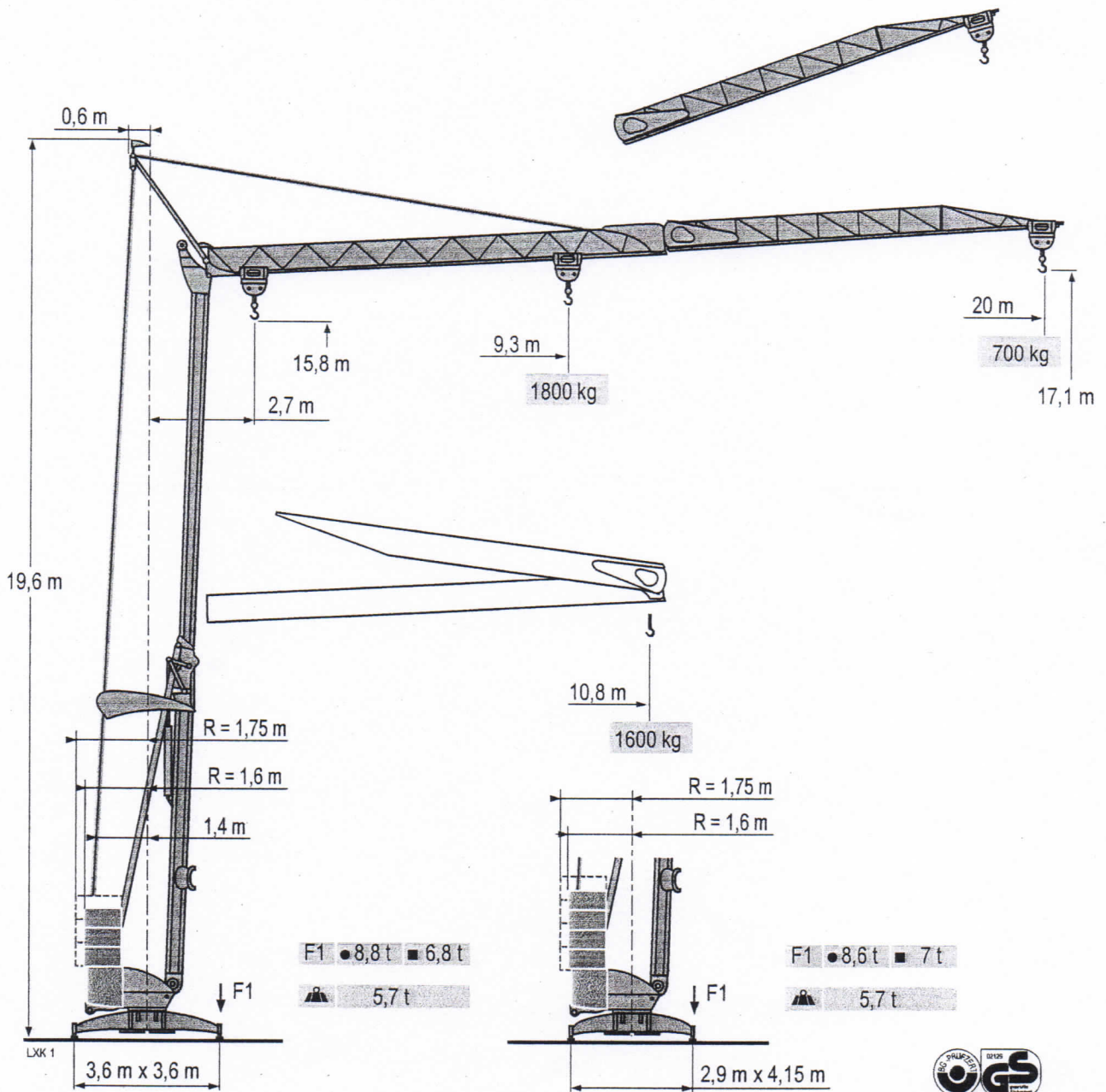


# POTAIN

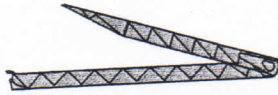
## Igo 13



CE FEM 1.001-A3

Courbes de charges  
Lastkurven  
Load diagrams  
Curvas de cargas

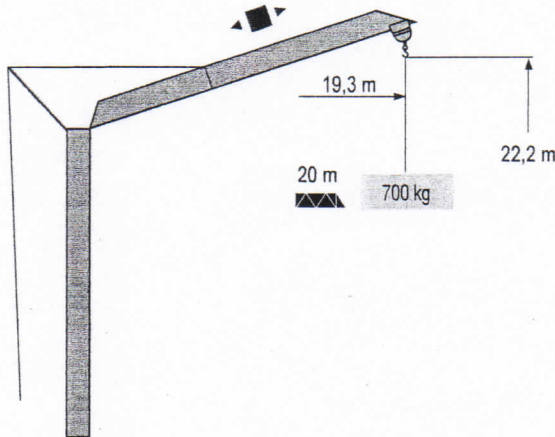
Curve di carico 20 m  
Curva de cargas



2,8	▶	9,8	10,8	m	9,3	10	11	12	13	14	15	16	17	18	19	20	m
		1800	1600	kg	1800	1650	1463	1315	1190	1090	1000	925	855	800	745	700	kg

LXK 1

Flèche relevée  
Ausleger in Steilstellung  
Luffing jib  
Flecha izada  
Braccio impennato  
Lança inclinada



LXK 1

Igo 13

**POTAIN**



**F**

Chariot distributeur  
Réactions en service

Réactions hors service

A vide sans lest (ni train de transport) avec flèche et hauteur maximum.

**D**

Verfahrbare Laufkatze

Reaktionskräfte in Betrieb

Reaktionskräfte außer Betrieb

Ohne Last, Ballast (und Transportachse), mit Maximalausleger und Maximalhöhe.

**GB**

Traversing trolley

Reactions in service

Reactions out of service

Without load, ballast (or transport axles), with maximum jib and maximum height.

**E**

Carro distribuidor

Reacciones en servicio

Reacciones fuera de servicio

Sin carga, sin lastre, (ni tren de transporte), flecha y altura máxima.

**I**

Carrellino distributore

Reazioni in servizio

Reazioni fuori servizio

A vuoto, senza zavorra (ne assali di trasporto) con braccio massimo e altezza massima.

**P**

Carro distribuidor

Reações em serviço

Reações fora de serviço

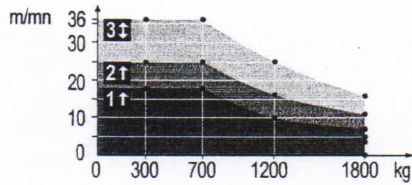
Sem carga (nem trem de transporte)- sem lastro com lança e altura máximas.

Mécanismes  
Antriebe  
Mechanisms  
Mecanismos  
Meccanismi  
Mecanismos

LUX 2

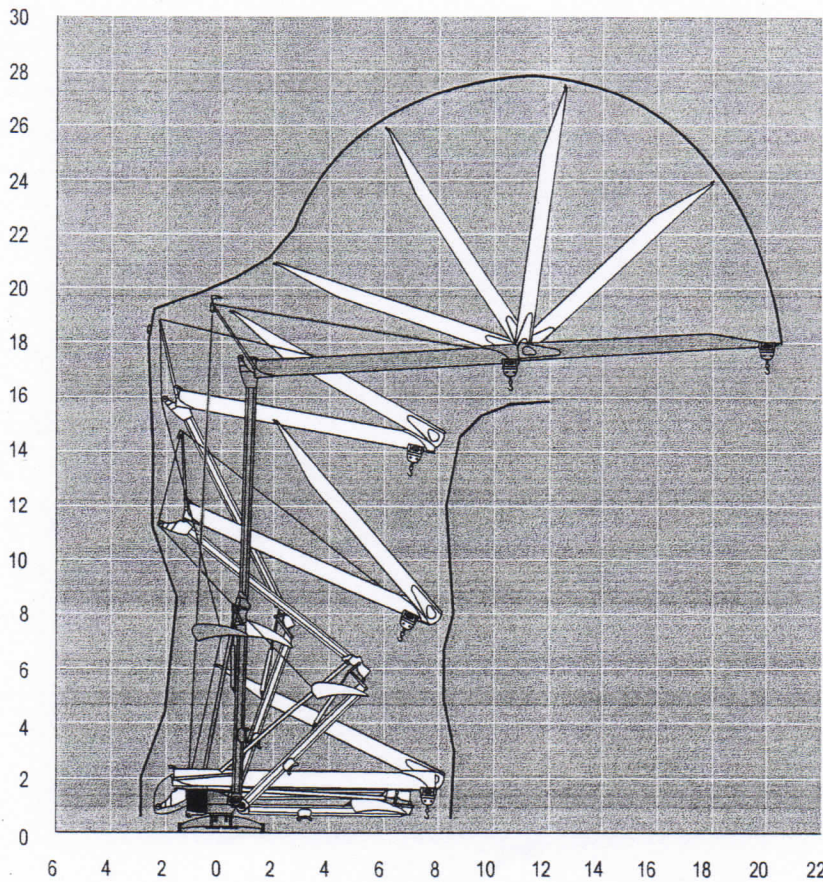
							ch - PS hp	kW
	8 LVF 9 Optima	230 V // 20 A <b>1</b>	m/min	↑ 3,5 ↓ 3,5	↑ 7 ↓ 16	↑ 18 ↓ 36	3,3	2,4
			kg	1800	1800	700		
		230 V // 32 A <b>2</b>	m/min	↑ 3,5 ↓ 3,5	↑ 11 ↓ 16	↑ 25 ↓ 36	5,2	3,8
			kg	1800	1800	700		
		400 V <b>3</b>	m/min	↓ 3,5	↓ 16	↓ 36	7,5	5,5
			kg	1800	1800	700		
	1 DVF 4	-	m/min	14 - 28			1,5	1,1
	RVF 20	-	tr/min U/min rpm	0 → 1			1,5	1,1
CEI 38			IEC 38			kVA		
230 V(+6% -10%) 50 Hz // 400 V(+6% -10%) 50 Hz			230 V 20 A : 4,6 kVA 230 V 32 A : 7,4 kVA 400 V : 11 kVA					

8 LVF 9  
Optima



Montage  
Montage  
Erection  
Montaje  
Montaggio  
Montagem

LUX 1



Igo 13

POTAIN



**F**  
Levage  
Distribution  
Orientation  
50 Hz Monophasé

**D**  
Heben  
Katzfahren  
Schwenken  
50 Hz Einphasige

**GB**  
Hoisting  
Trolleying  
Slewing  
50 Hz Single phase

**E**  
Elevación  
Distribución  
Orientación  
50 Hz Monofásica

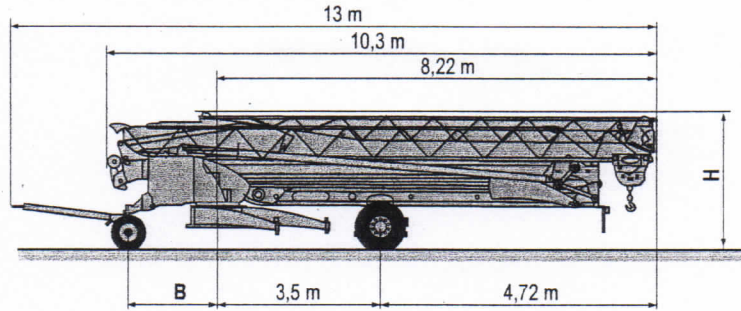
**I**  
Sollevamento  
Distribuzione  
Rotazione  
50 Hz Monofase

**P**  
Elevação  
Distribuição  
Rotação  
50 Hz monofásica

Transport  
Transport  
Transport  
Transporte  
Trasporto  
Transporte

- DS51/S70 ○
- DS61/S80 ○
- DS61/S120 ○
- DS61/S125
- DS65/S65
- DJ80/S120 ○
- DJ80/S125
- DJ100/S120
- DJ105/S125
- DJ126M/S125

LXK 2



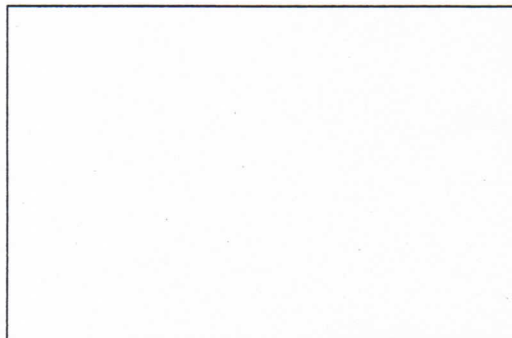
	B (m)	H (m)
DS51/S70	1,93	2,85/3
DS61/S80	2,03	2,85/3
DS61/S120	2,03	2,85/3
DS61/S125	2,03	2,85/3
DS65/S65	1,93	2,85/3
DJ80/S120	2,03	2,82/2,97
DJ80/S125	2,03	2,82/2,97
DJ100/S120	2,03	2,82/2,97
DJ105/S125	2,03	2,82/2,97
DJ126M/S125	2,03	3,65/3,8

○	Chantier	Baustelle	Site	Obra	Cantiere	Estaleiro

Document commercial non contractuel. Pour toute information technique se référer à la notice correspondante. Unverbindliches Vertriebsdokument. Für technische Informationen, siehe die entsprechenden Anweisungen. This commercial document is not legally binding. For any technical information, please refer to the corresponding instructions. Documento comercial non contractuel. Para cualquier información técnica, ver la noticia correspondiente. Documento commerciale non vincolante, per tutte le informazioni tecniche fare riferimento al catalogo istruzioni. Documento comercial não contratual. Para qualquer informação técnica complementar consultar as respectivas instruções.

**Manitowoc**  
Crane CARE

**POTAIN**   
Manitowoc Crane Group



<b>Americas</b>				
Tel : +1 888 479 7278 Tel : +1 717 593 2000				
<b>Europe - Middle East - Africa</b>				
Tel : +33 (0) 4 72 18 20 00 Tel : +44 (0) 191 522 2000				
<b>Asia - Pacific</b>				
Tel : +65 6284 1188 Fax : +65 6862 4040				
<a href="http://www.manitowoccrane.com">www.manitowoccrane.com</a>				

18, rue de Charbonnières - B.P.173  
69132 ECULLY Cedex - France  
Tél. : +33 (0) 4 72 18 20 20  
Fax. : +33 (0) 4 72 18 20 00  
[www.manitowoccrane.com](http://www.manitowoccrane.com)

**Igo 13**  
Code P-91985-41 Réf. 2003 48 LXK 4

Copyright.Reproduction interdite © POTAIN 2003

Réalisation Sedoc