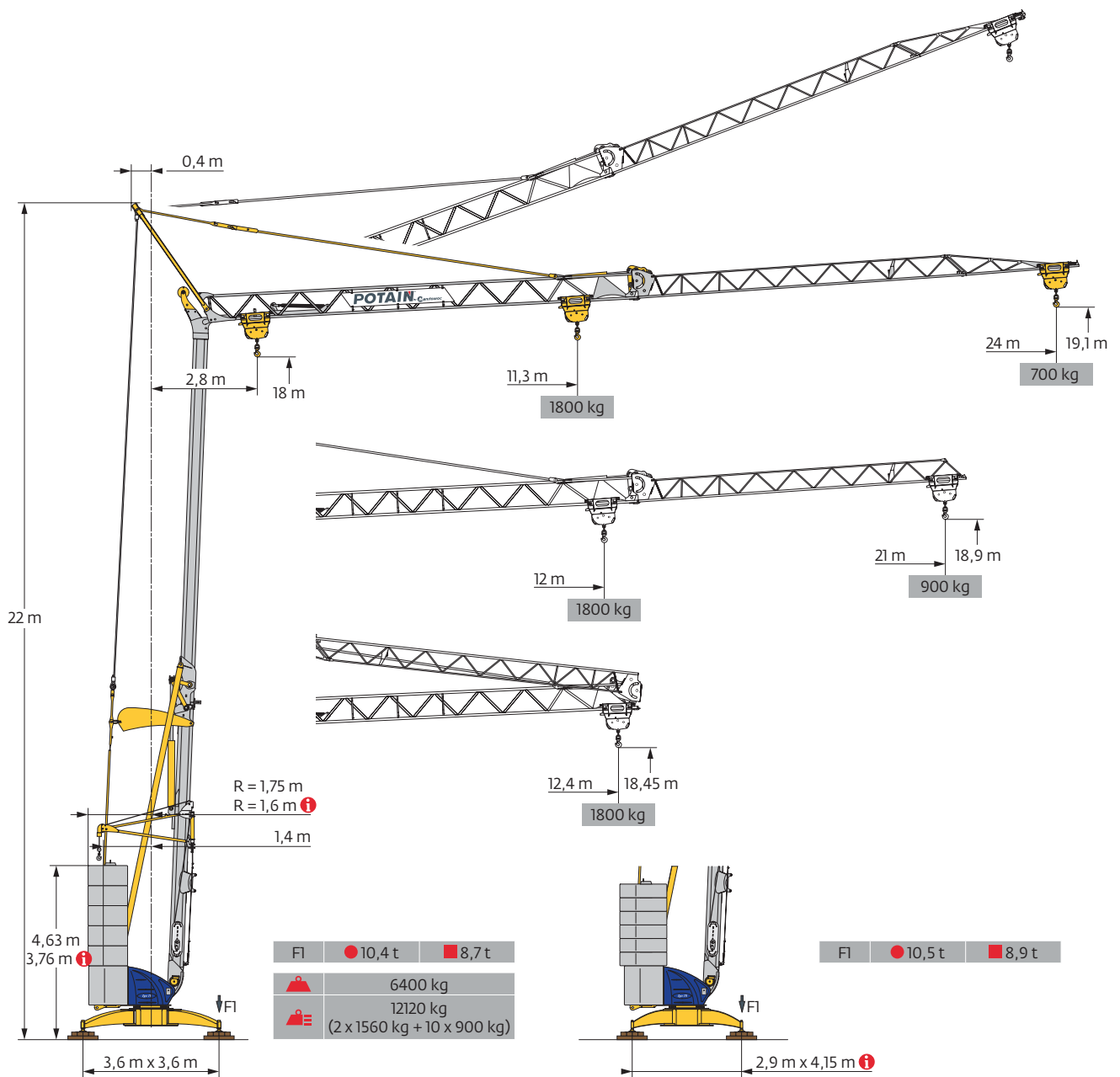
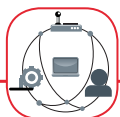


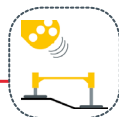
# Potain Igo 18



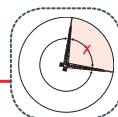
SmartCom



Hydraulic  
Leveling

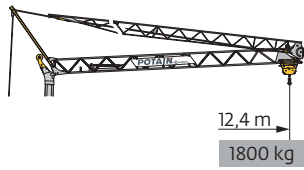


Top Zone



EN 14439 C25-D25  
EN 14439 C50-D50  
FEM 1.001-A3

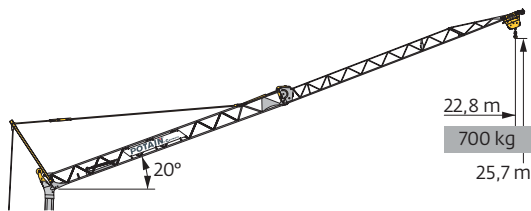
Courbes de charges / Lastkurven / Load curves / Curvas de cargas / Curve di carico  
 Curvas de carga / Кривые нагрузок



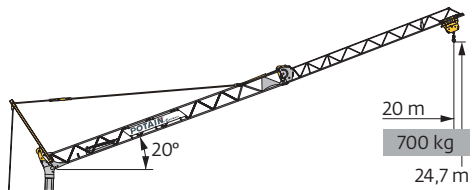
|      |     |   |      |    |
|------|-----|---|------|----|
| 24 m | 2,8 | ▶ | 12,4 | m  |
|      |     |   | 1800 | kg |
| 21 m | 2,8 | ▶ | 12,4 | m  |
|      |     |   | 1800 | kg |



|     |   |      |      |      |      |      |      |      |      |      |     |     |     |     |     |    |
|-----|---|------|------|------|------|------|------|------|------|------|-----|-----|-----|-----|-----|----|
| 2,8 | ▶ | 11,3 | 12   | 13   | 14   | 15   | 16   | 17   | 18   | 19   | 20  | 21  | 22  | 23  | 24  | m  |
|     |   | 1800 | 1665 | 1505 | 1375 | 1260 | 1165 | 1080 | 1005 | 940  | 880 | 830 | 780 | 740 | 700 | kg |
| 2,8 | ▶ |      | 12   | 13   | 14   | 15   | 16   | 17   | 18   | 19   | 20  | 21  |     |     |     | m  |
|     |   |      | 1800 | 1630 | 1485 | 1365 | 1260 | 1170 | 1090 | 1020 | 960 | 900 |     |     |     | kg |









|      |     |   |      |    |
|------|-----|---|------|----|
| 24 m | 2,8 | ▶ | 22,8 | m  |
|      |     |   | 700  | kg |



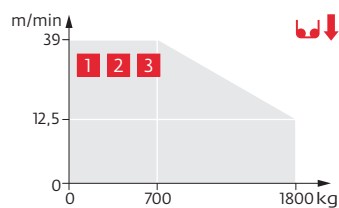
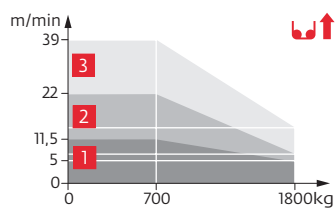
|      |     |   |     |    |
|------|-----|---|-----|----|
| 21 m | 2,8 | ▶ | 20  | m  |
|      |     |   | 700 | kg |

Mécanismes / Triebwerke / Mechanisms / Mecanismos / Meccanismi  
 Mecanismos / Механизмы

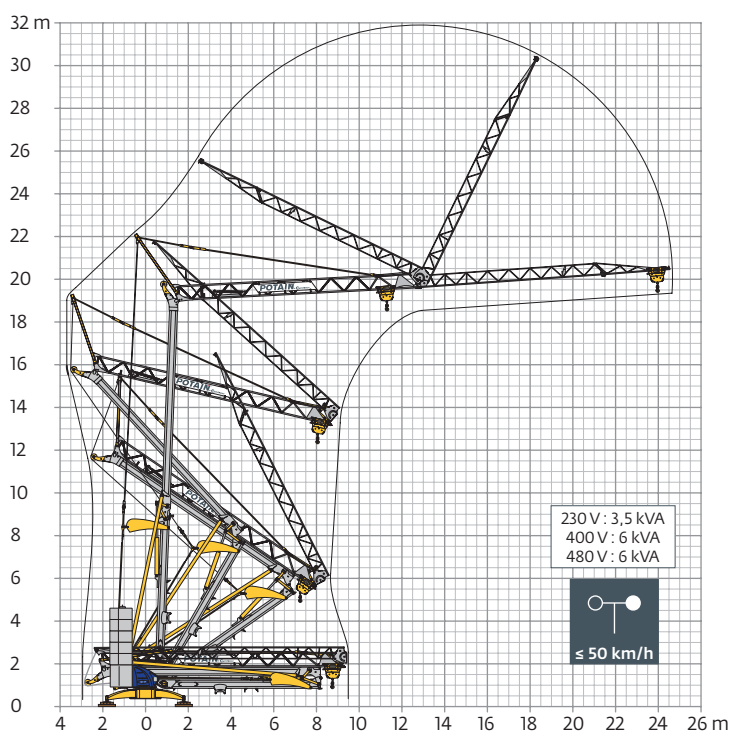
| 230 V - 50 Hz<br>400 V - 50 Hz<br>480 V - 60 Hz                                   |                       |  |  |      |     | ch - PS<br>hp | kW  |
|---|-----------------------|--|---|------|-----|---------------|-----|
|  | <b>8 LVF 9 Optima</b> | 230 V $\nabla$ m/min $\updownarrow$ 3,5 $\uparrow$ 5 $\downarrow$ 12,5 $\uparrow$ 11,5 $\downarrow$ 39 |   |      |     | 3,3           | 2,4 |
|   |                       | 20 A <b>1</b> kg   | 1800  | 1800 | 700 |               |     |
|   |                       | 230 V $\nabla$ m/min $\updownarrow$ 3,5 $\uparrow$ 6,5 $\downarrow$ 12,5 $\uparrow$ 22 $\downarrow$ 39 |   |      |     | 5,2           | 3,8 |
|   |                       | 32 A <b>2</b> kg   | 1800  | 1800 | 700 |               |     |
|   |                       | 400 V $\nabla$ m/min $\updownarrow$ 3,5 $\downarrow$ 12,5 $\updownarrow$ 39                            |   |      |     | 7,5           | 5,5 |
|   |                       | 480 V <b>3</b> kg  | 1800  | 1800 | 700 |               |     |
|  | <b>1 DVF 4</b>        | m/min  | 14 - 28   |      |     | 1,5           | 1,1 |
|  | <b>RVF 20</b>         | tr/min<br>U/min<br>rpm   | 0 → 1   |      |     | 1,5           | 1,1 |

|  IEC 60204-32 |  kVA |
|--|---|
| 230 V (+10% -10%) 50 Hz<br>400 V (+10% -10%) 50 Hz<br>480 V (+6% -10%) 60 Hz                   | 230 V 20 A : 4,6 kVA<br>230 V 32 A : 7,4 kVA<br>400 V / 480 V : 11 kVA                  |

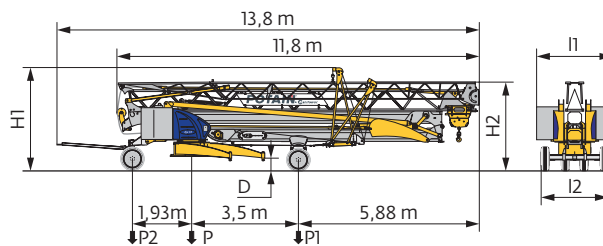
**8 LVF 9 Optima**



Montage / Montage / Erection / Montaje / Montaggio  
 Montagem / Монтаж

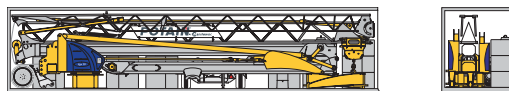


Transport / Transport / Transport / Transporte / Trasporto  
Transporte / Транспортировка



|              | km/h | D (m)     | H1 (m)    | H2 (m)    | l1 (m)   | l2 (m) | P (kg) | P1 (kg) | P2 (kg) |
|--------------|------|-----------|-----------|-----------|----------|--------|--------|---------|---------|
| DS62/S81     | 10   | 0,33/0,18 | 3,41/3,26 | 2,98/2,83 | 2,48/2,2 | 2,2    | 10000  | 5800    | 4200    |
| DS65/S65     | 25   | 0,33/0,18 | 3,41/3,26 | 2,98/2,83 | 2,48/2,2 | 2      | 10310  | 5920    | 4390    |
| ..... /..... |      |           |           |           |          |        |        |         |         |

Conteneur High Cube 40' / Container High Cube 40' / Conteneur High Cube 40' / Contenedor High Cube 40'  
Container High Cube 40' / Contentor High Cube 40' / 40-футовый контейнер повышенной вместимости High Cube



**FR**

**DE**

**EN**

**ES**

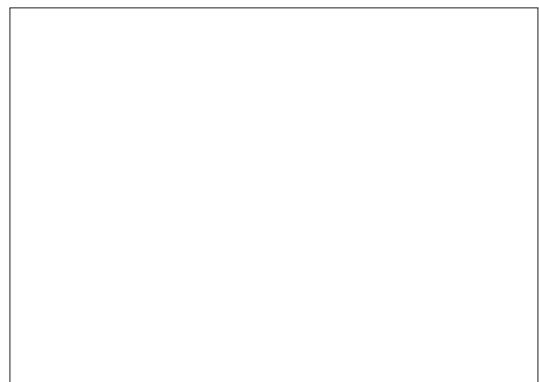
**IT**

**PT**

**RU**

|     |   |   |   |  |   |  |  |
|-----|---|---|---|--|---|--|--|
| R   | Rayon de giration   | Schwenk radius  | Rear slewing radius   | Radio de giro  | Raggio di rotazione   | Raio de rotação  | Задний габарит   |
| i   | Nous consulter  | Auf Anfrage   | Consult us  | Consultarnos   | Consultateci  | Consultar-nos  | Проконсультируйтесь у нас  |
| ●   | Réactions en service  | Reaktionskräfte in Betrieb  | Reactions in service  | Reacciones en servicio   | Reazioni in servizio  | Reacções em serviço  | Реакция при работе   |
| ■   | Réactions hors service  | Reaktionskräfte außer Betrieb   | Reactions out of service  | Reacciones fuera de servicio   | Reazioni fuori servizio   | Reacções fora de serviço   | Реакция в покое  |
| ▲   | Poids à vide, sans lest, sans trains de transport, avec flèche maxi. et hauteur standard. | Gewicht ohne Last, ohne Ballast, ohne Transportachsen, mit max. Auslager und Standardhöhe | Weight without load, without ballast, without transport axes, with max. jib and standard height | Peso en vacío, sin lastre, sin trenes de transporte con flecha y altura estandar | Peso a vuoto, senza zavorra, senza assali di trasporto, con braccio max e altezza standard. | Peso em vazio, sem lastro, sem eixos de transporte com lança máxima e altura standard. | Вес без груза, без балласта, без осей для транспортировки, с максимальным вылетом стрелы и стандартной высотой |
| ■   | Poids total du lest   | Ballast-Gesamtgewicht   | Total ballast weight  | Peso total del lastre  | Peso totale della zavorra   | Peso total do lastro   | Общий вес балласта   |
| □   | Équipements standards   | Standardausrüstungen  | Standard equipment  | Equipamiento de serie  | Equipaggiamento standar   | Equipamento de série   | Стандартное оборудование   |
| □   | Équipements optionnels  | Sonderausrüstungen  | Options   | Equipamiento opcional  | Equipaggiamento in opzione  | Equipamento opcional   | Дополнительное оборудование (опция)  |
| ●   | Levage  | Heben   | Hoisting  | Elevación  | Sollevamento  | Elevação   | Подъем   |
| ●   | Distribution  | Katzfahren  | Trolleying  | Distribución   | Distribuzione   | Distribuição   | Перемещение по стреле  |
| ●   | Orientation   | Schwenken   | Slewing   | Orientación  | Rotazione   | Rotação  | Поворот  |
| /// | 50 Hz Monophasé   | 50 Hz Einphasige  | 50 Hz Single phase  | 50 Hz Monofasica   | 50 Hz Monofase  | 50 Hz monofásica   | Однофазное напряжение 50Hz   |
| kVA | Puissance requise   | Erforderliche Leistung  | Required power  | Potencia Necesaria   | Potenza richiesta   | Potência Necessária  | Потребляемая мощность  |

**!** Document commercial non contractuel. Pour toute information technique se référer à la notice correspondante. Unverbindliches Vertriebsdokument. Für technische Informationen, siehe die entsprechenden Anweisungen. This commercial document is not legally binding. For any technical information, please refer to the corresponding instructions. Documento comercial no contractual. Para cualquier información técnica, ver la noticia correspondiente. Documento commerciale non vincolante, per tutte le informazioni tecniche fare riferimento al catalogo istruzioni. Documento comercial não contratual. Para qualquer informação técnica complementar consultar as respectivas instruções. Этот коммерческий документ не является юридически обязательным. Для получения технической информации, см. соответствующие инструкции.



www.manitowoc.com

**Americas**  
Manitowoc, Wisconsin, USA  
Tel: +1 920 684 6621  
Fax: +1 920 683 6277

**Europe, Middle East, Africa**  
Dardilly, France  
Tel: +33 (0)4 72 18 20 20  
Fax: +33 (0)4 72 18 20 00

**Shady Grove, Pennsylvania, USA**  
Tel: +1 717 597 8121  
Fax: +1 717 597 4062

**China**  
Shanghai, China  
Tel: +86 21 6457 0066  
Fax: +86 21 6457 4955

**Greater Asia-Pacific**  
Singapore  
Tel: +65 6264 1188  
Fax: +65 6862 4040