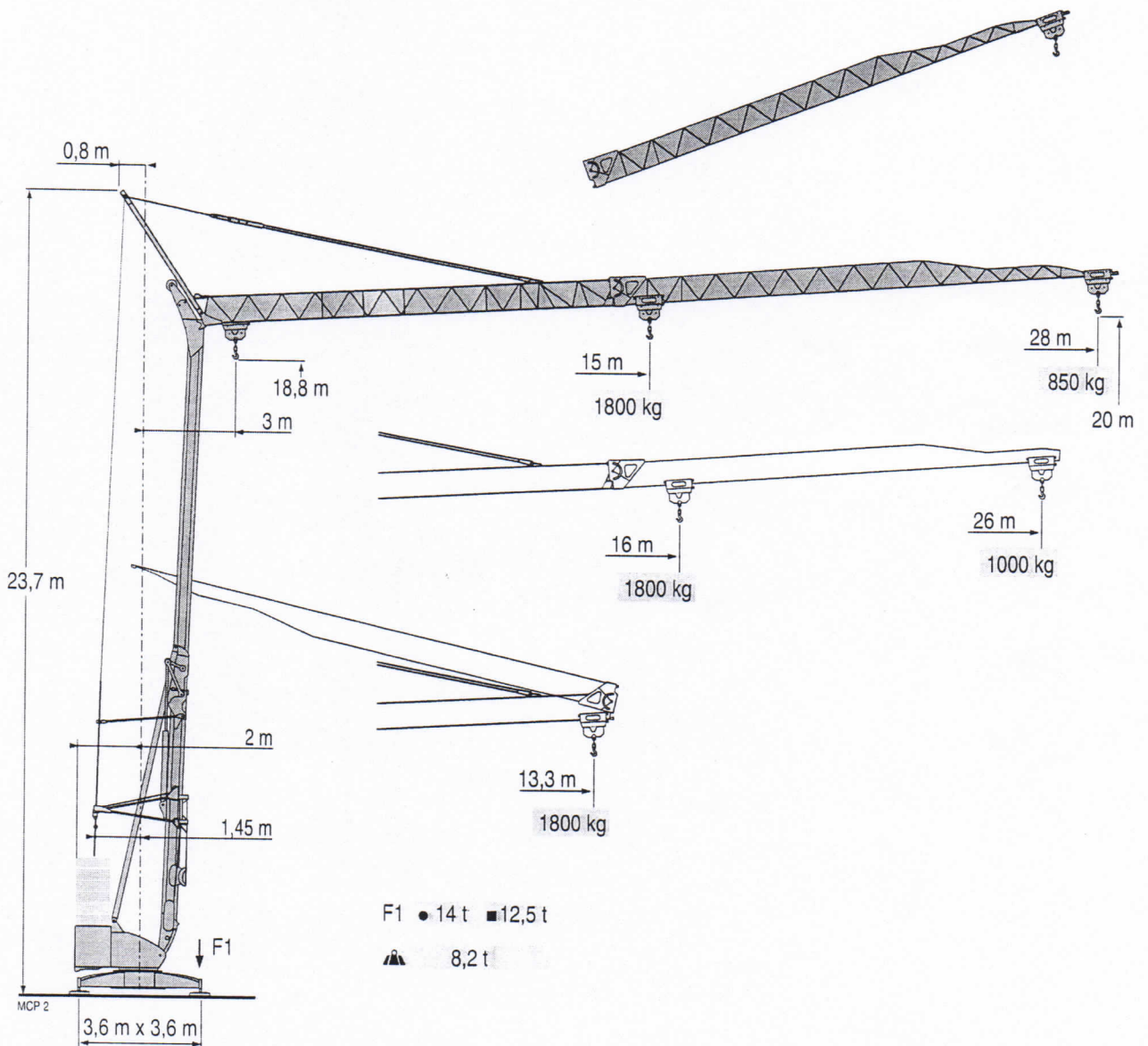


# POTAIN

## Igo 22



Courbes de charges  
Lastkurven  
Load diagrams  
Curvas de cargas  
Curve di carico  
Curva de cargas



VCP 2

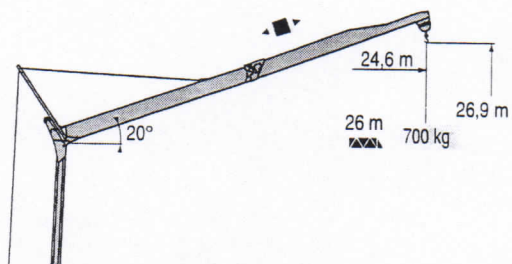
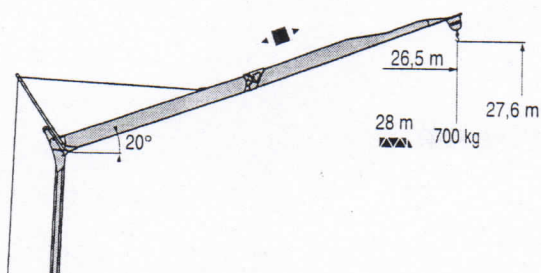
28 m	3	▶	13,3 m	15	16	17	18	19	20	21	22	23	24	25	26	27	28	m
▲▲▲			1800 kg	1800	1670	1555	1450	1360	1275	1205	1140	1080	1025	975	930	890	850	kg

26 m	3	▶	13,3 m	16	17	18	19	20	21	22	23	24	25	26	m
▲▲▲			1800 kg	1800	1665	1555	1455	1370	1290	1220	1160	1100	1050	1000	kg

go 22

Flèche relevée  
Ausleger in Steilstellung  
Luffing jib  
Flecha izada  
Braccio impennato  
Lança inclinada



Igo 22

POTAIN

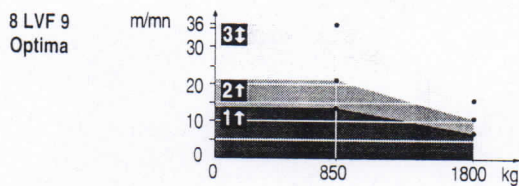
F	D	GE	E	I	P
Chariot distributeur	Verfahrbare Laufkatze	Traversing trolley	Carro distribuidor	Carrellino distributore	Carro distribuidor
● Reactions en service	Reaktionskräfte in Betrieb	Reactions in service	Reacciones en servicio	Reazioni in servizio	Reacções em serviço
■ Reactions hors service	Reaktionskräfte außer Betrieb	Reactions out of service	Reacciones fuera de servicio	Reazioni fuori servizio	Reacções fora de serviço
	Ohne Last, Ballast (und Transportachse), mit Maximalausleger und Maximalhöhe.	Without load, ballast (or transport axles), with maximum jib and maximum height.	Sin carga, sin lastre, (ni tren de transporte), flecha y altura maxima.	A vuoto, senza zavorra (ne assali di trasporto) con braccio massimo e altezza massima.	Sem carga (nem trem de transporte)- sem lastro com lança e altura máximas.



Mécanismes  
Antriebe  
Mechanisms  
Mecanismos  
Meccanismi  
Mecanismos

VCP 2

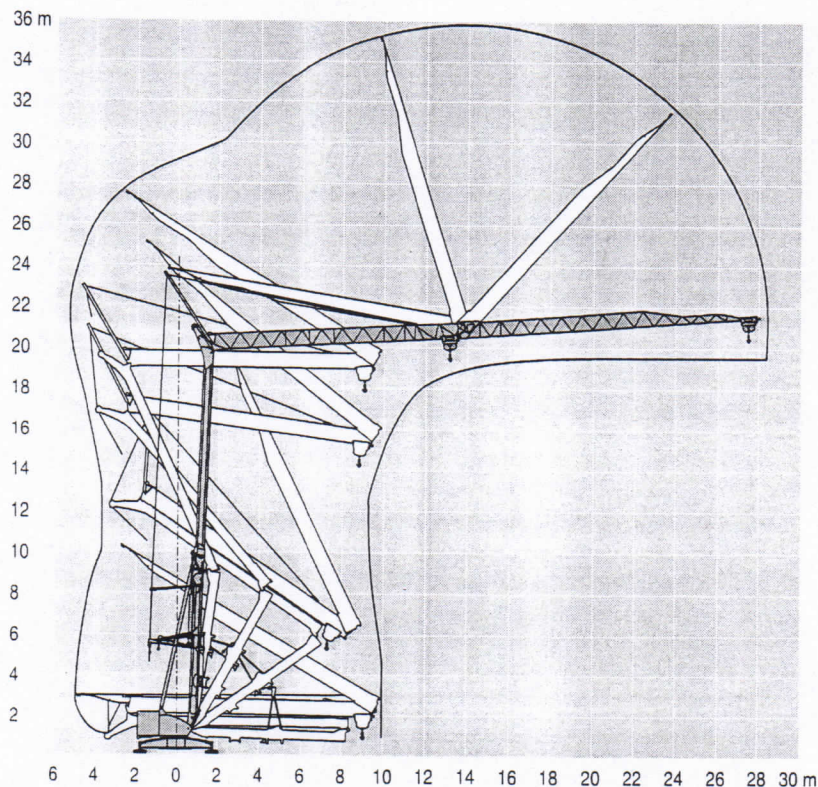
						ch - PS hp	kW	
▲ ▼	8 LVF 9 Optima	230 V  20 A <b>1</b>	m/min kg	↑ 3,5 ↓ 3,5 1800	↑ 7 ↓ 16 1800	↑ 14 ↓ 36 850	3,3	2,4
		230 V  32 A <b>2</b>	m/min kg	↑ 3,5 ↓ 3,5 1800	↑ 11 ↓ 16 1800	↑ 21 ↓ 36 850	5,2	3,8
		400 V <b>3</b>	m/min kg	↓ 3,5 1800	↓ 16 1800	↓ 36 850	7,5	5,5
◀ ▶	1 DVF 4	-	m/min	14 → 36 (0 → 850 kg) - 14 → 28 (850 → 1800 kg)			1,5	1,1
⊙	RVF 31	-	tr/min U/min rpm	0 → 0,8			2	1,5
CEI 38		IEC 38		<b>kVA</b>				
230 V (+6% -10%) 50 Hz - 60 HZ		400 V (+6% -10%) 50 Hz		230 V 20 A : 4,6 kVA 230 V 32 A : 7,4 kVA		2000/14		
480 V (+6% -10%) 60 Hz				400 V : 11 kVA				
				480 V : 11 kVA				



go 22

Montage  
Montage  
Erection  
Montaje  
Montaggio  
Montagem

VCP 1



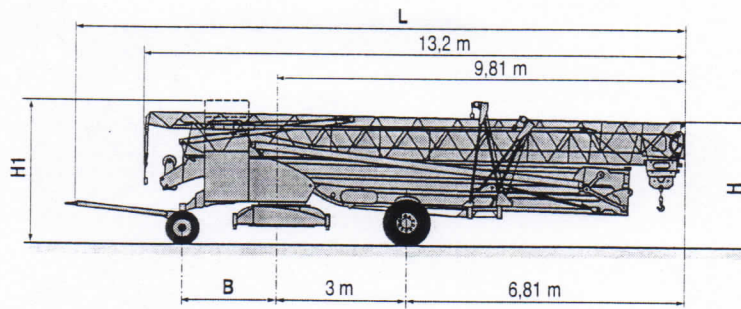
Igo 22

**POTAIN**

<b>F</b>	<b>D</b>	<b>GE</b>	<b>E</b>	<b>I</b>	<b>P</b>
Levage	Heben	Hoisting	Elevarción	Sallevamento	Elevação
Distribution	Katzfahren	Trolleying	Distribución	Distribuzione	Distribuição
Orientation	Schwenken	Slewing	Orientación	Rotazione	Rotação
50 Hz Monophase	50 Hz Einphasige	50 Hz Single phase	50 Hz Monofásica	50 Hz Monofase	50 Hz monofásica
Conforme aux directives CEE sur le niveau acoustique	Gemäss EWG-Richtlinien für den Schall-Leistungspegel	In compliance with the EEC Instructions on noise level	Conforme con las directivas CEE sobre el nivel acustico	Conforme alle direttive CEE sul livello acustico	Conforme as directivas CEE sobre o nivel acustico

- Transport DS51/S70 ○
- Transport DS61/S80 ○
- Transporte DS61/S120 ○
- Trasporto DS61/S125
- Transporte DJ80/S120 ○
- DJ80/S125
- DJ100/S120
- DJ105/S125
- DJ126M/S125

MCP 2



	L (m)	B (m)	H (m)	H1 (m)
DS51/S70	14,48	2,35	3,03/3,18	-
DS61/S80	14,77	2,45	3,18	-
DS61/S120	14,77	2,45	3,03/3,18	-
DS61/S125	14,77	2,45	3,03/3,18	-
DJ80/S120	14,77	2,45	3,05/3,20	-
DJ80/S125	14,77	2,45	3,05/3,20	-
DJ100/S120	14,77	2,45	3,05/3,20	3,21/3,36
DJ105/S125	14,77	2,45	3,05/3,20	3,21/3,36
DJ126M/S125	14,77	2,45	3,20	3,34

go 22

-   
 ○ Chantier
-   
 Baustelle
-   
 Site
-   
 Obra
-   
 Cantiere
-   
 Estaleiro



Document commercial non contractuel. Pour toute information technique se référer à la notice correspondante

Unverbindliches Vertriebsdokument. Für technische Informationen, siehe die entsprechenden Anweisungen.

This commercial document is not legally binding. For any technical information, please refer to the corresponding instructions.

Documento comercial no contractual. Para cualquier información técnica, ver la noticia correspondiente.

Documento commerciale non vincolante. Per tutte le informazioni tecniche fare riferimento al catalogo istruzioni

Documento comercial não contratual. Para qualquer informação técnica complementar consultar as respectivas instruções

**Manitowoc**  
Crane CARE

**POTAIN**   
Manitowoc Crane Group



**Americas**  
Tel: +1 920 683 6322  
Tel: +1 717 597 8121

**Europe - Middle East - Africa**  
Tel: +(33) 4 72 81 50 00  
Tel: +(44) 191 565 6281

**Asia - Pacific**  
Tel: +(65) 6861 7133  
Fax: +(65) 6862 4142

www.manitowoccrane.com

18, rue de Charbonnières - B.P.173  
69132 ECULLY Cedex - France

Tél. : (33) 4 72 18 20 20  
Fax. : (33) 4 72 18 20 00  
www.manitowoccrane.com www.potain.com

**Igo 22**  
Réf. 2005 05 MCP 3

Copyright.Reproduction interdite © POTAIN 2005

Réalisation Sedoc