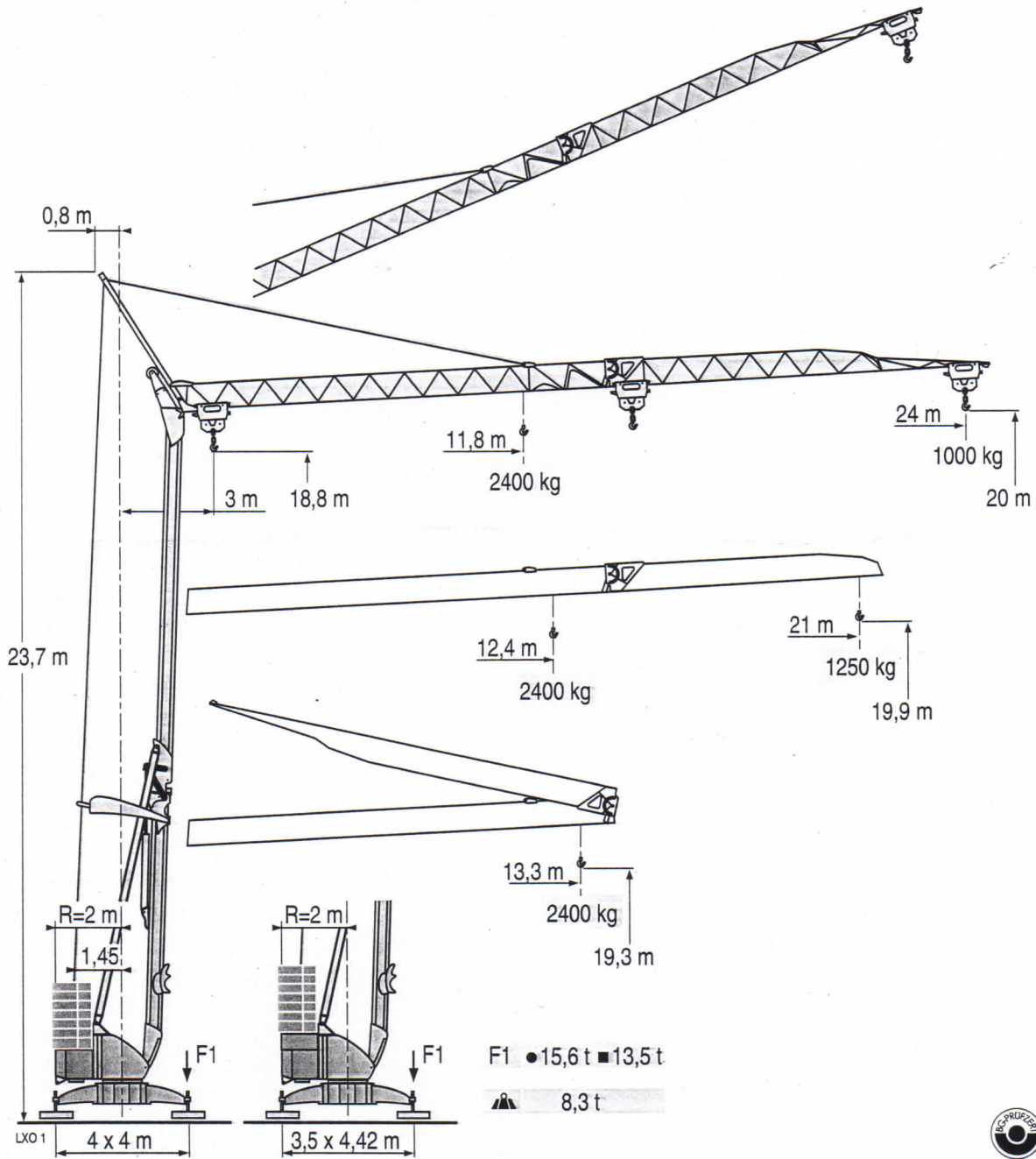


POTAIN

Igo 24



CE FEM 1.001-A3

Courbes de charges

Lastkurven

Load diagrams

Curvas de cargas	24 m	3	▶	13,3 m	11,8	12	13	14	15	16	17	18	19	20	21	22	23	24 m
Curve di carico				2400 kg	2400	2355	2130	1945	1785	1650	1530	1425	1335	1255	1180	1115	1055	1000 kg
Curva de cargas	21 m	3	▶	13,3 m	12,4	13	14	15	16	17	18	19	20	21 m				
Curva di carico				2400 kg	2400	2250	2055	1890	1745	1620	1510	1415	1330	1250 kg				

LX01

Flèche relevée

Ausleger in Steilstellung

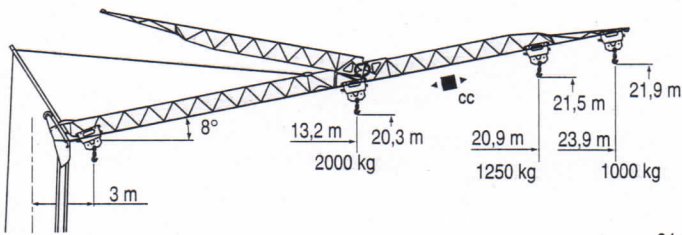
Luffing jib

Flecha izada

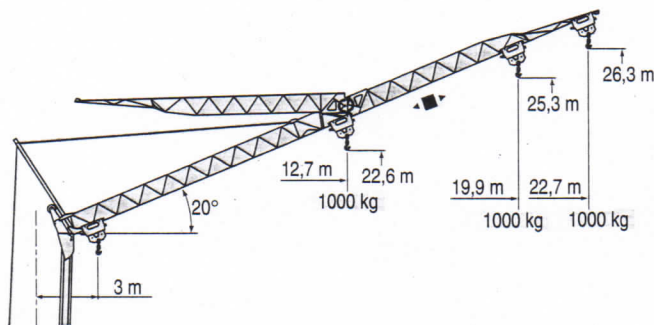
Braccio impennato

Lança inclinada

LX01



24 m	3	▶	13,6	15	16	17	18	19	20	22	23,9 m
			2000	1775	1640	1525	1420	1330	1245	1110	1000 kg
21 m	3	▶	14,2	15	16	17	18	19	20,9 m		
			2000	1875	1735	1610	1500	1405	1250 kg		



24 m	3	▶									22,7 m
											1000 kg
21 m	3	▶									19,9 m
											1000 kg

Igo 24

POTAIN

F

Chariot distributeur
Chariot distributeur et courbes de charges

Réactions en service

Réactions hors service

A vide sans lest (ni train de transport) avec flèche et hauteur maximum.

D

Verfahrbare Laufkatze

Verfahrbare Laufkatze und Lastkurven

Reaktionskräfte in Betrieb

Reaktionskräfte außer Betrieb

Ohne Last, Ballast (und Transportachse), mit Maximalausleger und Maximalhöhe.

GB

Traversing trolley

Traversing trolley and load diagrams

Reactions in service

Reactions out of service

Without load, ballast (or transport axes), with maximum jib and maximum height.

E

Carro distribuidor

Carro distribuidor y curvas de cargas

Reacciones en servicio

Reacciones fuera de servicio

Sin carga, sin lastre, (ni tren de transporte), flecha y altura máxima.

I

Carrellino distributore

Carrellino distributore e curve di carico

Reazioni in servizio

Reazioni fuori servizio

A vuoto, senza zavorra (ne assali di trasporto) con braccio massimo e altezza massima.

P

Carro distribuidor

Carro distribuidor e curva de cargas







Reacções em serviço

Reacções fora de serviço

Sem carga (nem trem de transporte)- sem lastro com lança e altura máximas.

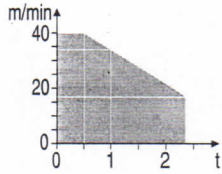


Mécanismes
Antriebe
Mechanisms
Mecanismos
Meccanismi
Mecanismos

								ch - PS hp	kW
	10 LVF 12 Optima	m/min kg	2 2400	10 2400	17 2400	34 1000	40 500	10	7,5
	2 DVF5	m/min	15 - 38 (0 → 1000 kg)		15 - 30 (1000 → 2400 kg)			2	1,5
	RVF2	tr/min U/min rpm	0 → 0,8					2	1,5
CEI 38		IEC 38	kVA						
400 V (+6% -10%) 50 Hz			10 LVF 12 : 14 kVA			2000/14			

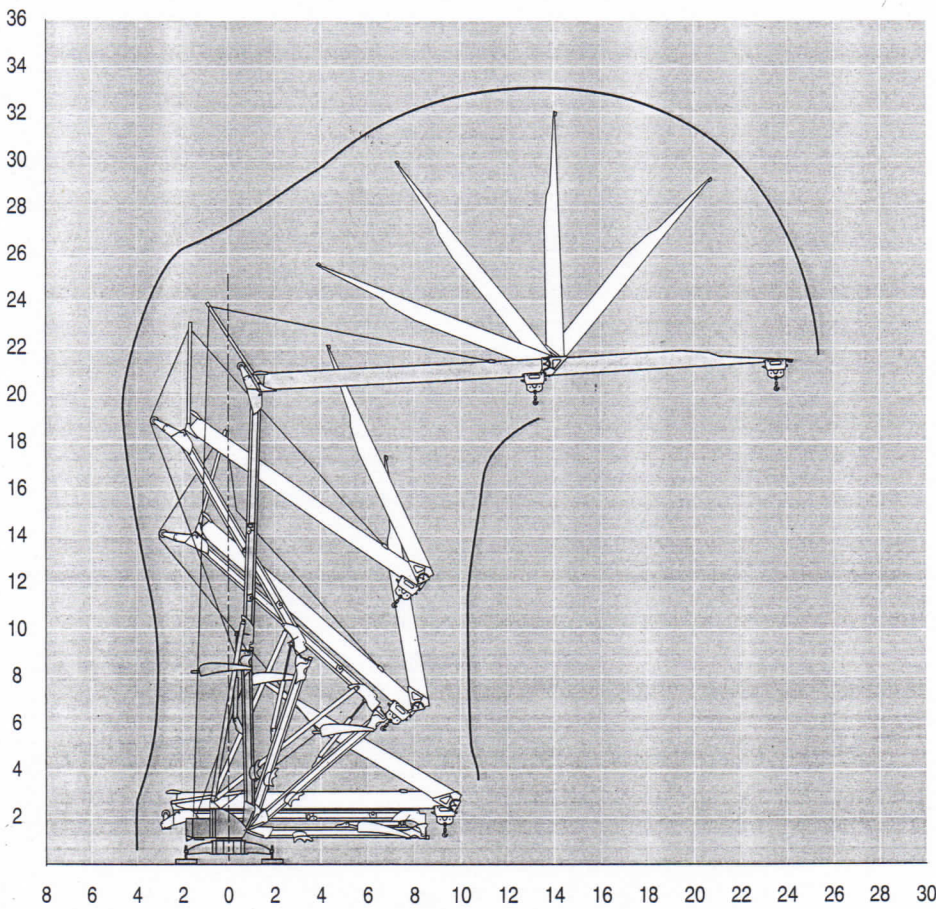
LXO 1

10 LVF 12
Optima



Montage
Montage
Erection
Montaje
Montaggio
Montagem

LXO 1



Igo 24

POTAIN 

F



Levage
Distribution
Orientation

Conforme aux directives CEE
sur le niveau acoustique

D

Heben
Katzfahren
Schwenken

Gemäss EWG-Richtlinien für
den Schall-Leistungspegel

GB

Hoisting
Trolleying
Slewing

In compliance with the EEC
Instructions on noise level

E

Elevación
Distribución
Orientación

Conforme con las directivas
CEE sobre el nivel acustico

I

Sollevamento
Distribuzione
Rotazione

Conforme alle direttive CEE
sul livello acustico

P

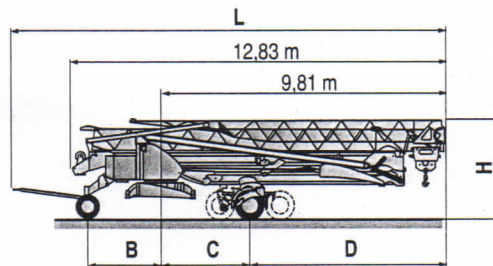
Elevação
Distribuição
Rotação

Conforme as directivas CEE
sobre o nível acústico

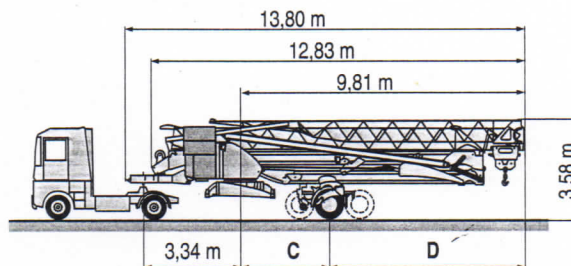
Transport
Transport
Transport
Transporte
Trasporto
Transporte

LXO 2

		L (m)	B (m)	C (m)	D (m)	H (m)
DS61/S120	○					
DS61/S125	DS61/S120	14,9	2,45	3	6,81	3,05/3,2
DS61/S125	DS61/S125	14,9	2,45	3	6,81	3,05/3,2
DJ80/S120	○					
DJ80/S125	DJ80/S120	14,9	2,45	3	6,81	3,1
DJ80/S125	DJ80/S125	14,9	2,45	3	6,81	3,1
DJ100/S120	DJ100/S120	15,33	2,45	3	6,81	3,1/3,23
DJ100/S120	DJ105/S125	15,33	2,45	3	6,81	3,1/3,23
DJ105/S125	DJ126M/S125	15,35	2,45	3	6,81	3,2
DJ105/S125	DJ126M/S215M	16,14	3,24	5,37	4,44	3,55
DJ126M/S125						
DJ126M/S215M						



		C (m)	D (m)
SL122/J215M			
SL121/J135	SL122/J215M	5,37	4,44
SL121/S215M	SL121/J135	3	6,81
SL121/S215M	SL121/S215M	5,37	4,44



F

D

GB

E

I

P

○ Chantier

Baustelle

Site

Obra

Cantiere

Estaleiro



Document commercial non contractuel. Pour toute information technique se référer à la notice correspondante

Unverbindliches Vertriebsdokument. Für technische Informationen, siehe die entsprechenden Anweisungen.

This commercial document is not legally binding. For any technical information, please refer to the corresponding instructions.

Documento commercial non contractuel. Para cualquier información técnica, ver la noticia correspondiente.

Documento commerciale non vincolante, per tutte le informazioni tecniche fare riferimento al catalogo istruzioni

Documento comercial não contratual. Para qualquer informação técnica complementar consultar as respectivas instruções

Manitowoc
Crane CARE

POTAIN
Manitowoc Crane Group



18, rue de Charbonnières - B.P.173
69132 ECULLY Cedex - France

TéL. : (33) 4 72 18 20 20
Fax. : (33) 4 72 18 20 00

www.manitowoccrane.com www.potain.com

Americas

Tel : +1 920 683 6322
Tel : +1 717 597 8121

Europe - Middle East - Africa

Tel : +(33) 4 72 81 50 00
Tel : +(44) 191 565 6281

Asia - Pacific

Tel: +(65) 6861 7133
Fax: +(65) 6862 4142

www.manitowoccrane.com

Igo 24

Réf. 2003 48 LXO 2

Copyright.Reproduction interdite © POTAIN 2003

Réalisation Sedoc