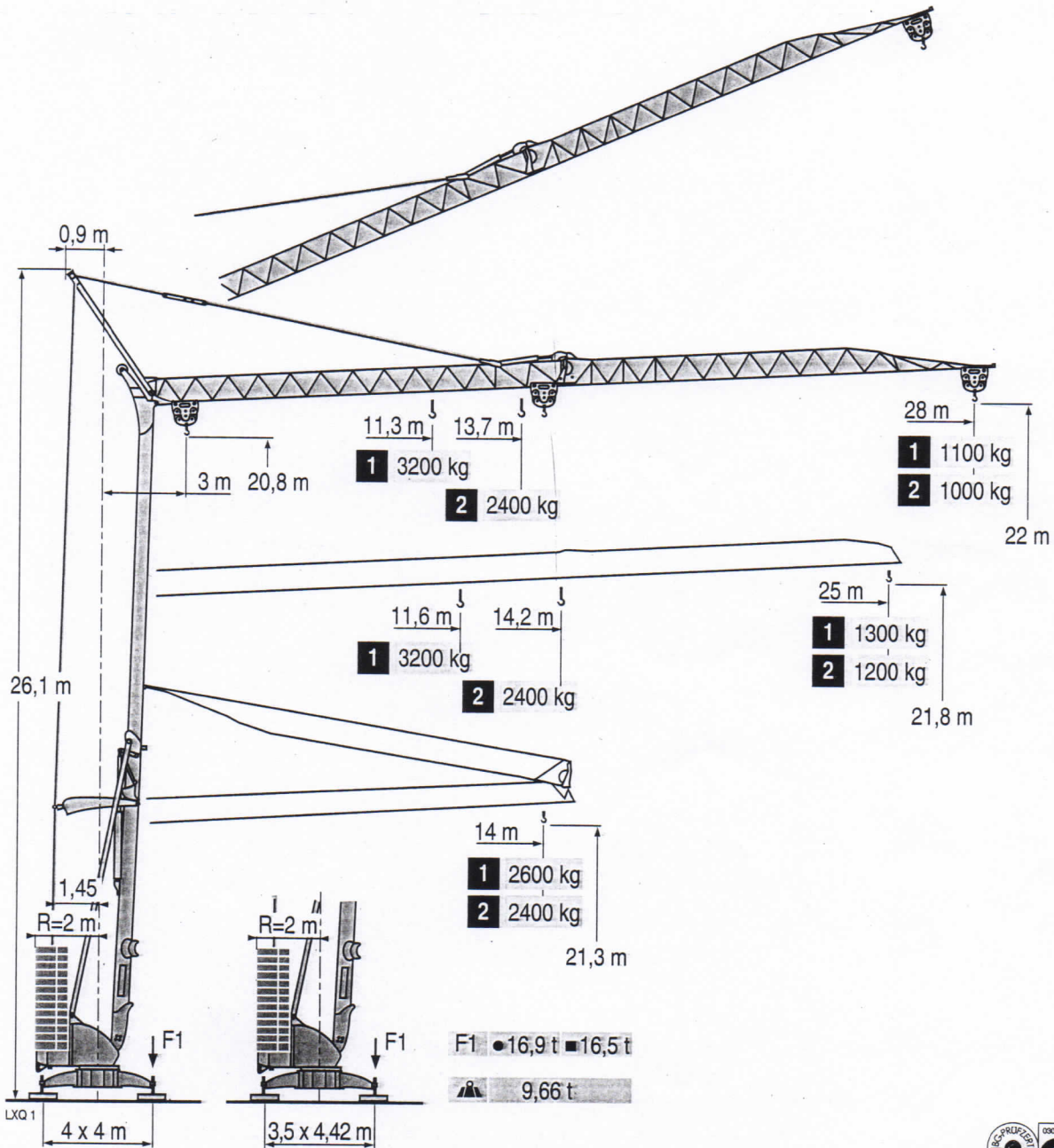


Igo 28 A



CE FEM 1.001-A3

Courbes de charges
Lastkurven
Load diagrams
Curvas de cargas
Curve di carico
Curva de cargas



1 3200 kg

28 m 3 ▶ 11,9 12 13 14 m

3200	3165	2855	2600	3200	2950	2665	2425	2220	2045	1895	1765	1645	1540	-	1450	1365	1290	1220	1160	1100	1050	1000	1600	1560	1475	1400	1325	1265	1205	1150	1100
------	------	------	------	------	------	------	------	------	------	------	------	------	------	---	------	------	------	------	------	------	------	------	------	------	------	------	------	------	------	------	------

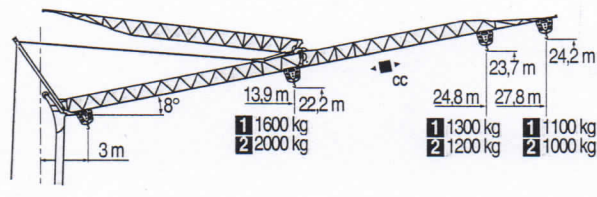
25 m 3 ▶ 11,9 12 13 14 m	3200	3165	2855	2600	3200	3045	2750	2500	2290	2115	1960	1820	1700	1595	1500	1415	1335	1265	1200	1600	1520	1440	1365	1300
--------------------------	------	------	------	------	------	------	------	------	------	------	------	------	------	------	------	------	------	------	------	------	------	------	------	------

2 2400 kg

28 m 3 ▶ 14 m	2400	2400	2340	2150	1985	1845	1720	1610	1510	1425	1345	1275	1210	1150	1095	1045	1000
---------------	------	------	------	------	------	------	------	------	------	------	------	------	------	------	------	------	------

25 m 3 ▶ 14 m	2400	2400	2240	2070	1920	1790	1675	1575	1485	1405	1330	1260	1200
---------------	------	------	------	------	------	------	------	------	------	------	------	------	------

Flèche relevée
Ausleger in Steilstellung
Luffing jib
Flecha izada
Braccio impennato
Lança inclinada

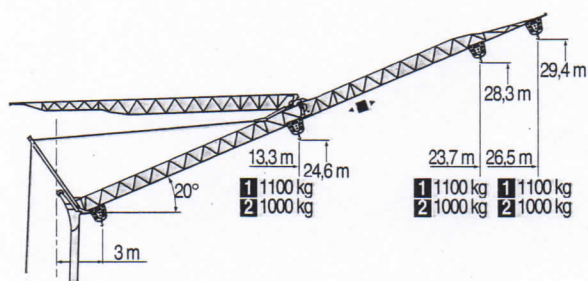


28 m 3 ▶ 19,3 20 20,4 21 22 23 24 25 26 27 27,8 m	1600	1530	-	1435	1355	1280	1210	1150	1090	1040	1000	1600	1545	1465	1385	1315	1250	1195	1140	1100
---	------	------	---	------	------	------	------	------	------	------	------	------	------	------	------	------	------	------	------	------

25 m 3 ▶ 19,8 20 20,9 21 22 23 24 24,8 m	1600	1580	-	1485	1400	1320	1250	1200	1600	1590	1500	1425	1355	1300
--	------	------	---	------	------	------	------	------	------	------	------	------	------	------

28 m 3 ▶ 15,8 17 19 21 22 23 24 25 26 27 27,8 m	2000	1830	1595	1410	1335	1265	1200	1140	1085	1035	1000
---	------	------	------	------	------	------	------	------	------	------	------

25 m 3 ▶ 16,3 17 19 21 22 23 24 24,8 m	2000	1900	1660	1470	1390	1315	1250	1200
--	------	------	------	------	------	------	------	------



28 m 3 ▶ 26,5 m	1000	1100
-----------------	------	------

25 m 3 ▶ 23,7 m	1000	1100
-----------------	------	------

28 m 3 ▶ 26,5 m	1000
-----------------	------

25 m 3 ▶ 23,7 m	1000
-----------------	------

Igo 28 A



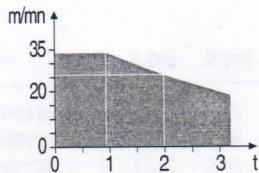
F Chariot distributeur Chariot distributeur et courbes de charges Réactions en service Réactions hors service A vide sans lest (ni train de transport) avec flèche et hauteur maximum.	D Verfahrbare Laufkatze Verfahrbare Laufkatze und Lastkurven Reaktionskräfte in Betrieb Reaktionskräfte außer Betrieb Ohne Last, Ballast (und Transportachse), mit Maximalausleger und Maximalhöhe.	GB Traversing trolley Traversing trolley and load diagrams Reactions in service Reactions out of service Without load, ballast (or transport axes), with maximum jib and maximum height.	E Carro distribuidor Carro distribuidor y curvas de cargas Reacciones en servicio Reacciones fuera de servicio Sin carga, sin lastre, (ni tren de transporte), flecha y altura máxima.	I Carrellino distributore Carrellino distributore e curva di carico Reazioni in servizio Reazioni fuori servizio A vuoto, senza zavorra (ne assali di trasporto) con braccio massimo e altezza massima.	P Carro distribuidor Carro distribuidor e curva de cargas Reações em serviço Reações fora de serviço Sem carga (nem trem de transporte)- sem lastro com lança e altura máximas.
--	---	--	--	---	---

Mécanismes
Antriebe
Mechanisms
Mecanismos
Meccanismi
Mecanismos

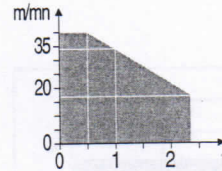
LXQ 1

												ch-PS hp	kW	
	15 LVF 10 Optima	m/min	3,6	18	37	49	66						15	11
		kg	1600	1600	1600	1100	500							
		m/min	3,6	18	37	54	66	1,8	9	19	27	33		
		kg	1600	1600	1600	1000	500	3200	3200	3200	2000	1000		
	3 DVF5	m/min	19 - 41									3	2,2	
	10 LVF 12 Optima	m/min	2	10	17	34	40						10	7,5
		kg	2400	2400	2400	1000	500							
	2 DVF5	m/min	15 - 38 (0 → 1000 kg)					15 - 30 (1000 → 2400 kg)					2	1,5
	RVF2-30	tr/min U/min rpm	0 → 0,8									2	1,5	
CEI 38		IEC 38		kVA										
400 V (+6% -10%) 50 Hz		15 LVF 10 : 20 kVA 10 LVF 12 : 14 kVA					2000/14							

15 LVF 10
Optima

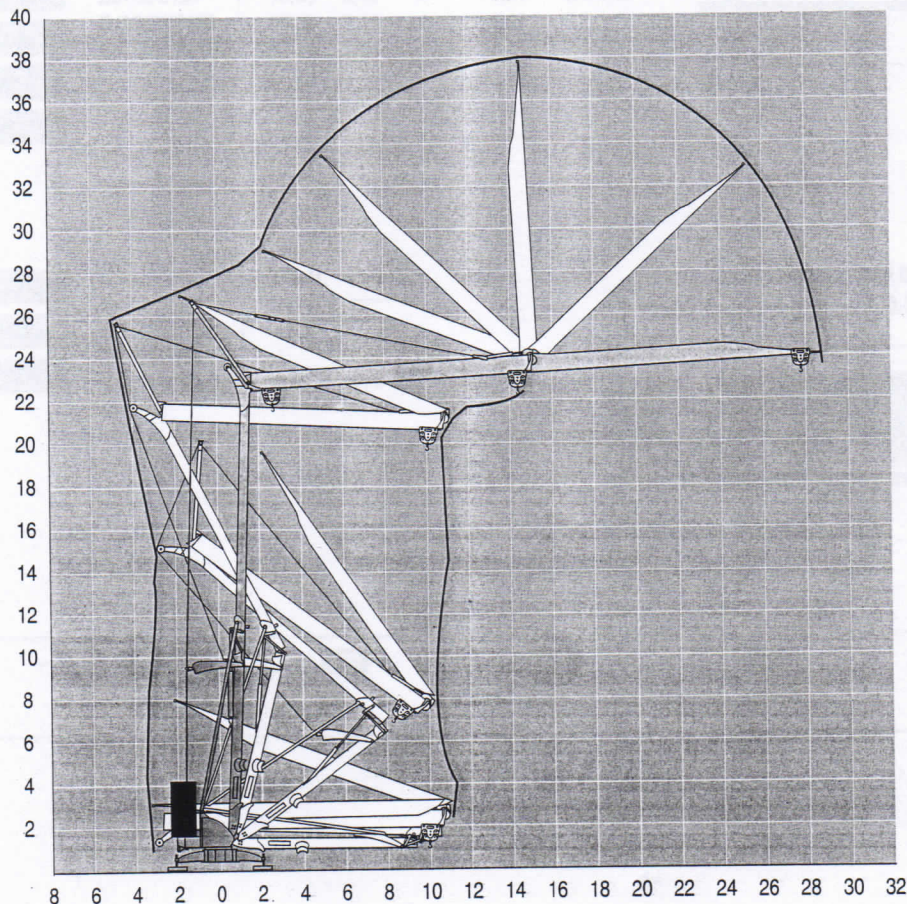


10 LVF 12
Optima



Montage
Montage
Erection
Montaje
Montaggio
Montagem

LXQ 1



Igo 28 A

POTAIN

F 	D 	GB 	E 	I 	P
Levage	Heben	Hoisting	Elevación	Sollevamento	Elevação
Distribution	Katzfahren	Trolleying	Distribución	Distribuzione	Distribuição
Orientation	Schwenken	Slewing	Orientación	Rotazione	Rotação
Conforme aux directives CEE sur le niveau acoustique	Gemäss EWG-Richtlinien für den Schall-Leistungspegel	In compliance with the EEC Instructions on noise level	Conforme con las directivas CEE sobre el nivel acustico	Conforme alle direttive CEE sul livello acustico	Conforme as directivas CEE sobre o nível acústico