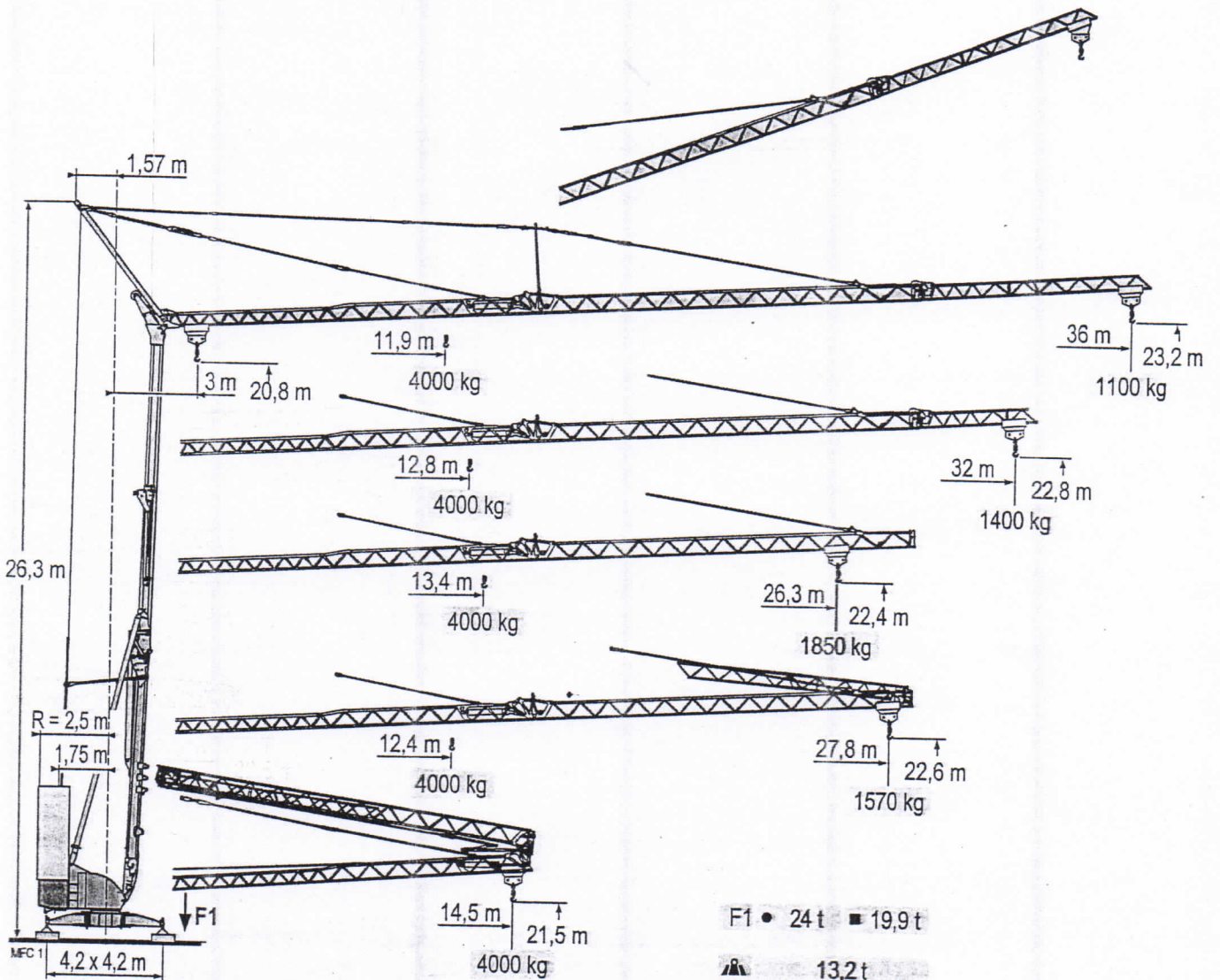
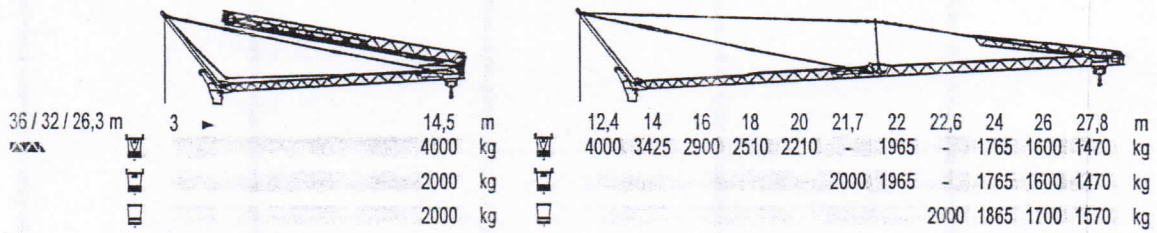


POTAIN

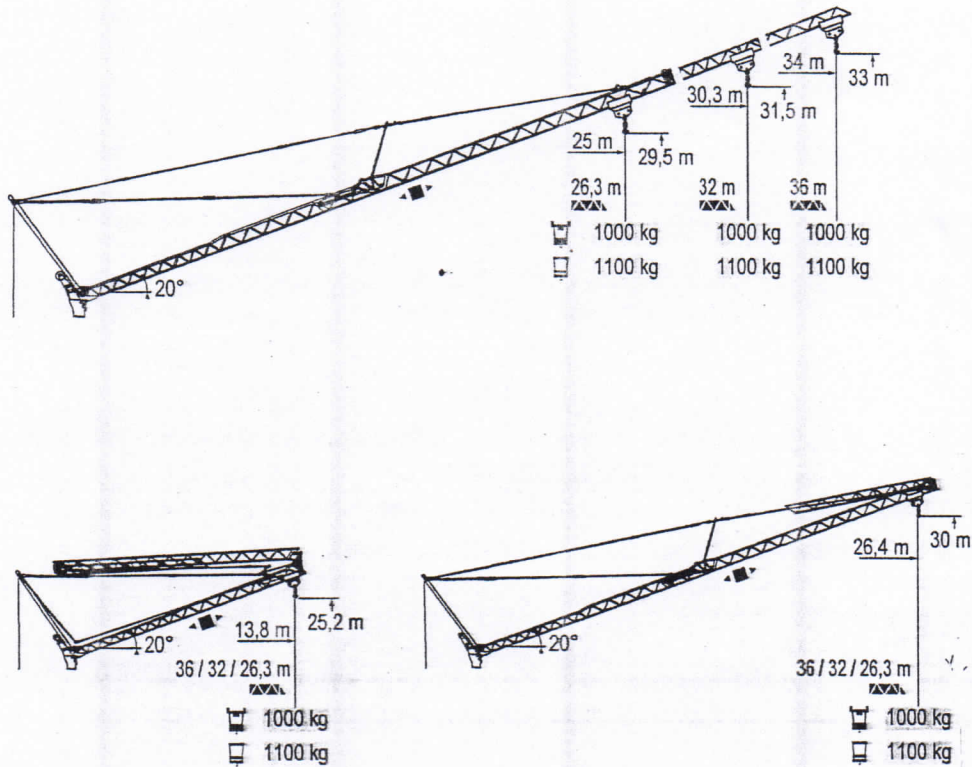
Igo 42



| | | | | | | | | | | | | | | | | | | | |
|--------------------|--------|---|------|------|------|------|------|------|------|------|------|------|------|------|------|------|------|------|----|
| Courbes de charges | 36 m | 3 | 11,9 | 12 | 14 | 16 | 18 | 20 | 20,8 | 21,8 | 22 | 24 | 26 | 28 | 30 | 32 | 34 | 36 | m |
| Lastkurven | | | 4000 | 3950 | 3255 | 2760 | 2385 | 2095 | - | - | 1860 | 1670 | 1515 | 1380 | 1265 | 1165 | 1080 | 1000 | kg |
| Load diagrams | | | | | | | | | 2000 | - | 1860 | 1670 | 1515 | 1380 | 1265 | 1165 | 1080 | 1000 | kg |
| Curvas de cargas | 32 m | 3 | 12,8 | 14 | 16 | 18 | 20 | 22 | 22,6 | 23,6 | 24 | 26 | 28 | 30 | 32 | | | | m |
| Curve di carico | | | 4000 | 3595 | 3050 | 2640 | 2320 | 2065 | - | - | 1855 | 1685 | 1535 | 1410 | 1300 | | | | kg |
| Curva de cargas | | | | | | | | | 2000 | - | 1855 | 1685 | 1535 | 1410 | 1300 | | | | kg |
| | | | | | | | | | | 2000 | 1965 | 1790 | 1640 | 1510 | 1400 | | | | kg |
| | 26,3 m | 3 | 13,4 | 14 | 16 | 18 | 20 | 22 | 23,6 | 24 | 24,6 | 26,3 | | | | | | | m |
| | | | 4000 | 3780 | 3210 | 2780 | 2445 | 2180 | - | 1960 | - | 1750 | | | | | | | kg |
| | | | | | | | | | 2000 | 1930 | - | 1750 | | | | | | | kg |
| | | | | | | | | | | | 2000 | 1850 | | | | | | | kg |



Flèche relevée
Ausleger in Steilstellung
Luffing jib
Flecha izada
Braccio impennato
Lança inclinada



Igo 42

POTAIN

| | | | | | |
|--|---|---|---|--|--|
| F | D | GB | E | I | P |
| Chariot distributeur | Verfahrbare Laufkatze | Traversing trolley | Carro distribuidor | Carrellino distributore | Carro distribuidor |
| Réactions en service | Reaktionskräfte in Betrieb | Reactions in service | Reacciones en servicio | Reazioni in servizio | Reações em serviço |
| Réactions hors service | Reaktionskräfte außer Betrieb | Reactions out of service | Reacciones fuera de servicio | Reazioni fuori servizio | Reações fora de serviço |
| A vide sans lest (ni train de transport) avec flèche et hauteur maximum. | Ohne Last, Ballast (und Transportachse), mit Maximalausleger und Maximalhöhe. | Without load, ballast (or transport axes), with maximum jib and maximum height. | Sin carga, sin lastre, (ni tren de transporte), flecha y altura máxima. | A vuoto, senza zavorra (ne assali di trasporto) con braccio massimo e altezza massima. | Sem carga (nem trem de transporte)- sem lastro com lança e altura máximas. |

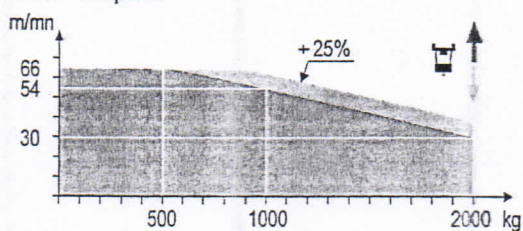
Mécanismes
Antriebe
Mechanisms
Mecanismos
Meccanismi
Mecanismos

MFC 1

| | | | ☐ | | | | | ☐ | | | | | ☐ | | | | | ch - PS | hp | kW | | | | |
|-----|-------------------------|-----------------------|--|----|----|----|----|-----|----|----|----|----|-----|-----|----|----|----|---------|------|------|------|------|----|----|
| ▲ | 15 LVF 10 Optima | m/min kg | 3,6 | 18 | 30 | 49 | 66 | 3,6 | 18 | 30 | 54 | 66 | 1,8 | 8,9 | 15 | 27 | 33 | 4000 | 4000 | 4000 | 2000 | 1000 | 15 | 11 |
| ◀ ▶ | 3 DVF 5 | m/min | 15 - 30 - 45 (0 → 1000 kg) - 15 - 30 - 41 (1000 → 4000 kg) | | | | | | | | | | | | | | | 3 | 2,2 | | | | | |
| ⦿ | RVF 41 Optima + | tr/min U/min - rpm | 0 → 0,8 | | | | | | | | | | | | | | | 4 | 3 | | | | | |

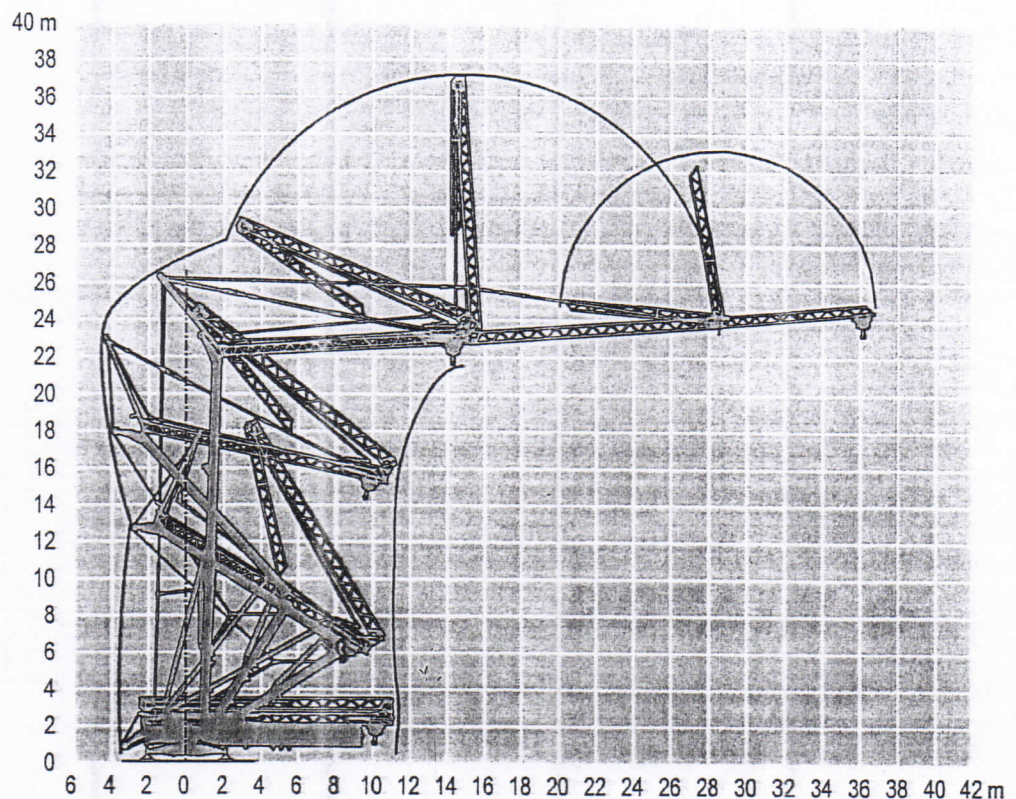
| CEI 38 | IEC 38 | kVA |
|------------------------|--------|--------------------|
| 400 V (+6% -10%) 50 Hz | | 15 LVF 10 : 22 kVA |
| 480 V (+6% -10%) 60 Hz | | 15 LVF 10 : 22 kVA |

15 LVF 10 Optima



Montage
Montage
Erection
Montaje
Montaggio
Montagem

MFC 1



Igo 42

POTAIN

F

Léverage

Distribution

Orientation

D

Heben

Katzfahren

Schwenken

GB

Hoisting

Trolleying

Stewing

E

Elevación

Distribución

Orientación

I

Sollevamento

Distribuzione

Rotazione

P

Elevação

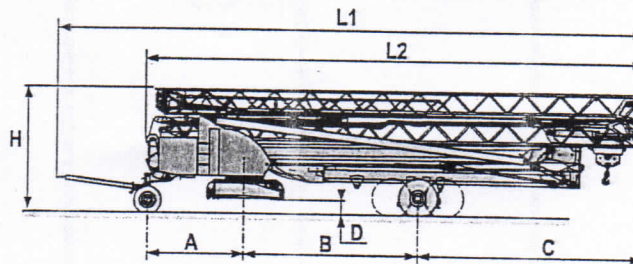
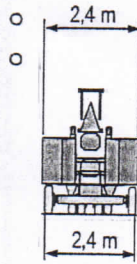
Distribuição

Rotação

Transport
Transport
Transport
Transporte
Transporto
Transporte

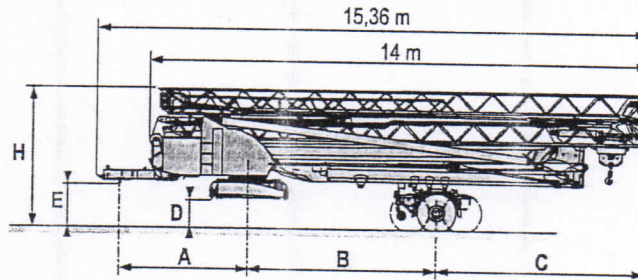
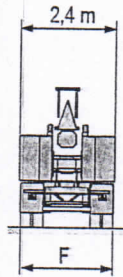
MFC 1

DJ80/S120
DJ100/S120
DJ105/S125
DJ126M/S125
DJ126M/S215M



| | L1 (m) | L2 (m) | A (m) | B (m) | C (m) | D (m) | H (m) |
|--------------|--------|--------|-------|-------|-------|-----------|-----------|
| DJ80/S120 | 16,4 | 14 | 2,75 | 4,88 | 6,2 | 0,36/0,21 | 3,52/3,37 |
| DJ100/S120 | 16,4 | 14 | 2,75 | 5,3 | 5,8 | 0,36/0,21 | 3,52/3,37 |
| DJ105/S125 | 16,4 | 14 | 2,75 | 5,3 | 5,8 | 0,36/0,21 | 3,52/3,37 |
| DJ126M/S125 | 16,95 | 14 | 2,75 | 5,3 | 5,8 | 0,36 | 3,52 |
| DJ126M/S215M | 17,75 | 14,4 | 3,55 | 5 | 6,1 | 0,75 | 4 |

SL121/J135
SL121/S215M
SL122/J215M



| | A (m) | B (m) | C (m) | D (m) | E (m) | H (m) | F (m) |
|-------------|-------|-------|-------|-------|-------|-------|-------|
| SL121/J135 | 3,65 | 5,1 | 6 | 0,78 | 1,3 | 4 | 2,45 |
| SL121/S215M | 3,65 | 5 | 6,17 | 0,78 | 1,3 | 4 | 2,4 |
| SL122/J215M | 3,65 | 5 | 6,17 | 0,78 | 1,3 | 4 | 2,45 |

Chantier
 Baustelle
 Site
 Obra
 Cantiere
 Estaleiro



Document commercial non contractuel. Pour toute information technique se référer à la notice correspondante.

Unverbindliches Vertriebsdokument. Für technische Informationen, siehe die entsprechenden Anweisungen.

This commercial document is not legally binding. For any technical information, please refer to the corresponding instructions.

Documento comercial no contractual. Para cualquier información técnica, ver la noticia correspondiente.

Documento commerciale non vincolante, per tutte le informazioni tecniche fare riferimento al catalogo istruzioni.

Documento comercial não contratual. Para qualquer informação técnica complementar consultar as respectivas instruções.

Manitowoc

Manitowoc
Crane CARE

POTAIN



Americas

Tel : +1 888 479 7278
Tel : +1 717 593 2000

Europe - Middle East - Africa

Tel : +33 (0) 4 72 81 50 00
Tel : +44 (0) 191 522 2000

Asia - Pacific

Tel : +65 6284 1188
Fax : +65 6882 4040

www.manitowoccrane.com

18, rue de Charbonnières - B.P.173
69132 ECULLY Cedex - France

Tél. : +33 (0) 4 72 18 20 20
Fax. : +33 (0) 4 72 18 20 00
www.manitowoccrane.com

Igo 42
Réf. 2008 03 MFC 1

Copyright.Reproduction interdite © POTAIN 2008

Réalisation Sedoc