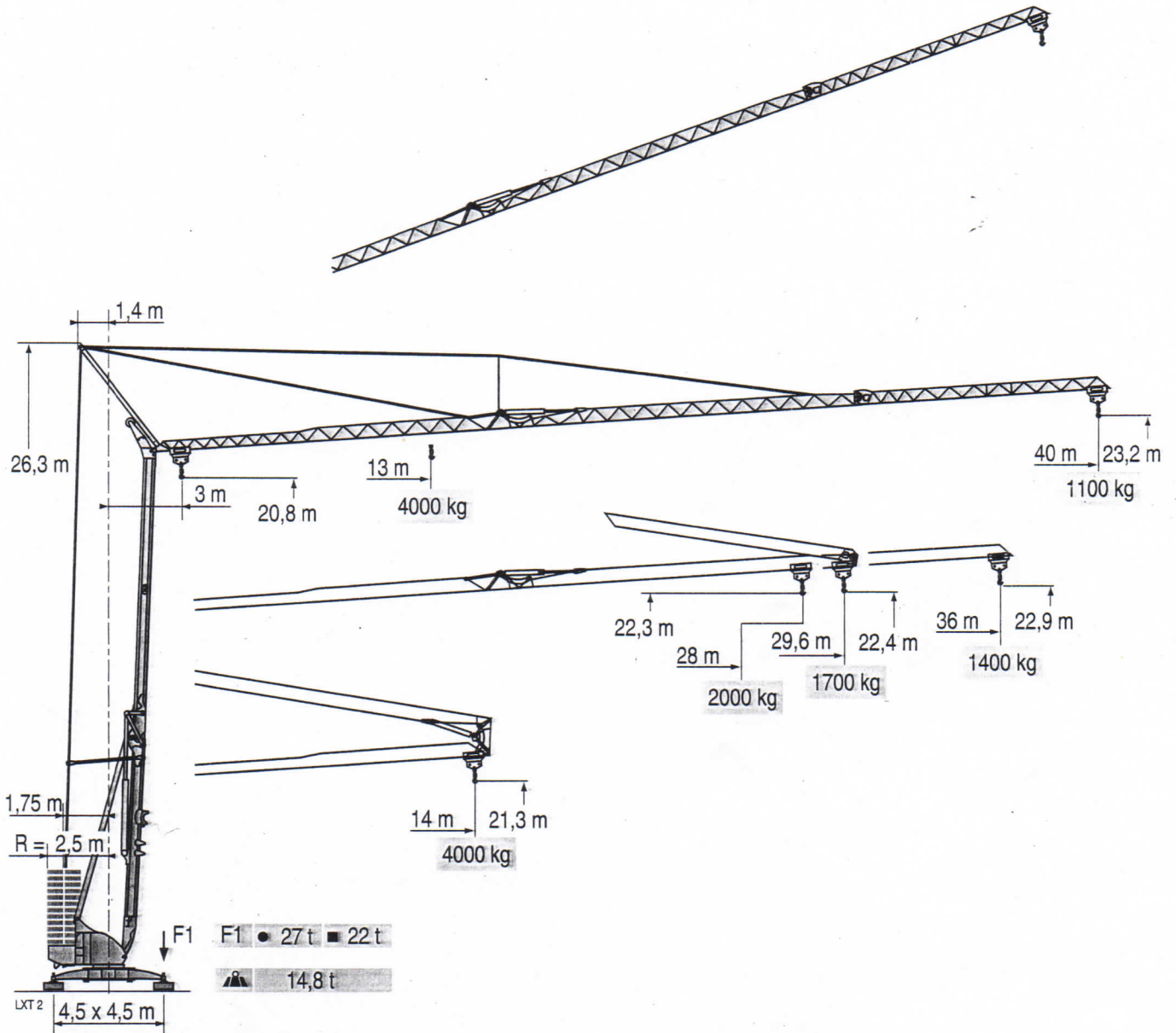


POTAIN

Igo 50



Courbes de charges

Lastkurven

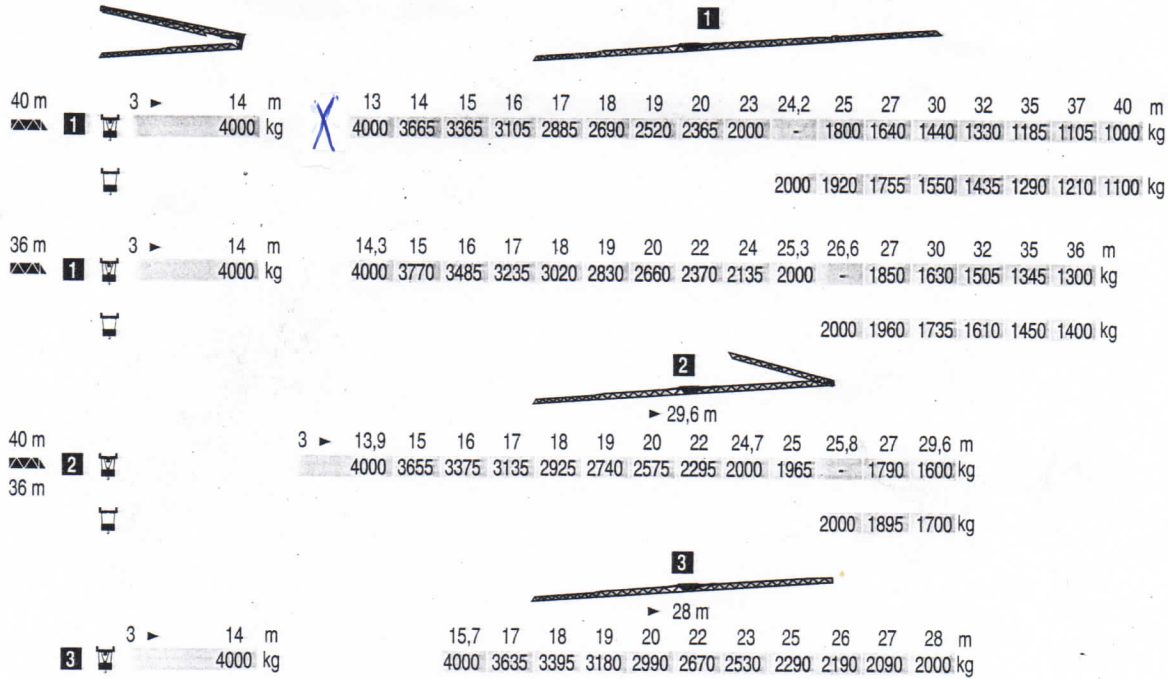
Load diagrams

Curvas de cargas

Curve di carico

Curva de cargas

LXT 2



Flèche relevée

Ausleger in Steilstellung

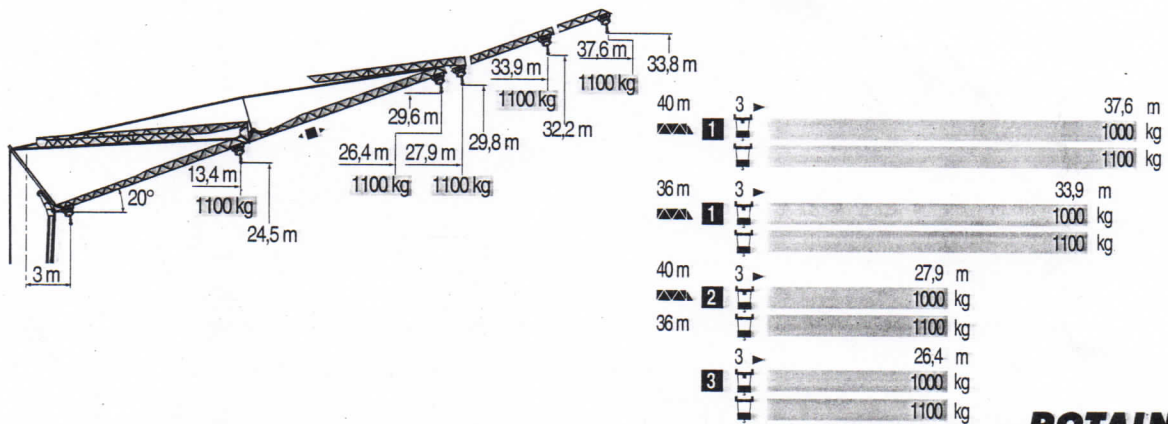
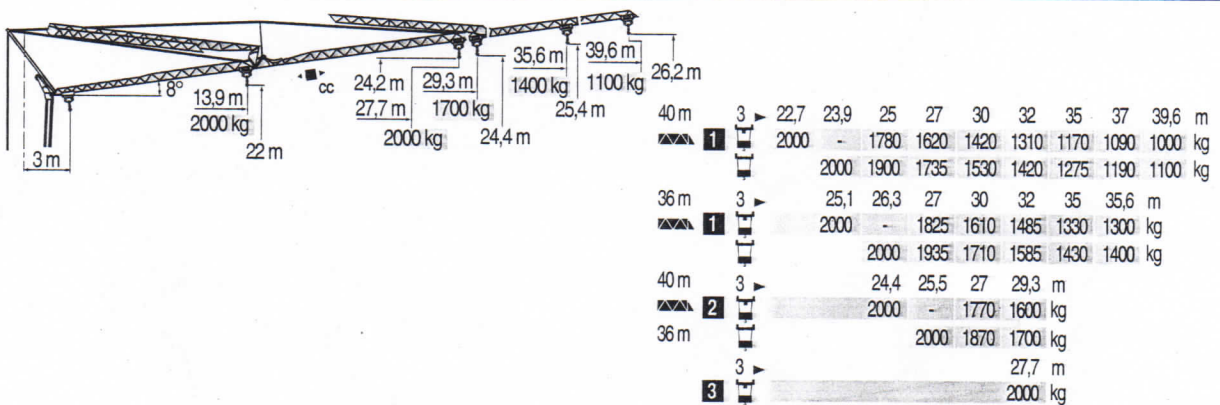
Luffing jib

Flecha izada

Braccio impennato

Lança inclinada

LXT 2



Igo 50

POTAIN

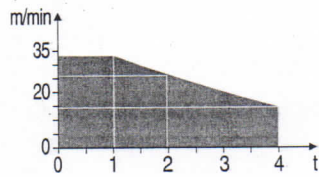
F	D	GB	E	I	P
Chariot distributeur	Verfahrbare Laufkatze	Traversing trolley	Carro distribuidor	Carrellino distributore	Carro distribuidor
Chariot distributeur et courbes de charges	Verfahrbare Laufkatze und Lastkurven	Traversing trolley and load diagrams	Carro distribuidor y curvas de cargas	Carrellino distributore e curva di carico	Carro distribuidor e curva de cargas
Reactions en service	Reaktionskräfte in Betrieb	Reactions in service	Reacciones en servicio	Reazioni in servizio	Reacções em serviço
Reactions hors service	Reaktionskräfte außer Betrieb	Reactions out of service	Reacciones fuera de servicio	Reazioni fuori servizio	Reacções fora de serviço
A vide sans lest (ni train de transport) avec flèche et hauteur maximum.	Ohne Last, Ballast (und Transportachse), mit Maximalausleger und Maximalhöhe.	Without load, ballast (or transport axes), with maximum jib and maximum height.	Sin carga, sin lastre, (ni tren de transporte), flecha y altura máxima.	A vuoto, senza zavorra (ne assali di trasporto) con braccio massimo e altezza massima.	Sem carga (nem trem de transporte)- sem lastro com lança e altura máximas.

Mécanismes
Antriebe
Mechanisms
Mecanismos
Meccanismi
Mecanismos

LXT 2

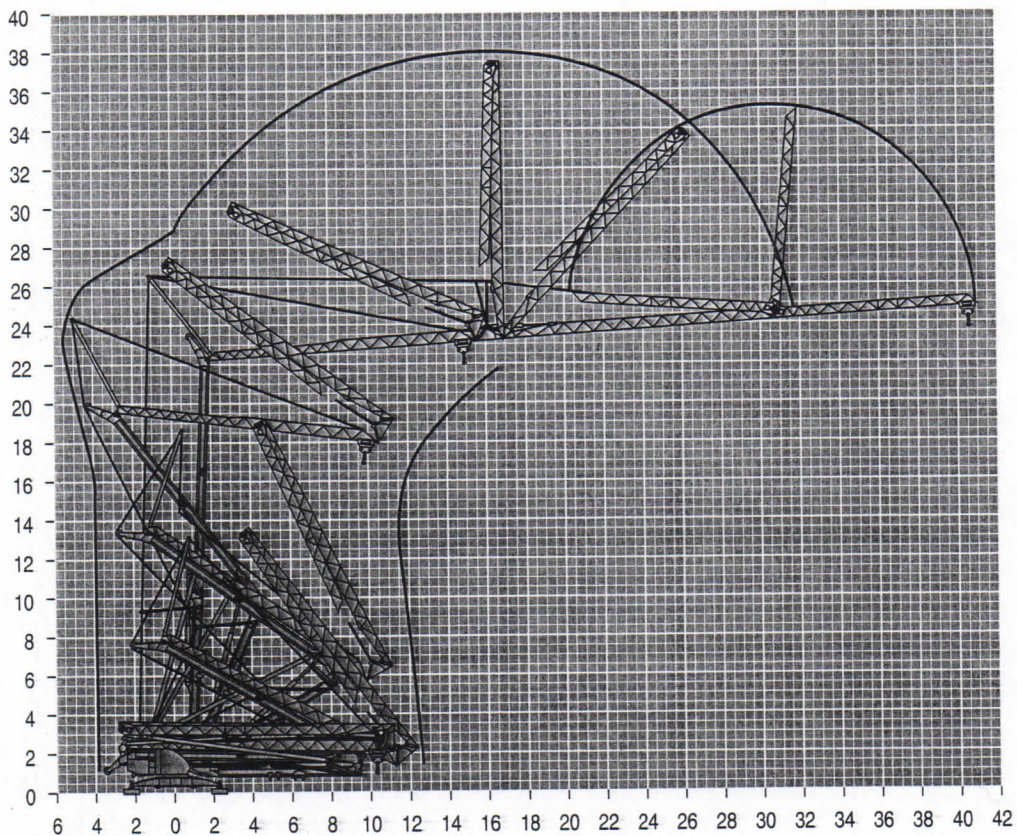
		⚙️					⚙️					ch - PS hp	kW	
⚙️	15 LVF 10 Optima	m/min	3,6	18	30	49	66						15	11
		kg	2000	2000	2000	1100	500							
		m/min	3,6	18	30	54	66	1,8	8,9	15	27	33		
		kg	2000	2000	2000	1000	500	4000	4000	4000	2000	1000		
◀▶	3 DVF5	m/min	19 - 45 (0 → 1000 kg) - 19 - 41 (1000 → 4000 kg)									3	2,2	
⚙️	RVF+ 51	tr/min U/min rpm	0 → 0,8									5,5	4	
CEI 38 ⚡ IEC 38		kVA					🔊							
400 V (+6% -10%) 50 Hz		15 LVF 10 : 23 kVA					2000/14							

15 LVF 10
Optima



Montage
Montage
Erection
Montaje
Montaggio
Montagem

LXT 1



Igo 50

POTAIN ⚙️



F

Levage
Distribution
Orientation

Conforme aux directives CEE
sur le niveau acoustique

D

Heben
Katzfahren
Schwenken

Gemäss EWG-Richtlinien für
den Schall-Leistungspegel

GB

Hoisting
Trolleying
Slewing

In compliance with the EEC
Instructions on noise level

E

Elevación
Distribución
Orientación

Conforme con las directivas
CEE sobre el nivel acústico

I

Sollevamento
Distribuzione
Rotazione

Conforme alle direttive CEE
sul livello acustico

P

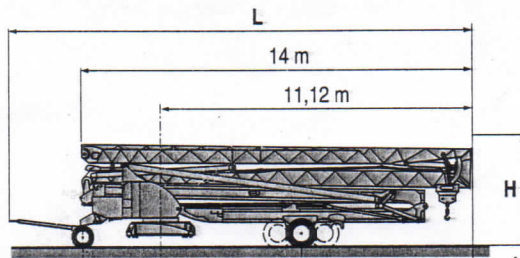
Elevação
Distribuição
Rotação

Conforme as directivas CEE
sobre o nível acústico

Transport
 Transport
 Transport
 Transporte
 Trasporto
 Transporte

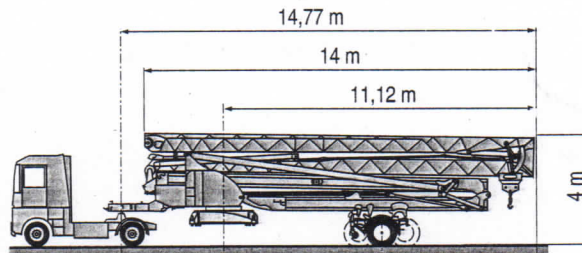
DJ100/S120 ○
 DJ105/S125
 DJ126M/S125
 DJ126M/S215M

LXT 4



				H	L
DJ100/S120	2,75 m	5,25 m	5,87 m	3,57 m	16,39 m
DJ105/S125	2,75 m	5,25 m	5,87 m	3,57 m	16,39 m
DJ126M/S125	2,75 m	5,25 m	5,87 m	3,57 m	16,96 m
DJ126M/S215M	3,55 m	4,93 m	6,19 m	4 m	17,75 m

SL122/J215M
 SL121/J135
 SL121/S215M



SL122/J215M	3,65 m	4,93 m	6,19 m
SL121/J135	3,65 m	5,88 m	5,24 m
SL121/S215M	3,65 m	4,93 m	6,19 m

F
 Chantier

D
 Baustelle

GB
 Site

E
 Obra

I
 Cantiere

P
 Estaleiro



Document commercial non contractuel. Pour toute information technique se référer à la notice correspondante

Unverbindliches Vertriebsdokument. Für technische Informationen, siehe die entsprechenden Anweisungen.

This commercial document is not legally binding. For any technical information, please refer to the corresponding instructions.

Documento comercial no contractual. Para cualquier información técnica, ver la noticia correspondiente.

Documento commerciale non vincolante, per tutte le informazioni tecniche fare riferimento al catalogo istruzioni

Documento comercial não contractual. Para qualquer informação técnica complementar consultar as respectivas instruções

Manitowoc
 Crane CARE

POTAIN
 Manitowoc Crane Group



18, rue de Charbonnières - B.P.173
 69132 ECULLY Cedex - France

Tél. : (33) 4 72 18 20 20
 Fax. : (33) 4 72 18 20 00
 www.manitowoccrane.com www.potain.com



www.manitowoccrane.com

Igo 50
 Réf. 2003 48 LXT 4

Copyright.Reproduction interdite © POTAIN 2003

Réalisation Sedoc