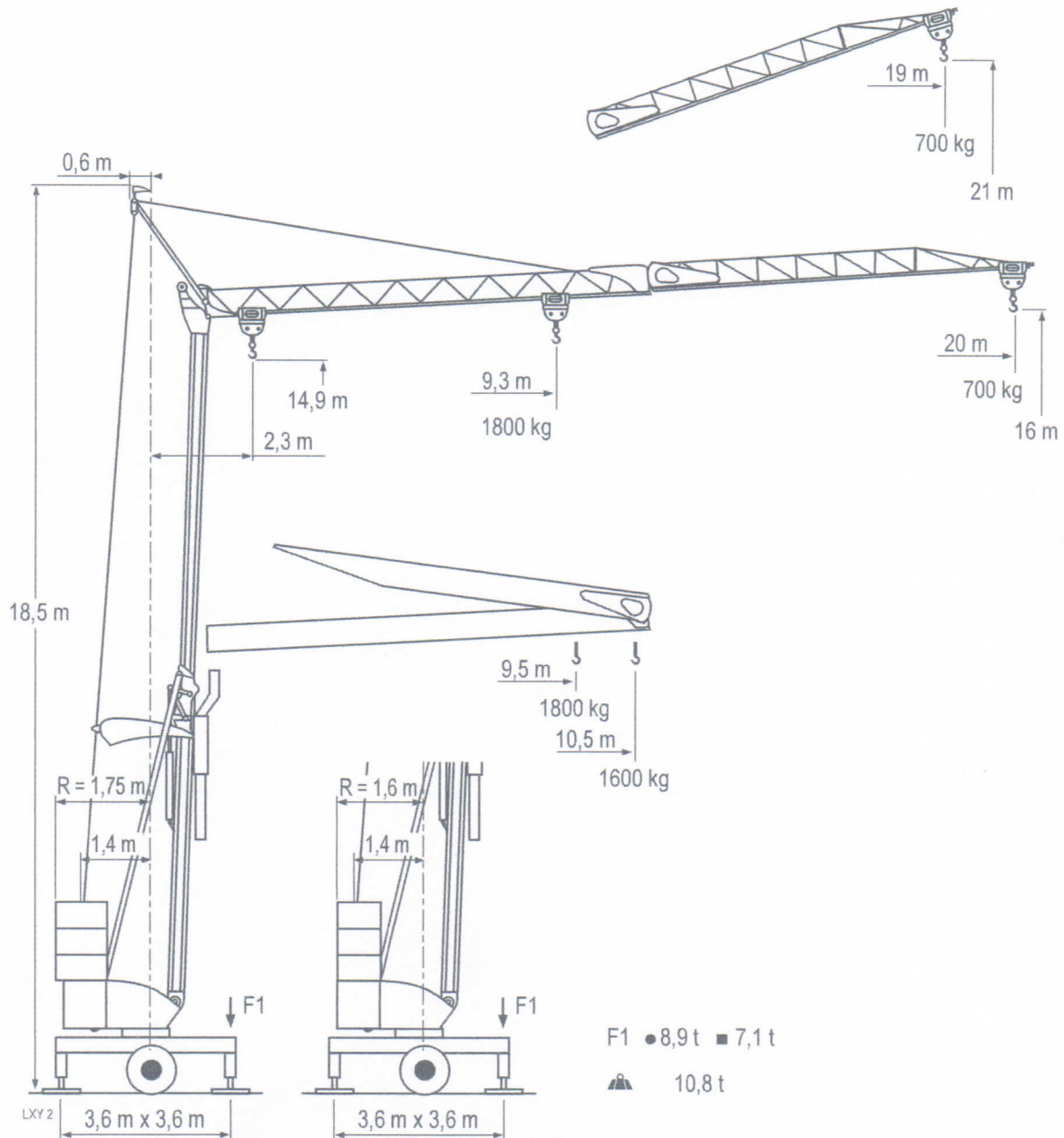


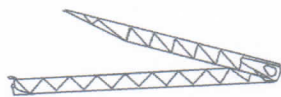
**POTAIN** ®

# Igo MB 13



Courbes de charges  
Lastkurven  
Load diagrams  
Curvas de cargas

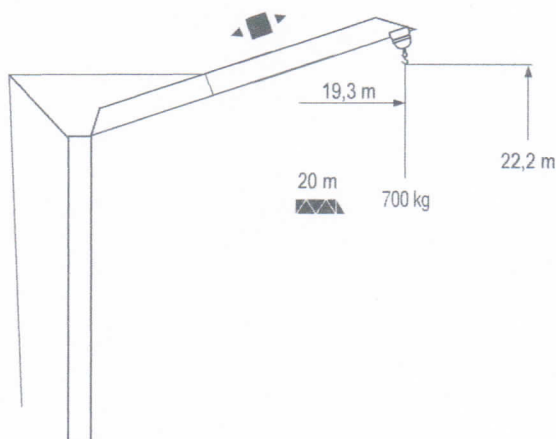
Curve di carico 20 m  
Curva de cargas



2,8	▶	9,8	10,8	m	9,3	10	11	12	13	14	15	16	17	18	19	20	m
		1800	1600	kg	1800	1650	1463	1315	1190	1090	1000	925	855	800	745	700	kg

UXY 1

Flèche relevée  
Ausleger in Steilstellung  
Luffing jib  
Flecha izada  
Braccio impennato  
Lança inclinada



UXY 1

## Igo MB 13

**POTAIN**



**F**  
Chariot distributeur  
Réactions en service  
Réactions hors service  
A vide sans lest (ni train de transport) avec flèche et hauteur maximum.

**D**  
Verfahrbare Laufkatze  
Reaktionskräfte in Betrieb  
Reaktionskräfte außer Betrieb  
Ohne Last, Ballast (und Transportachse), mit Maximalausleger und Maximalhöhe.

**GB**  
Traversing trolley  
Reactions in service  
Reactions out of service  
Without load, ballast (or transport axles), with maximum jib and maximum height.

**E**  
Carro distribuidor  
Reacciones en servicio  
Reacciones fuera de servicio  
Sin carga, sin lastre, (ni tren de transporte), flecha y altura máxima.

**GE**  
Carrellino distributore  
Reazioni in servizio  
Reazioni fuori servizio  
A vuoto, senza zavorra (ne assali di trasporto) con braccio massimo e altezza massima.

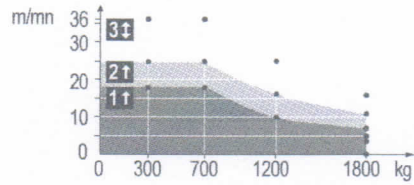
**GE**  
Carro distribuidor  
Reacções em serviço  
Reacções fora de serviço  
Sem carga (nem trem de transporte)- sem lastro com lança e altura máximas.

Mécanismes  
Antriebe  
Mechanisms  
Mecanismos  
Meccanismi  
Mecanismos

LX2

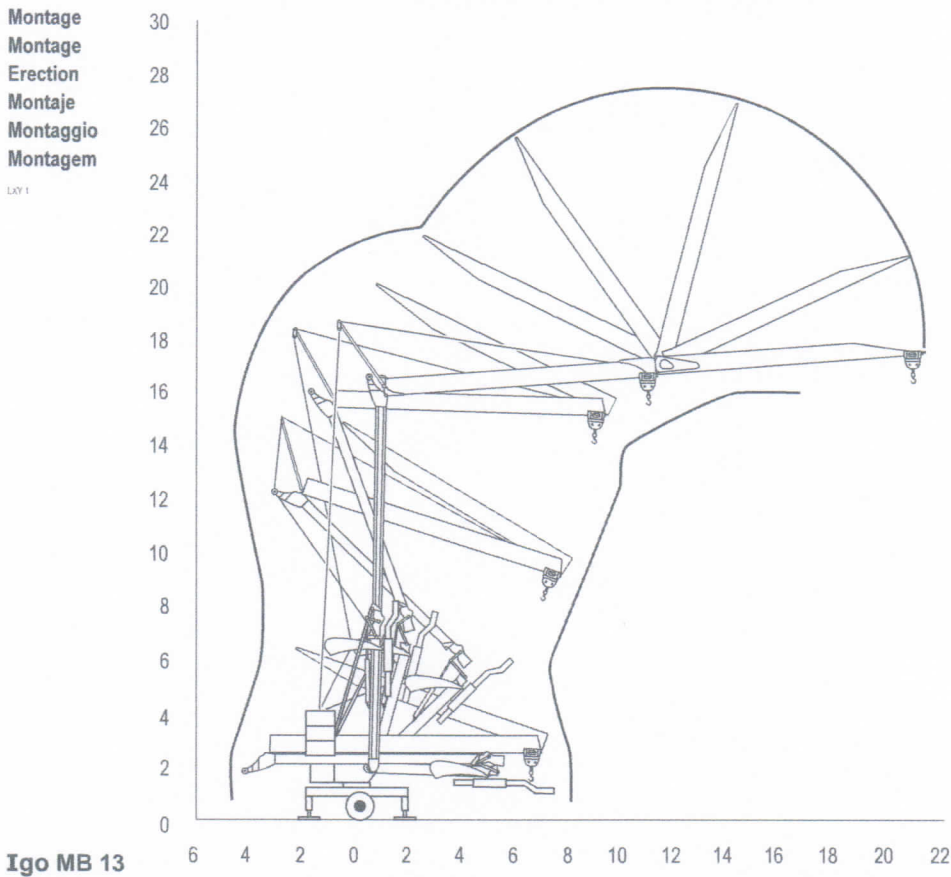
						ch - PS hp	kW		
▲ ▼	8 LVF 9 Optima	230 V 20 A <b>1</b>	m/min kg	↑ 3,5 ↓ 3,5 1800	↑ 7 ↓ 16 1800	↑ 18 ↓ 36 700	3,3	2,4	
		230 V 32 A <b>2</b>	m/min kg	↑ 3,5 ↓ 3,5 1800	↑ 11 ↓ 16 1800	↑ 25 ↓ 36 700	5,2	3,8	
		400 V <b>3</b>	m/min kg	↓ 3,5 1800	↓ 16 1800	↓ 36 700	7,5	5,5	
◀ ▶	1 DVF 4	-	m/min	14 - 28		1,5	1,1		
	RVF 20	-	tr/min U/min rpm	0 → 1		1,5	1,1		
CEI 38  IEC 38			kVA						
230 V (+6% -10%) 50 Hz 400 V (+6% -10%) 50 Hz			230 V 20 A : 4,6 kVA    230 V 32 A : 7,4 kVA 400 V : 11 kVA						

8 LVF 9  
Optima



Montage  
Montage  
Erection  
Montaje  
Montaggio  
Montagem

LX1

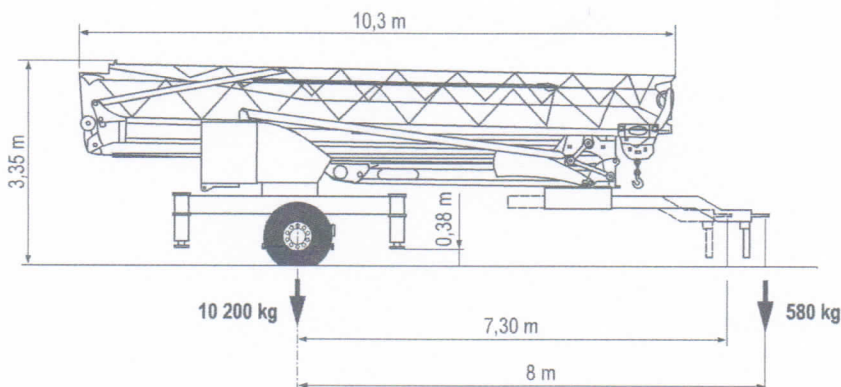


**POTAIN**

	Levage		Heben		Hoisting		Elevación		Sollevamento		Elevação
	Distribution		Katzfahren		Trolleying		Distribución		Distribuzione		Distribuição
	Orientation		Schwenken		Slewing		Orientación		Rotazione		Rotação
	50 Hz Monophasé		50 Hz Einphasige		50 Hz Single phase		50 Hz Monofásica		50 Hz Monofase		50 Hz monofásica

Transport  
 Transport  
 Transport  
 Transporte  
 Trasporto  
 Transporte

LX7 2



Document commercial non contractuel. Pour toute information technique se référer à la notice correspondante.

Unverbindliches Vertriebsdokument. Für technische Informationen, siehe die entsprechenden Anweisungen.

This commercial document is not legally binding. For any technical information, please refer to the corresponding instructions.

Documento commercial no contractual. Para cualquier información técnica, ver la noticia correspondiente.

Documento commerciale non vincolante, per tutte le informazioni tecniche fare riferimento al catalogo istruzioni.

Documento comercial não contractual. Para qualquer informação técnica complementar consultar as respectivas instruções.

**anitowoc.**

**POTAIN**

**Manitowoc Crane Group**



**Americas**

Tel : +1 888 479 7278  
 Tel : +1 717 593 2000

**Europe - Middle East - Africa**

Tel : +33 (0) 4 72 81 50 00  
 Tel : +44 (0) 191 522 2000

**Asia - Pacific**

Tel : +65 6264 1188  
 Fax : +65 6862 4142

[www.manitowoccrane.com](http://www.manitowoccrane.com)

18, rue de Charbonnières - B.P.173  
 69132 ECULLY Cedex - France

Tél. : +33 (0) 4 72 18 20 20  
 Fax. : +33 (0) 4 72 18 20 00  
[www.manitowoccrane.com](http://www.manitowoccrane.com)

**Igo MB 13**

Ref. 2003 48 LX7 3

Copyright.Reproduction interdite © POTAIN 2003

Réalisation Sedoc