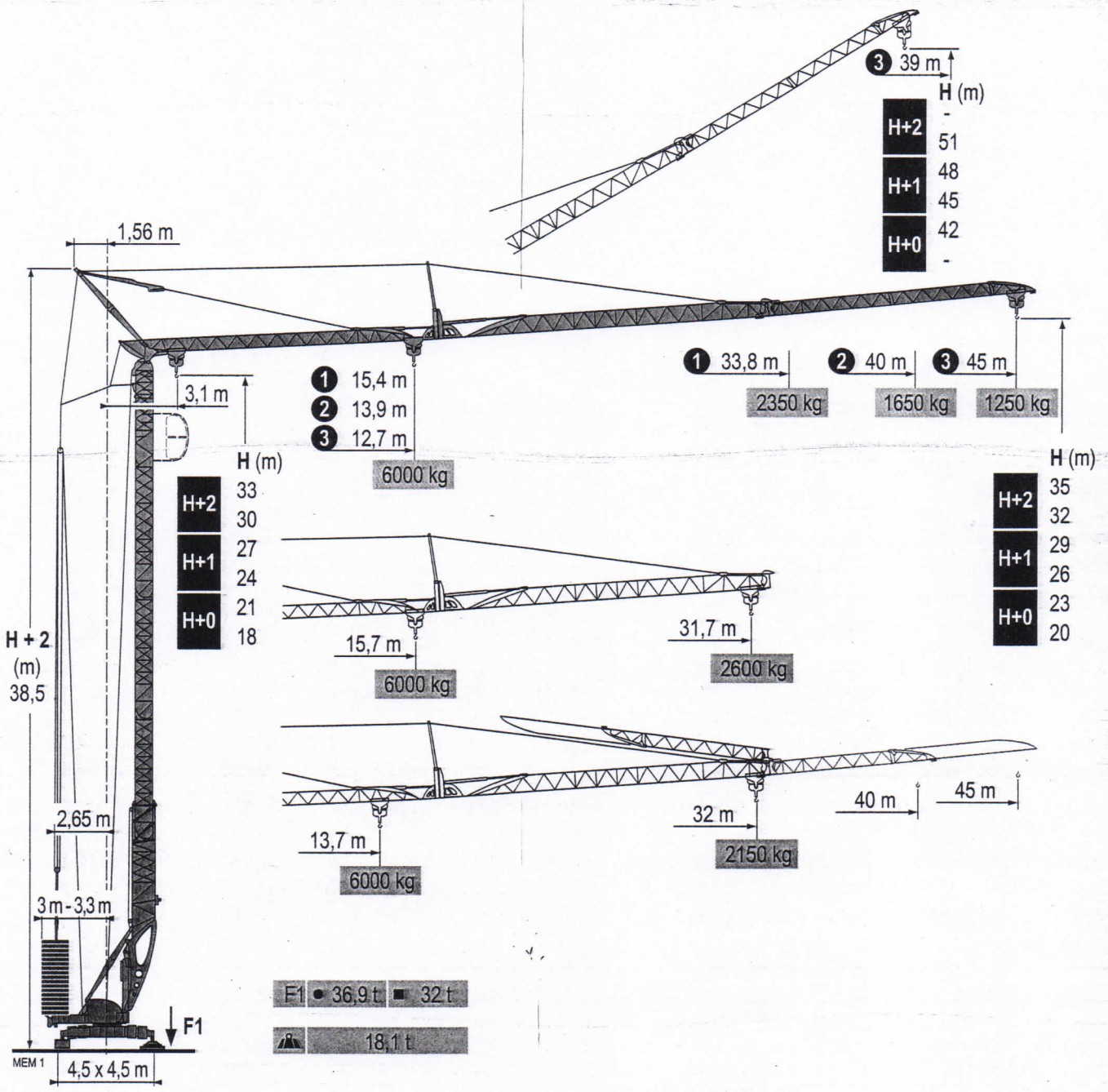


POTAIN

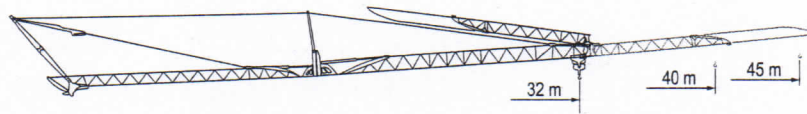
Igo T 85



Courbes de charges	45 m	3,1	12,7	14	16	18	20	22,4	24	26	28	30	32	34	36	38	40	42	45	m
Lastkurven			6000	5330	4520	3915	3445	3000	2760	2500	2285	2100	1935	1795	1670	1555	1460	1370	1250	kg
Load diagrams								3000	2760	2500	2285	2100	1935	1795	1670	1555	1460	1370	1250	kg
Curvas de cargas	40 m	3,1	13,9	16	18	20	22	24,6	26	28	30	32	34	36	38	40				m
Curve di carico			6000	5045	4375	3850	3430	3000	2805	2565	2355	2180	2020	1885	1760	1650				kg
Curva de cargas								3000	2805	2565	2355	2180	2020	1885	1760	1650				kg

MEM 1

	33,8 m	3,1	15,4	18	20	22	24	26	27,6	30	32	33,8								m
			6000	4995	4405	3930	3545	3220	3000	2715	2510	2350								kg
									3000	2715	2510	2350								kg
	31,7 m	3,1	15,7	18	20	22	24	26	28,1	30	31,7									m
			6000	5110	4505	4020	3625	3295	3000	2780	2600									kg
									3000	2780	2600									kg

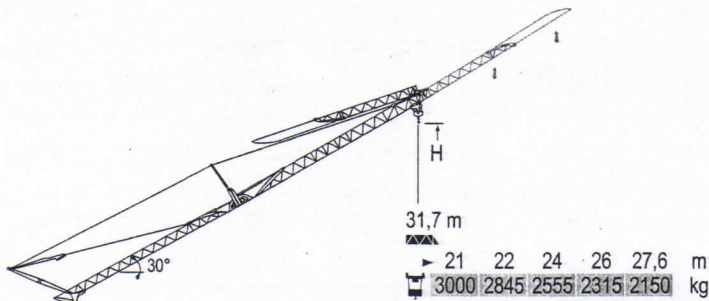


	32 m	3,1	13,7	16	18	20	22	24,3	26	28	30	32								m
			6000	4985	4320	3805	3390	3000	2770	2530	2325	2150								kg
								3000	2770	2530	2325	2150								kg

Flèche relevée
Ausleger in Steilstellung
Luffing jib
Flecha izada
Braccio impennato
Lança inclinada

MEM 1

	45 m	19,5	22	24	26	28	30	32	34	36	38	39								m
		3000	2595	2325	2105	1920	1760	1620	1500	1390	1295	1250								kg
	40 m	21,5	24	26	28	30	32	34,8												m
		3000	2625	2375	2170	1990	1835	1650												kg
	33,8 m	24	26	28	29,3															m
		3000	2720	2485	2350															kg
	31,7 m	24,5	26	27,6																m
		3000	2795	2600																kg



(m)	45	40	33,8	31,7
H+2	-	-	-	-
	51	48,5	45,4	44,4
H+1	48	45,5	42,4	41,4
	45	42,5	39,4	38,4
H+0	42	39,5	36,4	35,4
	-	-	-	-

Igo T 85



F
Réactions en service
Réactions hors service

D
Reaktionskräfte in Betrieb
Reaktionskräfte außer Betrieb








GB
Reactions in service
Reactions out of service

E
Reacciones en servicio
Reacciones fuera de servicio

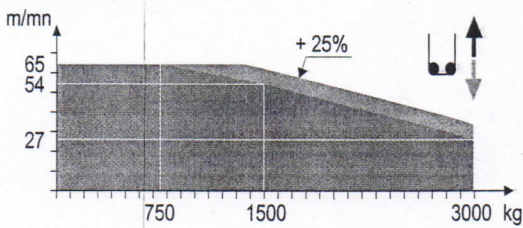
I
Reazioni in servizio
Reazioni fuori servizio

P
Reações em serviço
Reações fora de serviço

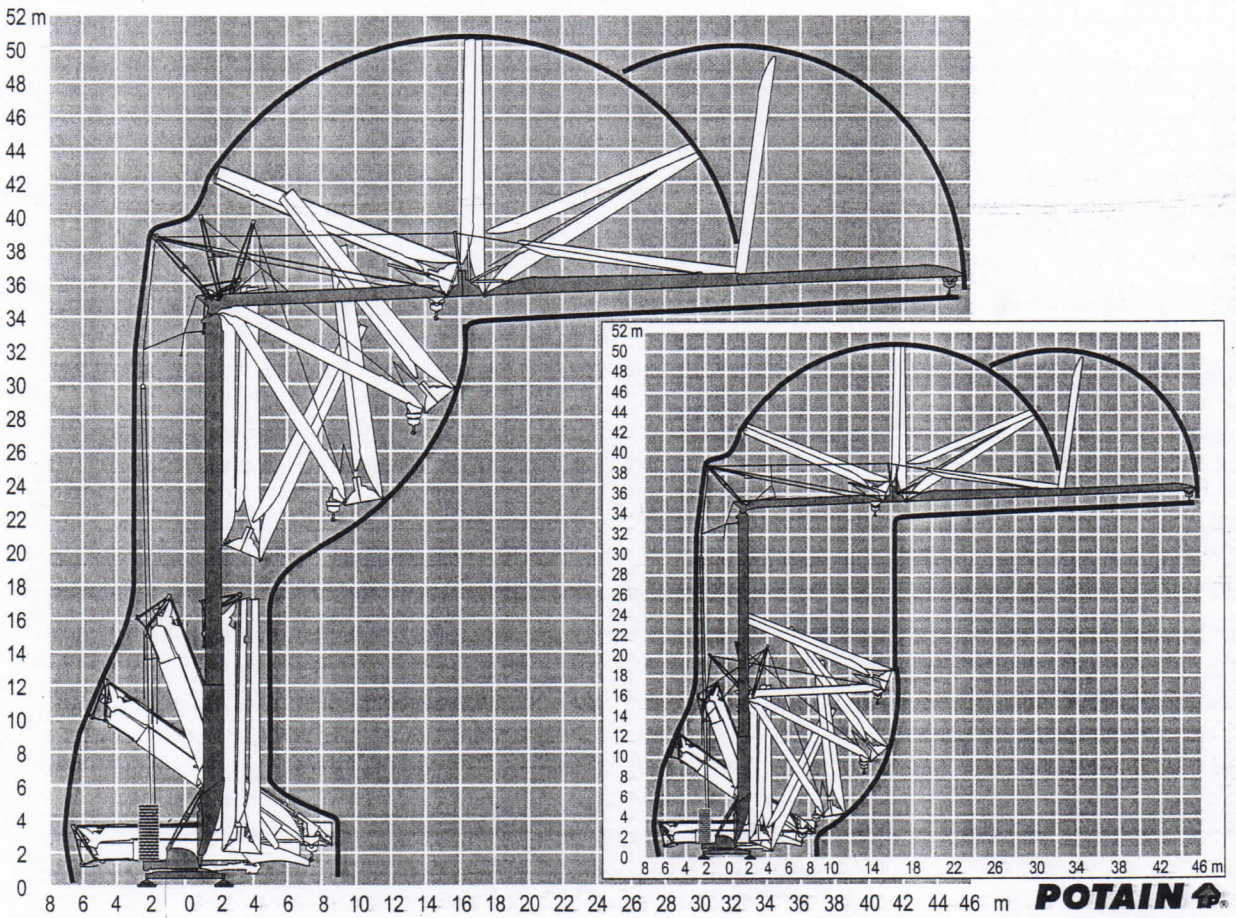
Mécanismes
 Antriebe
 Mechanisms
 Mecanismos
 Meccanismi
 Mecanismos

													ch - PS hp	kW
	20 LVF 15 Optima	m/min	3,2	16	27	54	65	1,6	8	13,5	27	32,5	20	15
		kg	3000	3000	3000	1500	750	6000	6000	6000	3000	1500		
	5 DVF 5	m/min	15 - 30 - 55 (0 → 2000 kg) - 15 - 30 - 40 (2000 → 6000 kg)										5,5	4
	RVF 51 Optima +	tr/min U/min - rpm	0 → 0,8										5,5	4
	TVF 324	m/min	25										2 x 4	2 x 3
			CEI 38 					kVA						
			400 V (+6% -10%) 50 Hz					20 LVF 15 : 31 kVA						
			480 V (+6% -10%) 60 Hz					20 LVF 15 : 31 kVA						

20 LVF 15 Optima



Montage
 Montage
 Erection
 Montaje
 Montaggio
 Montagem



Igo T 85

POTAIN 



F
 Levage
 Distribution

D
 Heben
 Katzfahren

GB
 Hoisting
 Trolleying

E
 Elevación
 Distribución

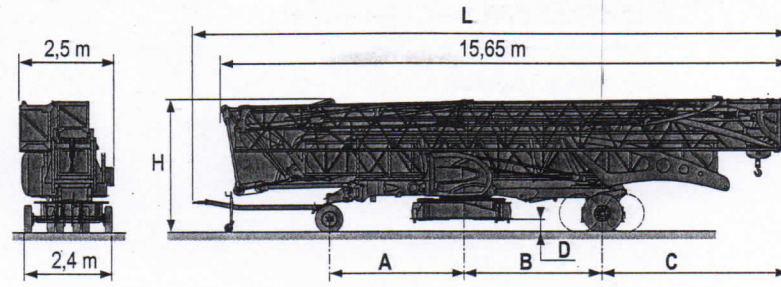
I
 Sollevamento
 Dirituzione

P
 Elevação
 Distribuição

Transport
Transport
Transport
Transporte
Trasporto
Transporto

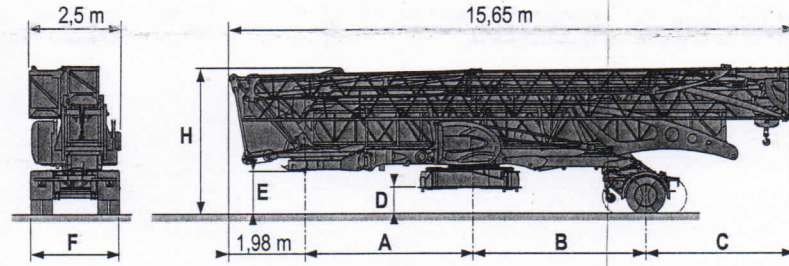
MEM 1

- DJ80/S120 ○
- DJ100/S120 ○
- DJ105/S125
- DJ126M/S125
- DJ126M/S215M



	L (m)	A (m)	B (m)	C (m)	D (m)	H (m)
DJ80/S120	16,65	3,78	3,77	5,2	0,3	3,7
DJ100/S120	16,65	3,78	3,77	5,2	0,3	3,7
DJ105/S125	16,65	3,78	3,77	5,2	0,3	3,7
DJ126M/S125	16,77	3,79	3,77	5,2	0,3	3,7
DJ126M/S215M	16,65	4,58	3,21	5,77	0,6	4

- SL121/J135
- SL121/S215M
- SL122/J215M



	A (m)	B (m)	C (m)	D (m)	E (m)	H (m)	F (m)
SL121/J135	4,69	4,71	4,27	0,7	1,3	4,1	2,45
SL121/S215M	4,69	3,21	5,77	0,6	1,2	4	2,4
SL122/J215M	4,69	3,21	5,77	0,6	1,2	4	2,45

- F** Chantier
- D** Baustelle
- GB** Site
- E** Obra
- I** Cantiere
- P** Estaleiro



Document commercial non contractuel. Pour toute information technique se référer à la notice correspondante.

Unverbindliches Vertriebsdokument. Für technische Informationen, siehe die entsprechenden Anweisungen.

This commercial document is not legally binding. For any technical information, please refer to the corresponding instructions.

Documento commercial no contractual. Para cualquier información técnica, ver la noticia correspondiente.

Documento commerciale non vincolante, per tutte le informazioni tecniche fare riferimento al catalogo istruzioni.

Documento comercial não contractual. Para qualquer informação técnica complementar consultar as respectivas instruções.



18, rue de Charbonnières - B.P.173
69132 ECULLY Cedex - France

Tél. : +33 (0) 4 72 18 20 20
Fax. : +33 (0) 4 72 18 20 00
www.manitowoccrane.com



salton Sedoc