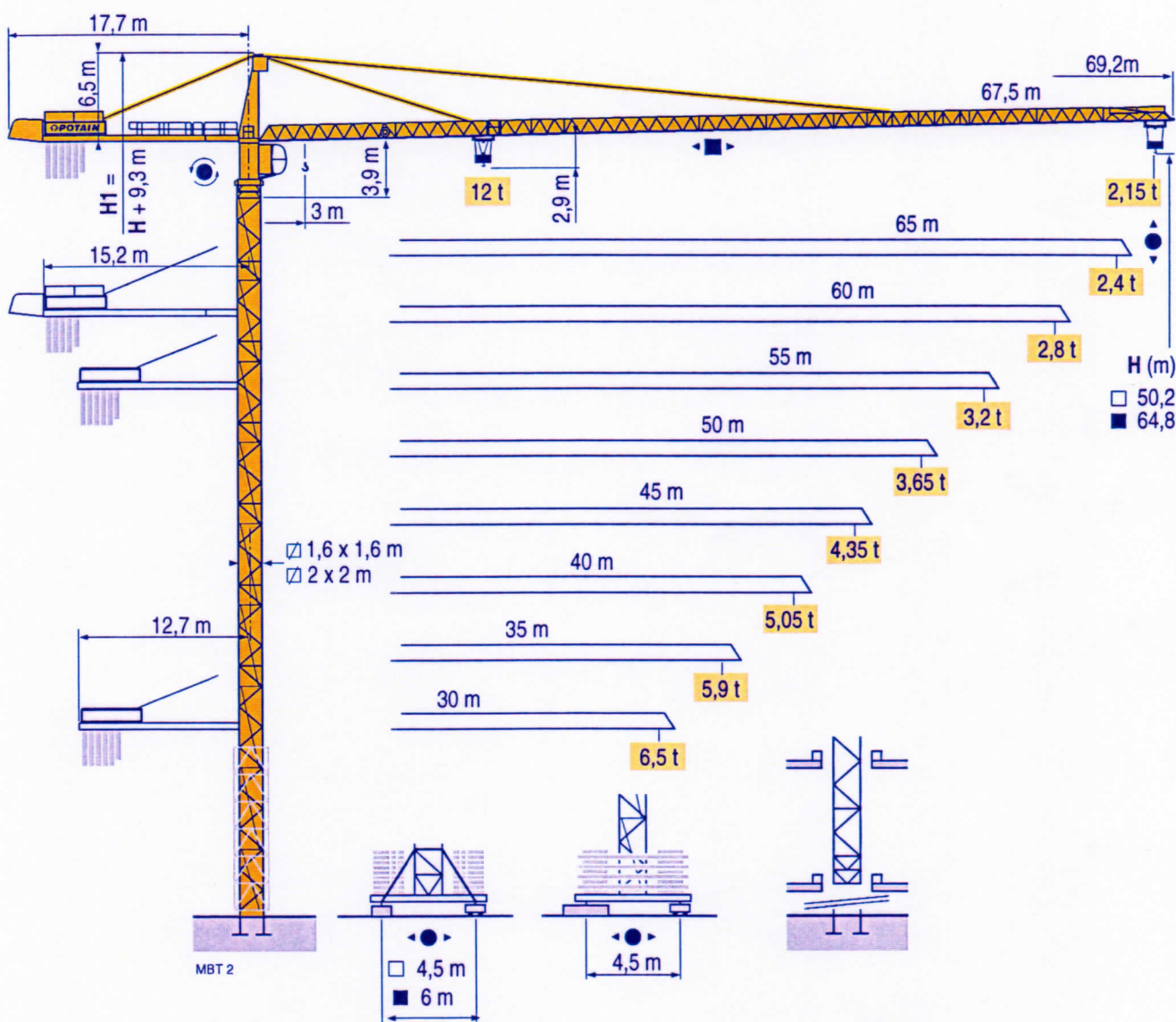


POTAIN

MD 238 A J12



TOPKIT

CE FEM 1.001-A3

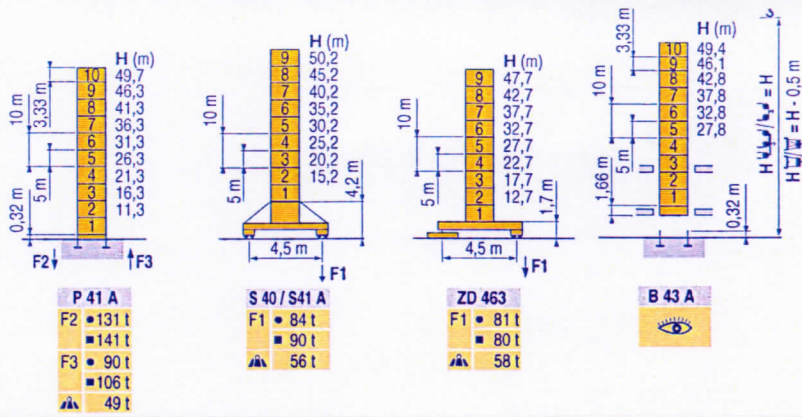
Manitowoc
Crane Group

Above. Beyond. Everywhere.™

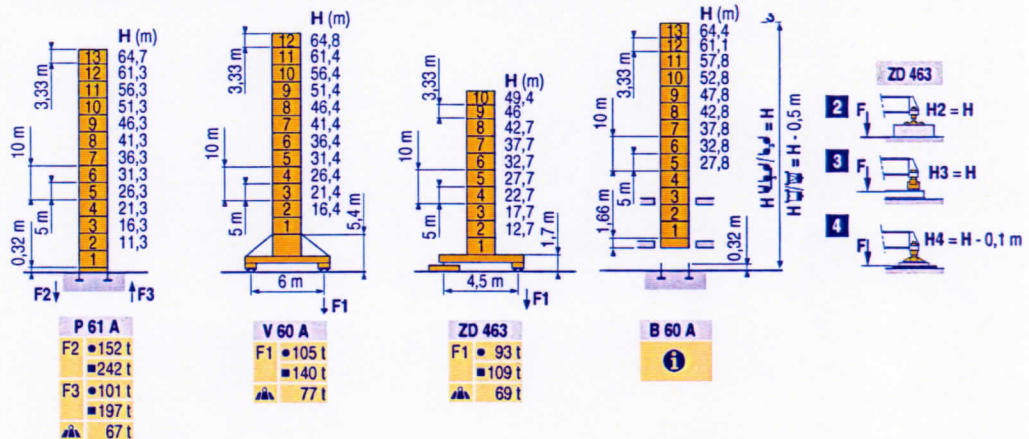
Mat / Réactions \square 1,6 m

Maste /
Eckdrücke 30 m \Rightarrow 60 m
Masts /
Reactions
Mástil /
Reacciones
Torre / Reazioni
Tramo /
Reacções

MBT 1

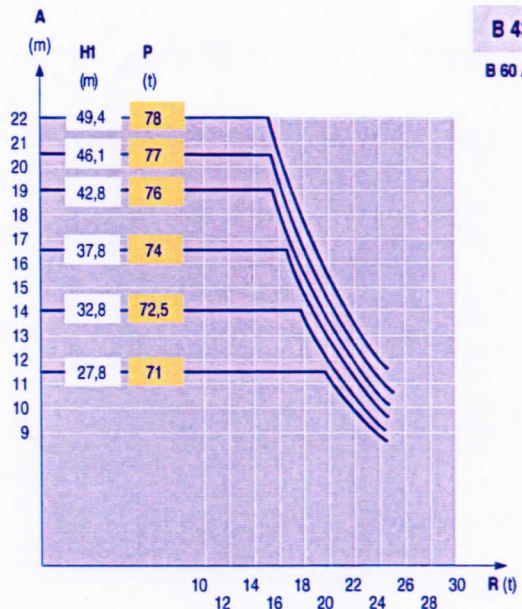
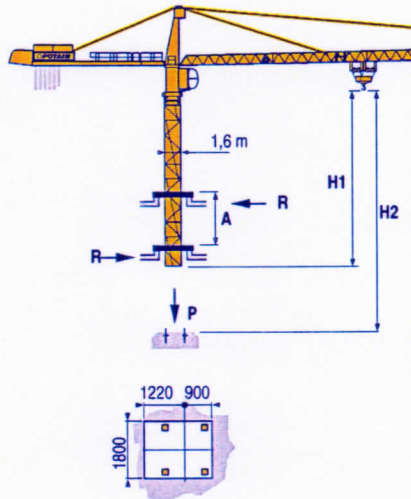


\square 2 m
30 m \Rightarrow 67,5 m



Télescopage sur dalles
Kletterkrane im Gebäude
Climbing crane
Telescopage gruas trepadoras
Gru in cavedio
Telescopagem sobre lages

MBT 1



B 43 A
B 60 A

TOPKIT
MD 238 A J12

POTAIN

F	D	GB	E	I	P
●	●	●	●	●	●
■	■	■	■	■	■
▲	▲	▲	▲	▲	▲
ⓘ	ⓘ	ⓘ	ⓘ	ⓘ	ⓘ
Réactions en service	Reaktionskräfte in Betrieb	Reactions in service	Reacciones en servicio	Reazioni in servizio	Reacções em serviço
Réactions hors service	Reaktionskräfte außer Betrieb	Reactions out of service	Reacciones fuera de servicio	Reazioni fuori servizio	Reacções fora de serviço
A vide sans lest (ni train de transport) avec flèche et hauteur maximum.	Ohne Last, Ballast (und Transportachse), mit Maximalausleger und Maximalhöhe.	Without load, ballast (or transport axes), with maximum jib and maximum height.	Sin carga, sin lastre, (ni tren de transporte), flecha y altura máxima.	A vuoto, senza zavorra (ne assali di trasporto) con braccio massimo e altezza massima.	Sem carga (nem tren de transporte)- sem lastro com lança e altura máximas.
Nous consulter	Auf Anfrage	Consult us	Consultarnos	Consultateci	Consultar-nos

Curbes de charges

Lastkurven

Load diagrams

Curvas de cargas

Curve di carico

Curva de cargas

MBT 1

Table of load curves for MBT 1 with columns for height (m) and load (t) for various configurations.

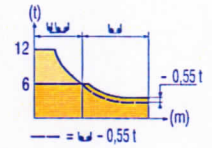
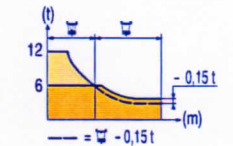


Table of load curves for MBT 2 with columns for height (m) and load (t) for various configurations.



Lest de contre-flèche / Gegenauslegerballast / Counter-jib ballast / Lastre de contra flecha / Contrappeso / Lastros da contra lança

MBT 2

Table for counter-jib ballast with columns for height (m), weight (kg), and crane configurations.

Lest de base

Grundballast

Base ballast

Lastre de base

Zavorra di base

Lastros da base

MBT 1

Table for base ballast with columns for height (m), weight (t), and crane configurations.

Ancrages

Verankerungen

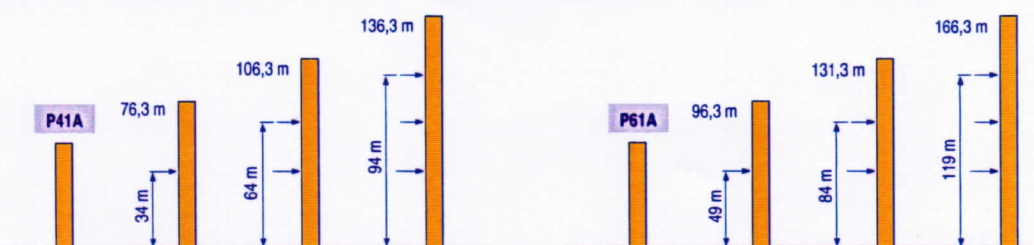
Anchorage

Anclaje

Ancoraggio

Ancoragem

MBT 1



TOPKIT









MD 238 A J12

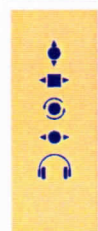
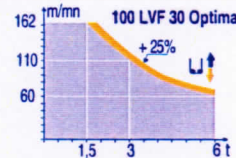
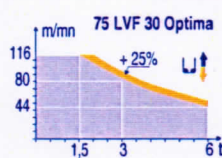
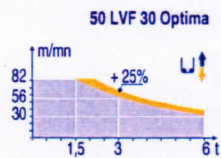


Table defining symbols A, H1, P, R, F, D, GB, E, I, P and their corresponding descriptions in multiple languages.

Mécanismes
Antriebe
Mechanisms
Mecanismos
Meccanismi
Mecanismos

MBT 3

		U ↑						U U ↑						ch - PS hp	kW		
▲ ▼	50 LVF 30 Optima	m/min	2,6	→ 10	→ 30	→ 40	→ 56	→ 82	1,3	→ 5	→ 15	→ 20	→ 28	→ 41	50	37	337 m
	t	6	6	6	4,5	3	1,5	12	12	12	9	6	3				
▲ ▼	75 LVF 30 Optima	m/min	3,6	→	44	→ 56	→ 80	→ 116	1,8	→	22	→ 28	→ 40	→ 58	75	55	766 m
	t	6		4,5	3	1,5	6		9	6	3						
▲ ▼	100 LVF 30 Optima	m/min	0	→	60	→ 79	→ 110	→ 162	0	→	30	→ 40	→ 55	→ 81	100	75	941 m
	t	6		4,5	3	1,5	12		9	6	3						
◀ ▶	6 DVF 4	m/min	0 → 50 (12 t) 0 → 100 (6 t) 0 → 120 (3 t)												5,5	4	
	RVF 152 Optima +	tr/min U/min rpm	0 → 0,8												2 x 5,5	2 x 4	
	RT 324 R ≥ 10 m	m/min	12,5 - 25												2 x 7	2 x 5,2	
	RT 443 A1 2V R ≥ 10 m	m/min	15 - 30												4 x 5	4 x 3,7	
	RT 443 A1 2V	m/min	15 - 30												4 x 5	4 x 3,7	
	RT 544 A1 2V R ≥ 13 m	m/min	13,5 - 27												4 x 7	4 x 5,2	
CEI 38		IEC 38	kVA														
400 V (+6% -10%) 50 Hz			50 LVF : 70 kVA 75 LVF : 95 kVA 100 LVF : 120 kVA												2000/14		



F	D	GB	E	I	P
Levage	Heben	Hoisting	Elevación	Sollevamento	Elevação
Distribution	Katzfahren	Trolleying	Distribución	Distribuzione	Distribuição
Orientation	Schwenken	Slewing	Orientación	Rotazione	Rotação
Translation	Kranfahren	Travelling	Traslación	Traslazione	Translação
Conforme aux directives CEE sur le niveau acoustique	Gemäss EWG-Richtlinien für den Schall-Leistungspegel	In compliance with the EEC Instructions on noise level	Conforme con las directivas CEE sobre el nivel acústico	Conforme alle direttive CEE sul livello acustico	Conforme as directivas CEE sobre o nível acústico



Document commercial non contractuel. Pour toute information technique se référer à la notice correspondante

Unverbindliches Vertriebsdokument. Für technische Informationen, siehe die entsprechenden Anweisungen.

This commercial document is not legally binding. For any technical information, please refer to the corresponding instructions.

Documento comercial no contractual. Para cualquier información técnica, ver la noticia correspondiente.

Documento commerciale non vincolante, per tutte le informazioni tecniche fare riferimento al catalogo istruzioni

Documento comercial não vinculante. Para qualquer informação técnica complementar consultar as respectivas instruções

Manitowoc
Crane CARE

POTAIN ↑
Manitowoc Crane Group



Americas
Tel: +1 920 683 6322
Tel: +1 717 997 8121

Europe - Middle East - Africa
Tel: +(33) 4 72 81 50 00
Tel: +(44) 191 565 6281

Asia - Pacific
Tel: +(65) 6861 7133
Fax: +(65) 6862 4142

www.manitowoccrane.com

18, rue de Charbonnières - B.P.173
69132 ECULLY Cedex - France

Tél. : (33) 4 72 18 20 20
Fax. : (33) 4 72 18 20 00
www.manitowoccrane.com www.potain.com

TOPKIT MD 238 A J12

Réf. 2004 45 MBT 3

Copyright.Reproduction interdite © POTAIN 2004

Réalisation Sedoc