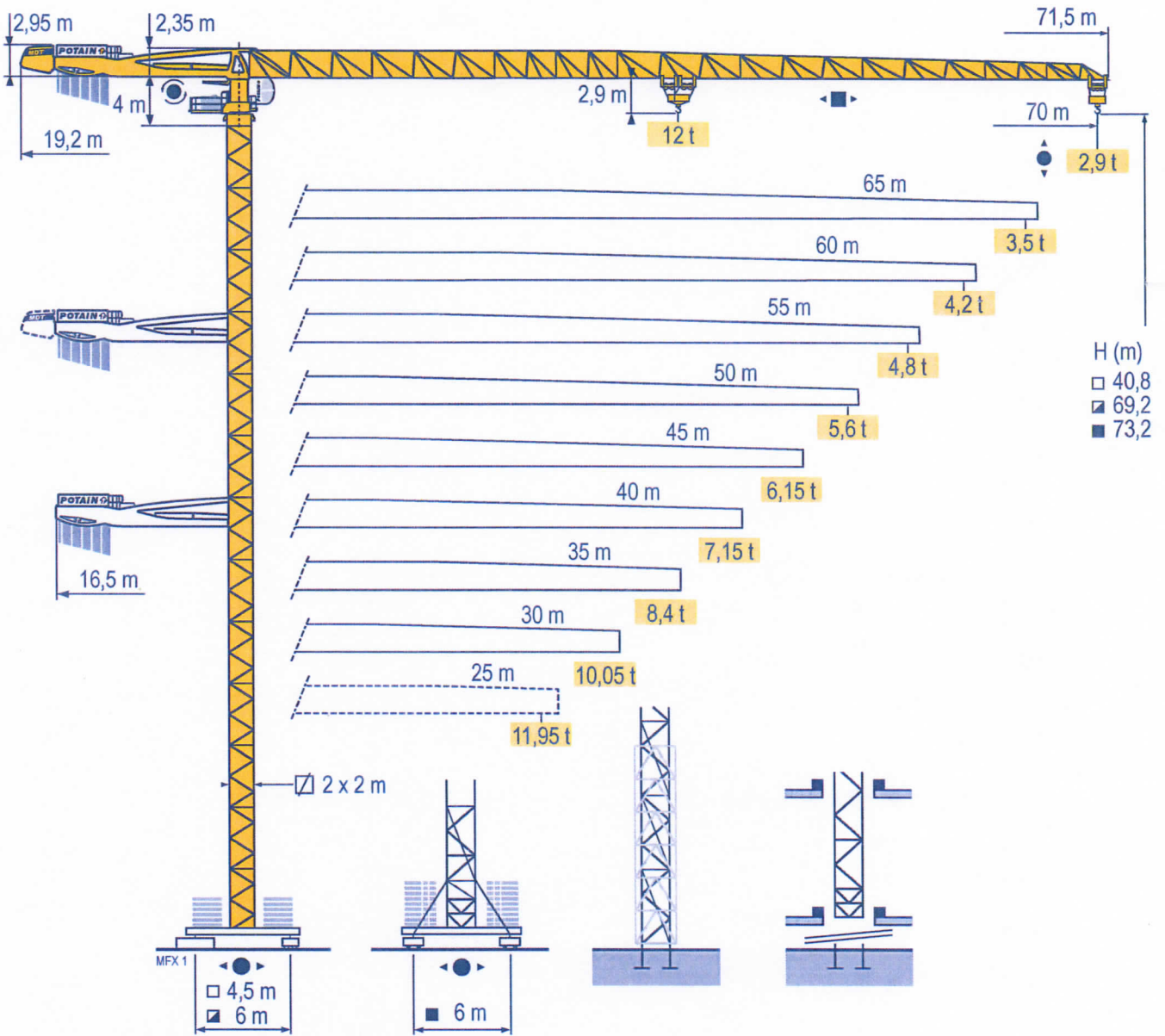


# MDT 308



## Topless

Mat / Réactions  $\square$  2 m

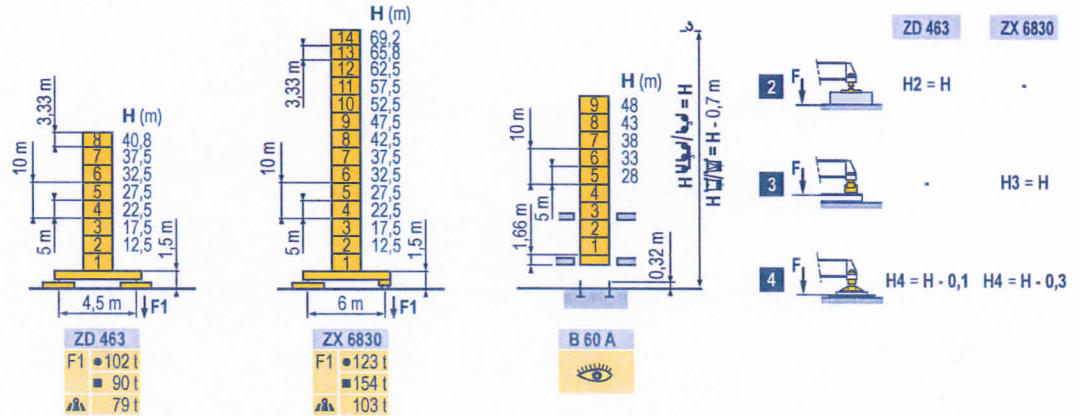
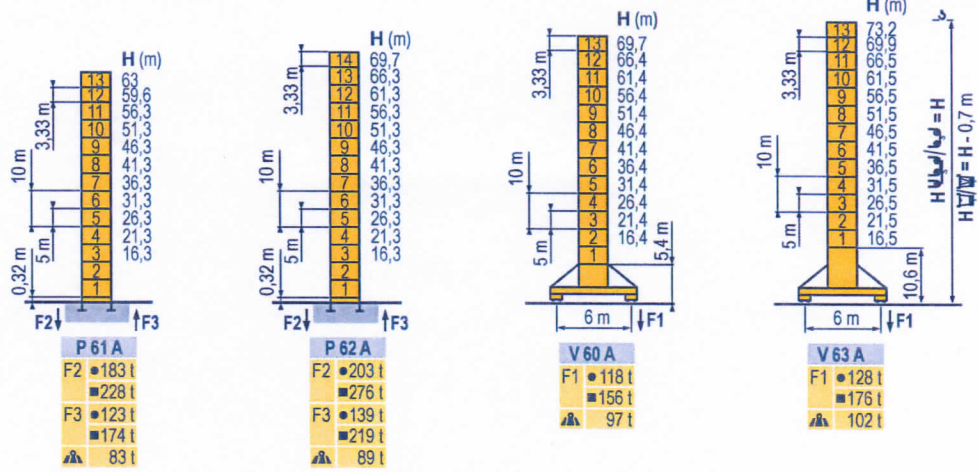
Maste /  
Eckdrücke

Masts /  
Reactions  
Mástil /  
Reacciones  
Torre / Reazioni

Tramo /  
Reacções

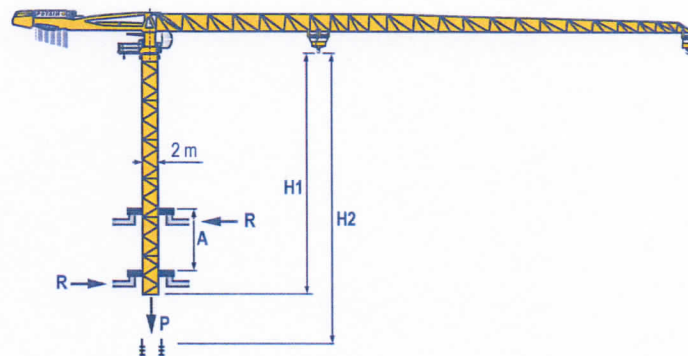
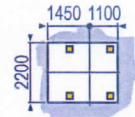
Композиции  
башни /  
Реакции

MFX 1

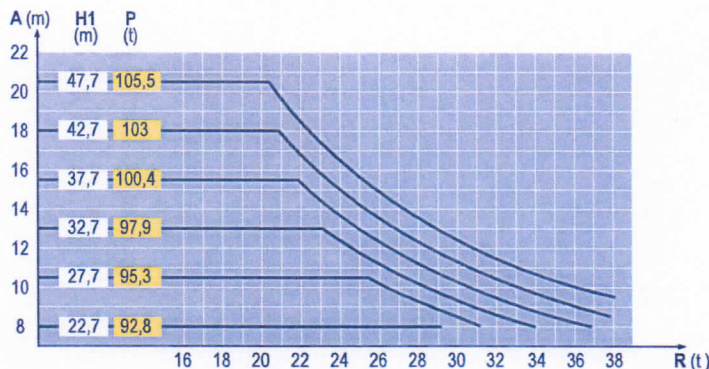


Télescopage sur dalles  
Kletterkrane im Gebäude  
Climbing crane  
Telescopage gruas trepadoras  
Gru in cavedio  
Telescopagem sobre lages  
Кран, ползущий внутри здания

MFX 1



**B 60 A**



Topless  
MDT 308

**POTAIN**

**FR**

$\bullet$  Réactions en service  
 $\blacksquare$  Réactions hors service



A vide sans lest (ni train de transport) avec flèche et hauteur maximum.



Nous consulter

**DE**

Reaktionskräfte in Betrieb  
 Reaktionskräfte außer Betrieb

Ohne Last, Ballast (und Transportachse), mit Maximalausleger und Maximalhöhe.

Auf Anfrage

**EN**

Reactions in service  
 Reactions out of service

Without load, ballast (or transport axes), with maximum jib and maximum height.

Consult us

**ES**

Reacciones en servicio  
 Reacciones fuera de servicio

Sin carga, sin lastre, (ni tren de transporte), flecha y altura máxima.

Consultarnos

**IT**

Reazioni in servizio  
 Reazioni fuori servizio

A vuoto, senza zavorra (ne assali di trasporto) con braccio massimo e altezza massima.

Consultatoci

**PT**

Reacções em serviço  
 Reacções fora de serviço

Sem carga (nem trem de transporte) sem lastro com lança e altura máximas.

Consultar-nos

**RU**

Реакции при работе  
 Реакции в покое

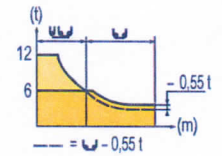
Вес без груза, балласта (или транспортных осей), с максимальной длиной стрелы и максимальной высотой.

Проконсультируйтесь у нас

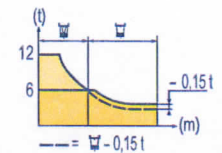
**Courbes de charges**  
**Lastkurven**  
**Load diagrams**  
**Curvas de cargas**  
**Curve di carico**  
**Curva de cargas**  
**Диаграммы грузоподъемностей**

MF3.1

|      |     |   |      |      |       |       |     |     |     |      |      |      |      |     |     |     |     |     |     |     |     |     |     |     |   |
|------|-----|---|------|------|-------|-------|-----|-----|-----|------|------|------|------|-----|-----|-----|-----|-----|-----|-----|-----|-----|-----|-----|---|
| 70 m | 3,1 | ▶ | 20   | 22   | 25    | 27    | 30  | 32  | 35  | 35,6 | 38,5 | 40   | 42   | 45  | 47  | 50  | 52  | 55  | 57  | 60  | 62  | 65  | 67  | 70  | m |
|      |     |   | 12   | 10,7 | 9,2   | 8,4   | 7,4 | 6,8 | 6,1 | 6    | 6    | 5,7  | 5,4  | 5   | 4,7 | 4,4 | 4,2 | 3,9 | 3,8 | 3,5 | 3,4 | 3,2 | 3,1 | 2,9 | t |
| 65 m | 3,1 | ▶ | 21,3 | 22   | 25    | 27    | 30  | 32  | 35  | 37   | 38,3 | 41,2 | 42   | 45  | 47  | 50  | 52  | 55  | 57  | 60  | 62  | 65  |     |     | m |
|      |     |   | 12   | 11,6 | 10    | 9,1   | 8,1 | 7,5 | 6,7 | 6,3  | 6    | 6    | 5,9  | 5,4 | 5,2 | 4,8 | 4,6 | 4,3 | 4,1 | 3,9 | 3,7 | 3,5 |     |     | t |
| 60 m | 3,1 | ▶ | 22,8 | 25   | 27    | 30    | 32  | 35  | 37  | 40   | 41   | 44,1 | 45   | 47  | 50  | 52  | 55  | 57  | 60  |     |     |     |     |     | m |
|      |     |   | 12   | 10,8 | 9,9   | 8,7   | 8,1 | 7,3 | 6,8 | 6,2  | 6    | 6    | 5,9  | 5,6 | 5,2 | 5   | 4,7 | 4,5 | 4,2 |     |     |     |     |     | t |
| 55 m | 3,1 | ▶ | 23,4 | 25   | 27    | 30    | 32  | 35  | 37  | 40   | 42   | 42,1 | 45,3 | 47  | 50  | 52  | 55  |     |     |     |     |     |     |     | m |
|      |     |   | 12   | 11,1 | 10,2  | 9     | 8,3 | 7,5 | 7   | 6,4  | 6    | 6    | 6    | 5,8 | 5,4 | 5,1 | 4,8 |     |     |     |     |     |     |     | t |
| 50 m | 3,1 | ▶ | 24,3 | 25   | 27    | 30    | 32  | 35  | 37  | 40   | 42   | 43,8 | 47,1 | 50  |     |     |     |     |     |     |     |     |     |     | m |
|      |     |   | 12   | 11,6 | 10,6  | 9,4   | 8,7 | 7,9 | 7,4 | 6,7  | 6,3  | 6    | 6    | 5,6 |     |     |     |     |     |     |     |     |     |     | t |
| 45 m | 3,1 | ▶ |      | 25,4 | 27    | 30    | 32  | 35  | 37  | 40   | 42   | 45   |      |     |     |     |     |     |     |     |     |     |     |     | m |
|      |     |   |      | 12   | 11,2  | 9,9   | 9,2 | 8,3 | 7,8 | 7,1  | 6,7  | 6,15 |      |     |     |     |     |     |     |     |     |     |     |     | t |
| 40 m | 3,1 | ▶ |      | 25,6 | 27    | 30    | 32  | 35  | 37  | 40   |      |      |      |     |     |     |     |     |     |     |     |     |     |     | m |
|      |     |   |      | 12   | 11,3  | 10    | 9,3 | 8,4 | 7,8 | 7,15 |      |      |      |     |     |     |     |     |     |     |     |     |     |     | t |
| 35 m | 3,1 | ▶ |      | 25,7 | 27    | 30    | 32  | 35  |     |      |      |      |      |     |     |     |     |     |     |     |     |     |     |     | m |
|      |     |   |      | 12   | 11,3  | 10    | 9,3 | 8,4 |     |      |      |      |      |     |     |     |     |     |     |     |     |     |     |     | t |
| 30 m | 3,1 | ▶ |      | 25,7 | 27    | 30    |     |     |     |      |      |      |      |     |     |     |     |     |     |     |     |     |     |     | m |
|      |     |   |      | 12   | 11,3  | 10,05 |     |     |     |      |      |      |      |     |     |     |     |     |     |     |     |     |     |     | t |
| 25 m | 3,1 | ▶ |      | 24,9 | 25    |       |     |     |     |      |      |      |      |     |     |     |     |     |     |     |     |     |     |     | m |
|      |     |   |      | 12   | 11,95 |       |     |     |     |      |      |      |      |     |     |     |     |     |     |     |     |     |     |     | t |



|      |     |   |      |      |      |      |     |      |     |      |      |      |      |     |     |     |     |     |     |     |     |     |      |     |   |
|------|-----|---|------|------|------|------|-----|------|-----|------|------|------|------|-----|-----|-----|-----|-----|-----|-----|-----|-----|------|-----|---|
| 70 m | 2,4 | ▶ | 20,3 | 22   | 25   | 27   | 30  | 32   | 35  | 36,4 | 37,1 | 40   | 42   | 45  | 47  | 50  | 52  | 55  | 57  | 60  | 62  | 65  | 67   | 70  | m |
|      |     |   | 12   | 11   | 9,4  | 8,6  | 7,6 | 7    | 6,3 | 6    | 6    | 5,5  | 5,2  | 4,7 | 4,5 | 4,1 | 3,9 | 3,6 | 3,5 | 3,2 | 3,1 | 2,9 | 2,75 | 2,6 | t |
| 65 m | 2,4 | ▶ | 21,6 | 22   | 25   | 27   | 30  | 32   | 35  | 37   | 38,8 | 39,6 | 40   | 42  | 45  | 47  | 50  | 52  | 55  | 57  | 60  | 62  | 65   |     | m |
|      |     |   | 12   | 11,7 | 10,1 | 9,3  | 8,2 | 7,6  | 6,8 | 6,4  | 6    | 6    | 5,9  | 5,6 | 5,1 | 4,9 | 4,5 | 4,3 | 4   | 3,8 | 3,6 | 3,4 | 3,2  |     | t |
| 60 m | 2,4 | ▶ | 22,9 | 25   | 27   | 30   | 32  | 35   | 37  | 40   | 41,4 | 42,2 | 45   | 47  | 50  | 52  | 55  | 57  | 60  |     |     |     |      |     | m |
|      |     |   | 12   | 10,8 | 9,9  | 8,8  | 8,1 | 7,3  | 6,9 | 6,2  | 6    | 6    | 5,6  | 5,3 | 4,9 | 4,7 | 4,4 | 4,2 | 3,9 |     |     |     |      |     | t |
| 55 m | 2,4 | ▶ | 23,5 | 25   | 27   | 30   | 32  | 35   | 37  | 40   | 42   | 42,5 | 43,4 | 45  | 47  | 50  | 52  | 55  |     |     |     |     |      |     | m |
|      |     |   | 12   | 11,2 | 10,2 | 9,1  | 8,4 | 7,6  | 7,1 | 6,5  | 6,1  | 6    | 6    | 5,7 | 5,5 | 5,1 | 4,8 | 4,5 |     |     |     |     |      |     | t |
| 50 m | 2,4 | ▶ | 24,4 | 25   | 27   | 30   | 32  | 35   | 37  | 40   | 42   | 44,2 | 45,1 | 47  | 50  |     |     |     |     |     |     |     |      |     | m |
|      |     |   | 12   | 11,7 | 10,7 | 9,5  | 8,8 | 7,9  | 7,4 | 6,8  | 6,4  | 6    | 6    | 5,7 | 5,3 |     |     |     |     |     |     |     |      |     | t |
| 45 m | 2,4 | ▶ |      | 25,5 | 27   | 30   | 32  | 35   | 37  | 40   | 42   | 45   |      |     |     |     |     |     |     |     |     |     |      |     | m |
|      |     |   |      | 12   | 11,2 | 10   | 9,3 | 8,3  | 7,8 | 7,1  | 6,7  | 6,2  |      |     |     |     |     |     |     |     |     |     |      |     | t |
| 40 m | 2,4 | ▶ |      | 25,7 | 27   | 30   | 32  | 35   | 37  | 40   |      |      |      |     |     |     |     |     |     |     |     |     |      |     | m |
|      |     |   |      | 12   | 11,3 | 10,1 | 9,3 | 8,4  | 7,9 | 7,2  |      |      |      |     |     |     |     |     |     |     |     |     |      |     | t |
| 35 m | 2,4 | ▶ |      | 25,8 | 27   | 30   | 32  | 35   |     |      |      |      |      |     |     |     |     |     |     |     |     |     |      |     | m |
|      |     |   |      | 12   | 11,4 | 10,1 | 9,4 | 8,45 |     |      |      |      |      |     |     |     |     |     |     |     |     |     |      |     | t |
| 30 m | 2,4 | ▶ |      | 25,8 | 27   | 30   |     |      |     |      |      |      |      |     |     |     |     |     |     |     |     |     |      |     | m |
|      |     |   |      | 12   | 11,4 | 10,1 |     |      |     |      |      |      |      |     |     |     |     |     |     |     |     |     |      |     | t |
| 25 m | 2,4 | ▶ |      | 25   |      |      |     |      |     |      |      |      |      |     |     |     |     |     |     |     |     |     |      |     | m |
|      |     |   |      | 12   |      |      |     |      |     |      |      |      |      |     |     |     |     |     |     |     |     |     |      |     | t |



**Lest de contre-flèche**  
**Gegenauslegerballast**  
**Counter-jib ballast**  
**Lastre de contra flecha**  
**Contrappeso**  
**Lastros da contra lança**  
**Балласт на консоли**

MF3.1

|      |  |                                |             |
|------|--|--------------------------------|-------------|
|      |  | 4 600 kg - 3 070 kg - 1 530 kg |             |
| 70 m |  |                                | 26 090 (kg) |
| 65 m |  |                                | 26 090      |
| 60 m |  | 19,2 m                         | 26 090      |
| 55 m |  |                                | 23 020      |
| 50 m |  |                                | 23 020      |
| 45 m |  |                                | 21 490      |
| 40 m |  |                                | 19 950      |
| 35 m |  |                                | 18 420      |
| 30 m |  | 16,5 m                         | 16 880      |
| 25 m |  |                                | 15 350      |

**Lest de base**  
**Grundballast**  
**Base ballast**  
**Lastre de base**  
**Zavorra di base**  
**Lastros da base**  
**Базовый балласт**

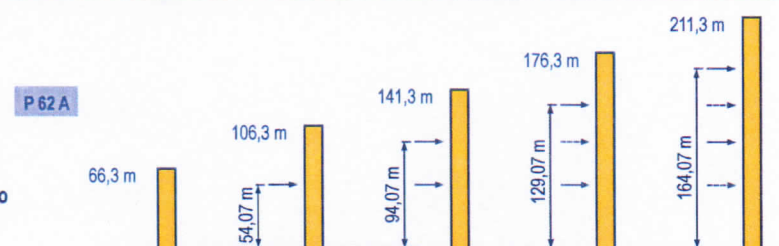
MF3.1

|       |         |   |       |      |      |      |      |      |      |      |      |      |      |      |      |      |
|-------|---------|---|-------|------|------|------|------|------|------|------|------|------|------|------|------|------|
| □ 2 m | V 60 A  | • | H (m) | 69,7 | 66,4 | 61,4 | 56,4 | 51,4 | 46,4 | 41,4 | 36,4 | 31,4 | 26,4 | 21,4 | 16,4 |      |
|       |         |   | ▲ (t) | 132  | 108  | 84   | 72   | 72   | 72   | 72   | 72   | 72   | 72   | 72   | 72   |      |
| □ 2 m | V 63 A  | • | H (m) | 73,2 | 69,9 | 66,5 | 61,5 | 56,5 | 51,5 | 46,5 | 41,5 | 36,5 | 31,5 | 26,5 | 21,5 | 16,5 |
|       |         |   | ▲ (t) | 156  | 132  | 120  | 84   | 72   | 60   | 60   | 60   | 60   | 60   | 60   | 60   |      |
| □ 2 m | ZD 463  | • | H (m) | 40,8 | 37,4 | 32,4 | 27,5 | 22,5 | 17,5 | 12,5 |      |      |      |      |      |      |
|       |         |   | ▲ (t) | 120  | 120  | 120  | 120  | 120  | 120  | 120  |      |      |      |      |      |      |
| □ 2 m | ZX 6830 | • | H (m) | 69,2 | 65,8 | 62,5 | 57,5 | 52,5 | 47,5 | 42,5 | 37,5 | 32,5 | 27,5 | 22,5 | 17,5 | 12,5 |
|       |         |   | ▲ (t) | 121  | 101  | 81   | 71   | 61   | 61   | 61   | 61   | 61   | 61   | 61   | 61   | 61   |

**Ancrages**  
**Verankerungen**  
**Anchorage**  
**Anclaje**  
**Ancoraggio**  
**Ancoragem**  
**Рамки для крепления к зданию**

MF3.1









**Topless**  
**MDT 308**

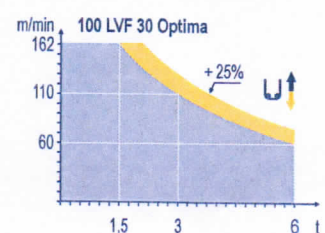
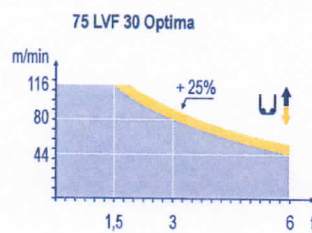
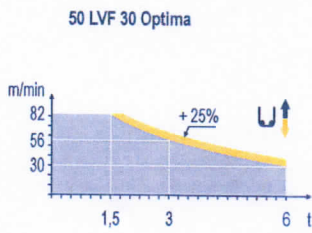






|           |                              |                               |                           |                               |                              |                              |                                    |
|-----------|------------------------------|-------------------------------|---------------------------|-------------------------------|------------------------------|------------------------------|------------------------------------|
|           | <b>FR</b>                    | <b>DE</b>                     | <b>EN</b>                 | <b>ES</b>                     | <b>IT</b>                    | <b>PT</b>                    | <b>RU</b>                          |
| <b>A</b>  | Distance entre cadres        | Abstand zwischen den Rahmen   | Distance between collars  | Distancia entra marcos        | Distanza fra i telai         | Distância entre quadros      | Расстояние между рамками крепления |
| <b>H1</b> | Hauteur grue                 | Kranhöhe                      | Crane height              | Altura grúa                   | Altezza gru                  | Altura da grua               | Высота крана                       |
| <b>P</b>  | Poids de la grue(en service) | Krangewicht (in Betrieb)      | Crane weight (in service) | Peso de la grúa (en servicio) | Peso della gru (in servizio) | Peso da grua (em serviço)    | Вес крана (при работе)             |
| <b>R</b>  | Réaction horizontale         | Horizontalkräfte              | Horizontal reaction       | Reaccion horizontal           | Reazione orizzontale         | Reacção horizontal           | Горизонтальные реакции             |
|           | Voir télescope sur dalles    | Siehe Kletterkrane im Gebäude | See climbing crane        | Veja grua trepadora           | Consultare gru in cavedito   | Ver telescopagem sobre lajes | См. кран, ползущий внутри здания   |

Mécanismes  
Antriebe  
Mechanisms  
Mecanismos  
Meccanismi  
Mecanismos  
Механизмы

MFX 1

|   |   | U  |   |  |  |  |  | UU   |                             |  |  |     |  | ch - PS<br>hp | kW      |  |       |  |  |  |
|---|---|--|---|--|--|--|--|--|-----------------------------|--|--|-----|--|---------------|---------|---|-------|--|--|--|
| ▲<br>▼  | 50 LVF 30 Optima                        | m/min  | 2,6 → 10 → 30 → 40 → 56 → 82  |  |  |  |  |  | 1,3 → 5 → 15 → 20 → 28 → 41 |  |  |     |  |               | 50      | 37  | 337 m |  |  |  |
|   | t                                       | 6 6 6 4,5 3 1,5  |   |  |  |  |  | 12 12 12 9 6 3   |                             |  |  |     |  |               |         |   |       |  |  |  |
| ▲<br>▼  | 75 LVF 30 Optima                        | m/min  | 3,8 → 44 → 56 → 80 → 116  |  |  |  |  |  | 1,9 → 22 → 28 → 40 → 58     |  |  |     |  |               | 75      | 55  | 766 m |  |  |  |
|   | t                                       | 6 4,5 3 1,5  |   |  |  |  |  | 12 9 6 3   |                             |  |  |     |  |               |         |   |       |  |  |  |
| ▲<br>▼  | 100 LVF 30 Optima                       | m/min  | 0 → 60 → 80 → 110 → 162   |  |  |  |  |  | 0 → 30 → 40 → 55 → 81       |  |  |     |  |               | 100     | 75  | 941 m |  |  |  |
|   | t                                       | 6 4,5 3 1,5  |   |  |  |  |  | 12 9 6 3   |                             |  |  |     |  |               |         |   |       |  |  |  |
|  | RVF 162 Optima +                        | tr/min<br>U/min - rpm  | 0 → 0,8   |  |  |  |  |  |                             |  |  |     |  |               | 2 x 7,5 | 2 x 5,5   |       |  |  |  |
|  | 6 DVF 4                                 | m/min  | 0 → 50 (12 t) - 0 → 100 (6 t) - 0 → 120 (3 t)                                     |  |  |  |  |  |                             |  |  |     |  |               | 5,5     | 4   |       |  |  |  |
|  | V 60 A<br>RT 544<br>A1 - 2V<br>R ≥ 13 m | m/min  | 13,5 - 27   |  |  |  |  |  |                             |  |  |     |  |               | 4 x 7   | 4 x 5,2   |       |  |  |  |
|  | V 63 A                                  |  |  |  |  |  |  |  |                             |  |  |     |  |               |         |   |       |  |  |  |
|  | ZX 6830<br>RT 664<br>A2B - 2V           | m/min  | 16 - 32   |  |  |  |  |  |                             |  |  |     |  |               | 6 x 7   | 6 x 5,2   |       |  |  |  |
|   |   | CEI 38  | IEC 38  |  |  |  |  |  |                             |  |  | kVA |  |               |         |   |       |  |  |  |
|   |   | 400 V (+6% -10%)   |   |  |  |  |  | 50 LVF : 75 kVA - 75 LVF : 100 kVA - 100 LVF : 125 kVA |                             |  |  |     |  |               |         |   |       |  |  |  |



|  | FR           | DE         | EN         | ES           | IT            | PT           | RU                  |
|--|--------------|------------|------------|--------------|---------------|--------------|---------------------|
|  | Levage       | Heben      | Hoisting   | Elevación    | Sollevamento  | Elevação     | Подъём              |
|  | Distribution | Katzfahren | Trolleying | Distribución | Distribuzione | Distribuição | Перемещение каретки |
|  | Orientation  | Schwenken  | Slewing    | Orientación  | Rotazione     | Rotação      | Поворот             |
|  | Translation  | Kranfahren | Travelling | Traslación   | Traslazione   | Translação   | Перемещение крана   |



Document commercial non contractuel. Pour toute information technique se référer à la notice correspondante.

Unverbindliches Vertriebsdokument. Für technische Informationen, siehe die entsprechenden Anweisungen.

This commercial document is not legally binding. For any technical information, please refer to the corresponding instructions.

Documento comercial no contractual. Para cualquier información técnica, ver la noticia correspondiente.

Documento commerciale non vincolante. Per tutte le informazioni tecniche fare riferimento al catalogo istruzioni.

Documento comercial não contractual. Para qualquer informação técnica complementar consultar as respectivas instruções.

Этот коммерческий документ не является юридически обязательным. Для получения технической информации, см. соответствующие инструкции.

**Manitowoc**

**Manitowoc**  
Crane Care

**POTAIN** 



Americas

Tel : +1 888 479 7278  
Tel : +1 717 593 2000

Europe - Middle East - Africa

Tel : +33 (0) 4 72 81 50 00  
Tel : +44 (0) 191 522 2000

Asia - Pacific

Tel : +65 6264 1188  
Fax : +65 6862 4040

www.manitowoccranes.com

18, rue de Charbonnières - B.P.173  
69132 ECULLY Cedex - France

Tél. : +33 (0) 4 72 18 20 20  
Fax. : +33 (0) 4 72 18 20 00  
www.manitowoccranes.com

**Topless MDT 308**

Réf. 2008 20 MFX 1

Copyright.Reproduction interdite © POTAIN 2008

Réalisation Sedoc