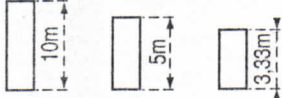


TOPKIT MD 115 DIN

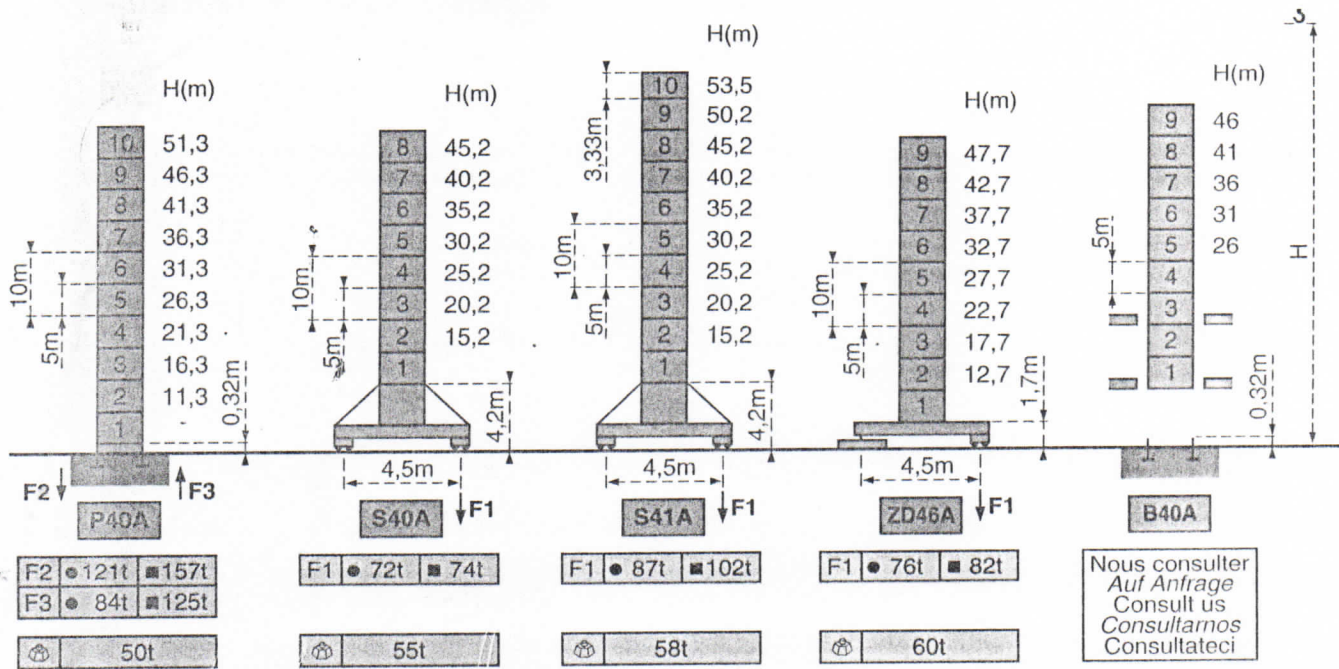
POTAIN  [®]

Mats - Maste - Masts - Mástil - Torre

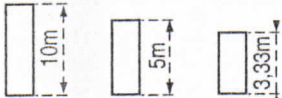


1,6m
MD 115 G8 - MD 115 G10
DIN

Flèche - Ausleger - Jib
Flecha - Braccio
25m → 55m

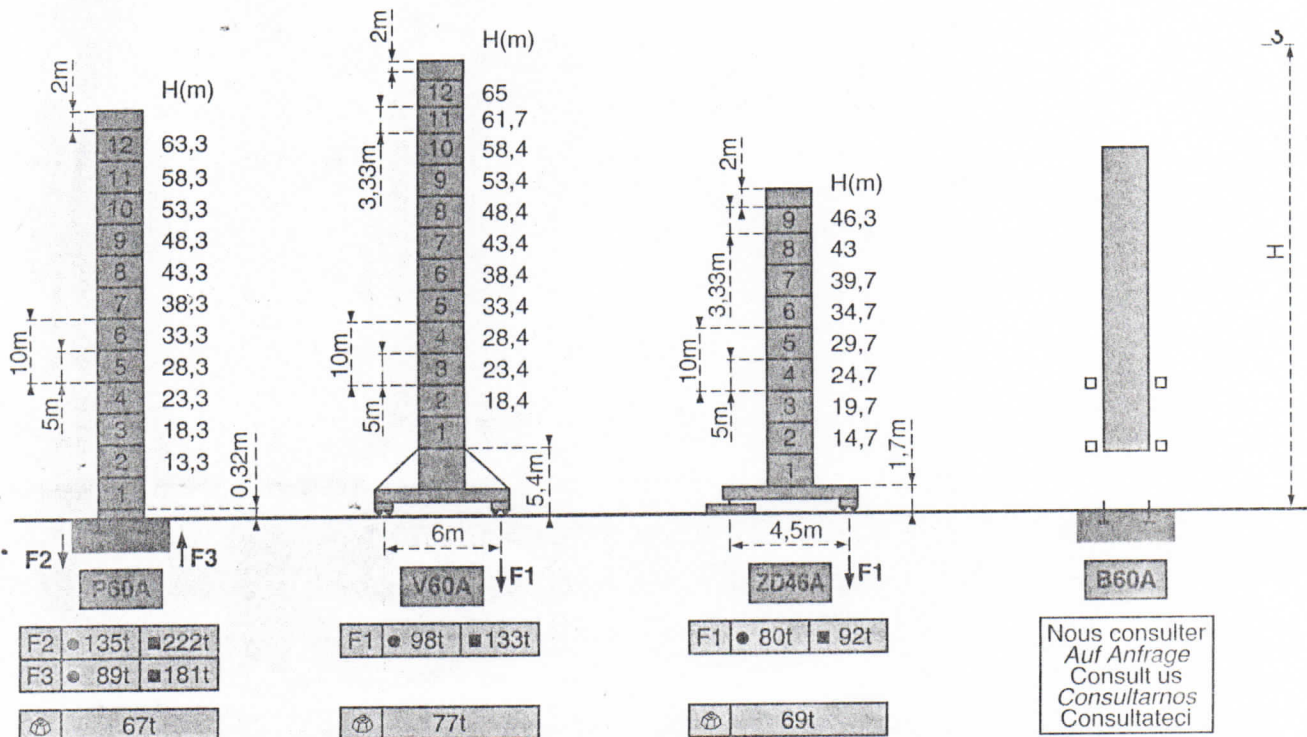


Mats - Maste - Masts - Mástil - Torre



2 m
MD 115 G8 - MD 115 G10
DIN

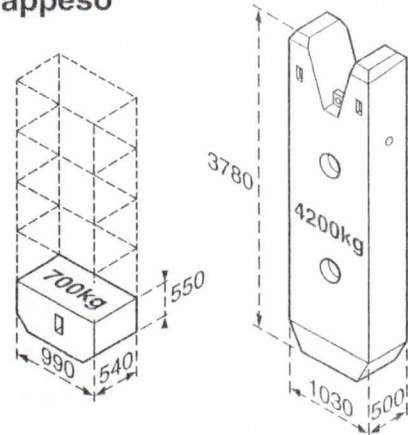
Flèche - Ausleger - Jib
Flecha - Braccio
25m → 55m



F = Réactions - Eckdrücke - Reactions - Reacciones - Reazioni

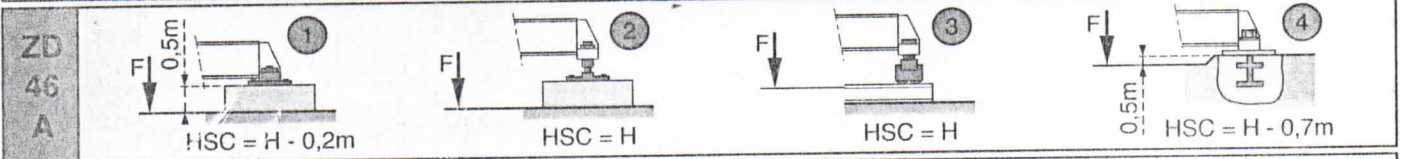
Lest de contre-flèche - Gegenauslegerballast - Counter-jib ballast
Lastre de contra flecha - Contrappeso

			(kg)
①	55m	14,5m	13 300 = (3x4200)+(1x700)
	50m	12m	16 100 = (3x4200)+(5x700)
	45m	12m	14 700 = (3x4200)+(3x700)
	40m	12m	12 600 = (3x4200)
②	35m	12m	10 500 = (2x4200)+(3x700)
	30m	12m	9 100 = (2x4200)+(1x700)
	25m	12m	7000 = (1x4200)+(4x700)



Lest de base - Grundballast - Base ballast - Lastre de base - Zavorra di base

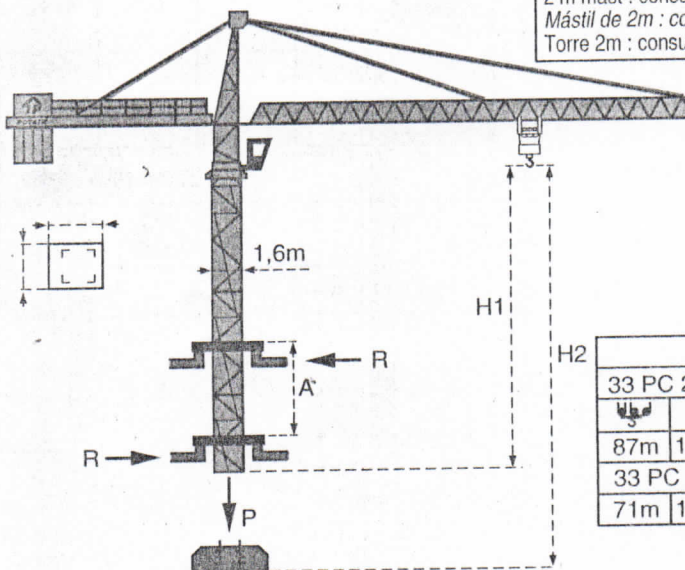
H(m)	①	②	H(m)	①	②	H(m)	①	②	H(m)	①	②	H(m)	①	②
									.65	132t	132t			
									61,7	120t	120t			
			53,5	108t	114t				58,4	96t	96t			
			50,2	96t	102t	47,7	85t	90t	53,4	72t	84t	46,3	85t	90t
45,2	78t	84t	45,2	78t	84t	42,7	70t	75t	48,4	60t	60t	43	75t	80t
40,2	66t	72t	40,2	66t	72t	37,7	55t	60t	43,4	48t	48t	39,7	65t	70t
35,2	54t	60t	35,2	54t	60t	32,7	45t	50t	38,4	36t	36t	34,7	50t	55t
30,2	42t	48t	30,2	42t	48t	27,7	40t	40t	33,4	24t	24t	29,7	40t	40t
25,2	42t	42t	25,2	42t	42t	22,7	40t	40t	28,4	12t	12t	24,7	40t	40t
20,2	42t	42t	20,2	42t	42t	17,7	40t	40t	23,4	12t	12t	19,7	40t	40t
15,2	42t	42t	15,2	42t	42t	12,7	40t	40t	18,4	12t	12t	14,7	40t	40t
S 40 A			S 41 A			ZD 46 A			V 60 A			ZD 46 A		
			□ 1,6m									□ 2m		



Télescopage sur dalles - Kletterkrane im Gebäude - Climbing crane
Telescopage gruas trepadoras - Gru in cavedio

Mât de 2m : nous consulter
 Mast von 2m : Auf Anfrage
 2 m mast : consult us
 Mástil de 2m : consultarnos
 Torre 2m : consultateci

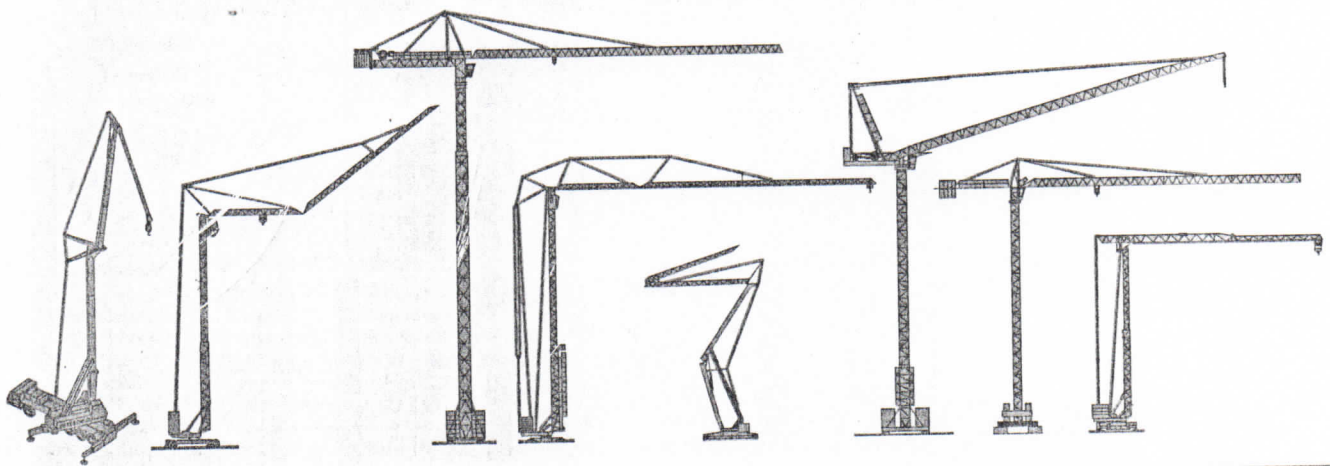
B 40 A



H2			
33 PC 20 D		55 RCS 20 D	
87m	174m	141m	283m
33 PC 25D		55 RCS 25D	
71m	142m	140m	280m

Nous consulter
 Auf Anfrage
 Consult us
 Consultarnos
 Consultateci

- | | | | | |
|---------------------------------|-------------------------------|-----------------------------|---------------------------------|--------------------------------|
| A Distance entre cadres | A Abstand zwischen den Rahmen | A Distance between collars | A Distancia entra marcos | A Distanza tra telai |
| H1 Hauteur grue | H1 Kranhöhe | H1 Crane height | H1 Altura grúa | H1 Altezza gru |
| P Poids de la grue (en service) | P Krangewicht (in Betrieb) | P Crane weight (in service) | P Peso de la grúa (en servicio) | P Peso della gru (en servizio) |
| R Réaction horizontale | R Horizontalkräfte | R Horizontal reaction | R Reaccion horizontal | R Reazione orizzontale |



Document pour usage commercial uniquement - Benutzung dieser Unterlagen nur für Verkaufszwecke - Document for commercial use only -
 Documento para uso comercial unicamente - Documento per uso commerciale solamente

Copyright. Reproduction interdite © POTAIN 1992

POTAIN 

GRUPE LEGRIS INDUSTRIES

18, Rue de Charbonnières, B.P. 173-F 69132 ECULLY Cedex
 Tél. 72.20.20.20 - Télex 330 179 - Fax 72.20.20.00

POTAIN GmbH	Deutschland	Tel : 6.105.704.0
POTAIN U.K.	Great Britain	Tel : 895.44.52.61
Simma POTAIN	Italia	Tel : 2.97.96.71
POTAIN Portugal	Portugal	Tel : 2.968.08.89

TOPKIT MD 115 DIN

Réf. 1992.06 LEP 1

Modifications réservées / Änderungen vorbehalten / Subject to modification / Modificaciones reservadas / Modifiche riservate
 Made in France

Réalisation SODIPE